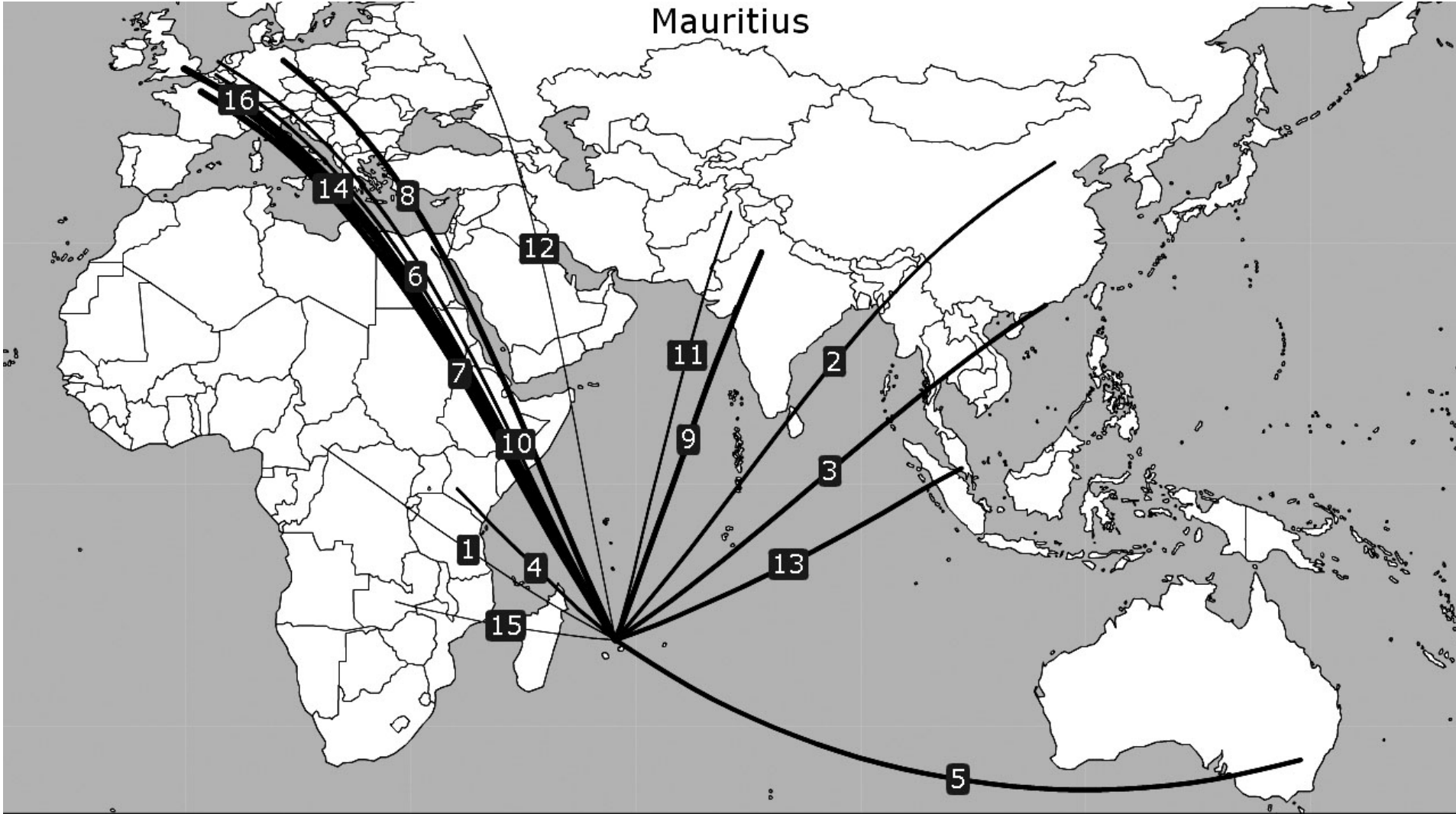


# MAURITIUS

MAURITIUS

Mauritius



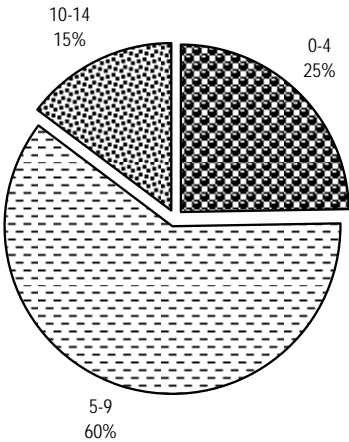
# MAURITIUS

**Table 1**  
Selected indicators

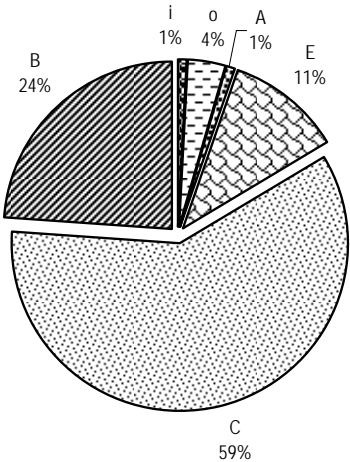
STATISTICAL DATA						POLICY DATA			
General (2004)		Trade (2004)		Air transport (2004)		Trade (2006)		Air Transport (2005)	
Population (million)	1.23	Total trade (million US\$)	7,038	WASA traffic (passengers) (2005)	948,016	Final bound MFN tariffs (%)	93.8	Traffic weighted average ALI (Standard)	6.2
Share in world population (%)	0.02	Share in world trade (%)	0.03	Share of total WASA traffic (%) (2005)	0.14	Services sectors committed (out of ~160)	27	Traffic weighted average ALI (5th+)	10.2
GDP (million current US\$)	6,034	Trade per capita (US\$)	5,702	Number of planes (of which, in parenthesis, jets) (2005)	13 (10)	Tourism and travel-related services sectors committed (out of 3)	3	Traffic weighted average ALI (OWN+)	5.5
Share in world GDP (%)	0.01	Trade to GDP ratio (%)	116.6	Number of international airports (2005)	2	Services auxiliary to all modes of transport committed (out of 4)	0	Traffic weighted average ALI (DES+)	7.1
GDP per capita (current US\$)	4,889	Commercial services trade (million US\$)	2,455	Domestic traffic (passengers) (2005)	82,127	Air transport services sectors committed (out of 4)	0	Dispersion of ALI (standard)	0-12
Size (km²)	2,030	Share in world commercial services trade (%)	0.06	Air transport services (million US\$)	...	MFN exemptions on air transport services	0	National ownership regime (2004)	...
Density (pop. by km²)	608	Travel services (million US\$)	1,111	Passenger air transport services (million US\$)	...	Number of bilateral FTAs	0	Number of bilateral ASAs recorded by ICAO	16
				Freight air transport services (million US\$)	...	Number of regional FTAs	2	Number of plurilateral ASAs recorded by ICAO (2006)	2

MAURITIUS

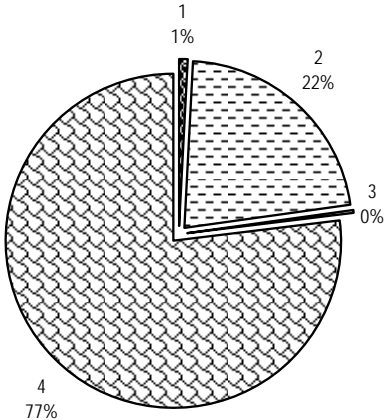
**Chart 1**  
Share of traffic by ALI range  
(percentage, 2005)



**Chart 2**  
Share of traffic by type  
(percentage, 2005)



**Chart 3**  
Share of traffic by region of partner  
(percentage, 2005)

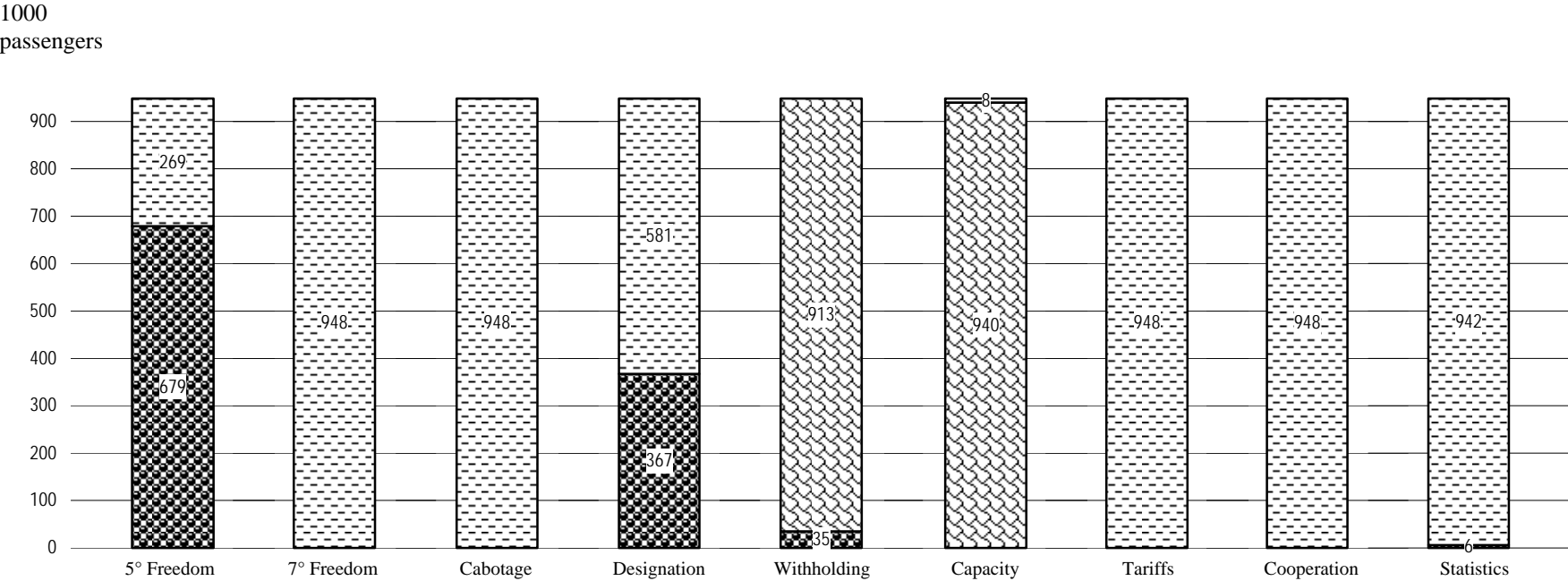


1 Africa; 2 Asia and Oceania;  
3 Commonwealth of Independent States;  
4 Europe; 5 Middle East; 6 North America;  
7 South and Central America and the Caribbean

MAURITIUS

Chart 4

Distribution of traffic by feature of bilateral Air Services Agreements (thousand passengers, 2005)



5° Freedom, 7° Freedom, Cabotage,  
Designation, Cooperation, Statistics

- With
- Without

Withholding

- Principal Place of Business
- Community of Interest
- Substantial Ownership and Effective Control
- Undetermined

Capacity

- Free Determination
- Bermuda I
- Pre-Determination
- Undetermined

Tariffs

- Free Pricing
- Zone Pricing
- Double Disapproval
- Country of Origin
- Double Approval
- Undetermined

## MAURITIUS

**Table 2**  
Bilateral Air Services Agreements recorded by ICAO, selected indicators (2005)

Party	Date	Direct Services	ALI Standard	ALI 5th+	ALI OWN+	ALI DES+	Type	Distance (km)	Traffic Range (passengers)
FRANCE	22/11/1979	Yes	6	12.0	5.0	5.5	C	9423	1-500000
UNITED KINGDOM	12/07/1973	Yes	4	3.5	3.5	7.5	B	9744	1-500000
INDIA	28/01/1972	Yes	6	12.0	5.0	5.5	C	5828	1-500000
GERMANY	26/02/1974	Yes	10	15.5	8.5	13.0	E	9364	1-500000
SWITZERLAND	14/11/1979	Yes	6	12.0	5.0	5.5	C	8996	1-500000
HONG KONG, CHINA	03/07/1998	Yes	12	10.5	17.5	15.0	o	7758	1-500000
AUSTRALIA	31/03/1995	Yes	6	12.0	5.0	5.5	C	9106	1-500000
SINGAPORE	24/02/1984	Yes	6	12.0	5.0	5.5	C	5588	1-500000
BELGIUM	26/04/1993	No	6	12.0	5.0	5.5	C	9453	1-500000
KENYA	05/03/1979	Yes	6	12.0	5.0	5.5	C	3078	1-500000
NETHERLANDS	15/11/1973	No	8	13.5	6.5	7.0	i	9536	1-500000
CHINA	23/05/1995	No	1	1.0	1.0	1.0	A	9055	1-500000
PAKISTAN	15/11/1979	No	6	12.0	5.0	5.5	C	6217	1-500000
RUSSIAN FEDERATION	23/11/1973	No	0	0.0	0.0	0.0	A	8654	1-500000
ZAMBIA	16/06/1993	No	6	12.0	5.0	5.5	C	3137	1-500000
CENTRAL AFRICAN REPUBLIC	13/05/1973	No	6	12.0	5.0	5.5	C	5052	<1

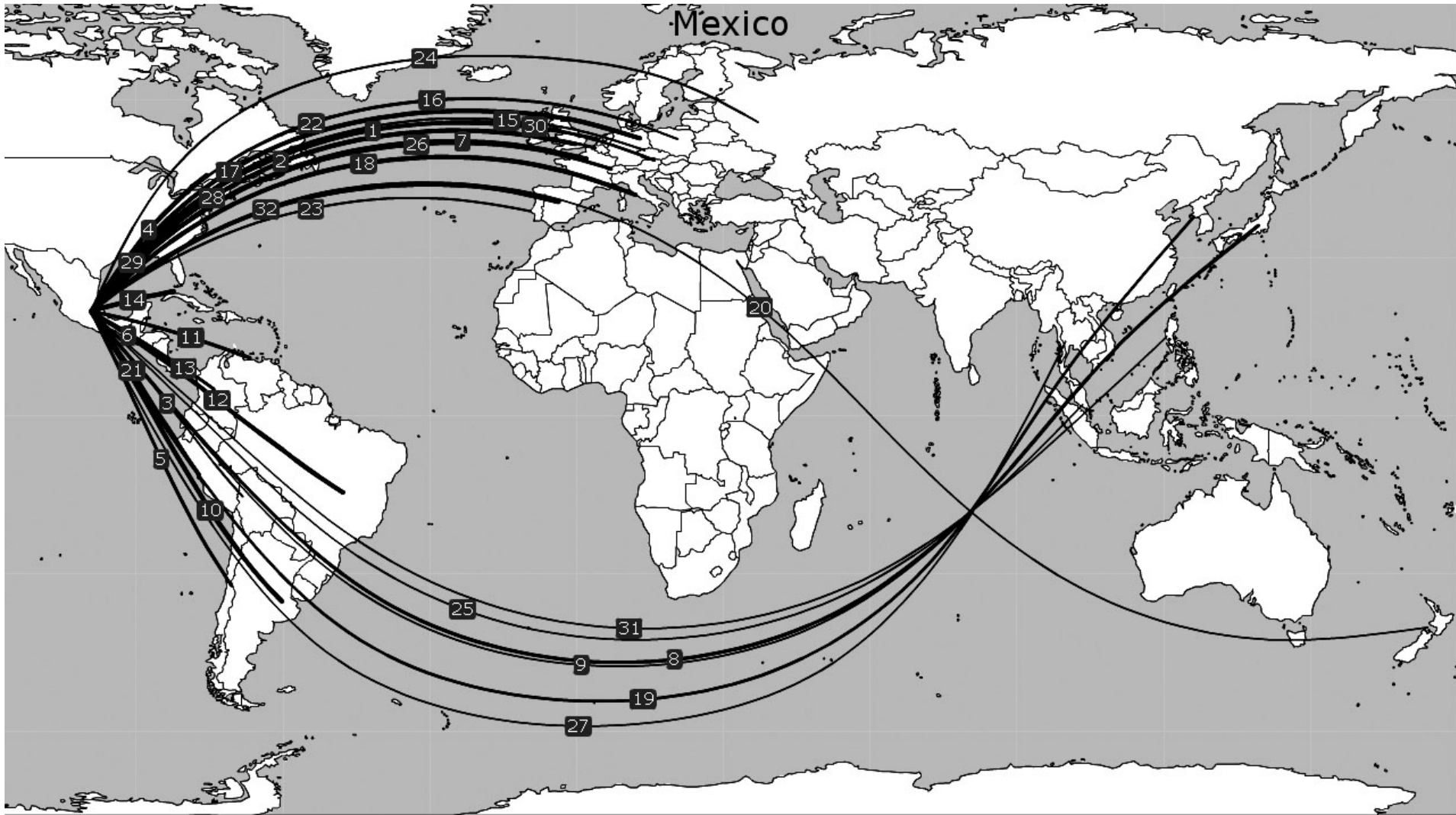
**Table 3**  
Direct air transportation services (passengers) not covered by a bilateral Air Services Agreement as recorded by ICAO (2005)

Countries or Territories	Traffic range
Reunion	1-500000
South Africa	1-500000
Italy	1-500000
Madagascar	1-500000
United Arab Emirates	1-500000

Countries or Territories	Traffic range
Seychelles	1-500000
Austria	1-500000
Malaysia	1-500000
Zimbabwe	1-500000

# MEXICO

# MEXICO





# MEXICO

**Table 1**  
Selected indicators

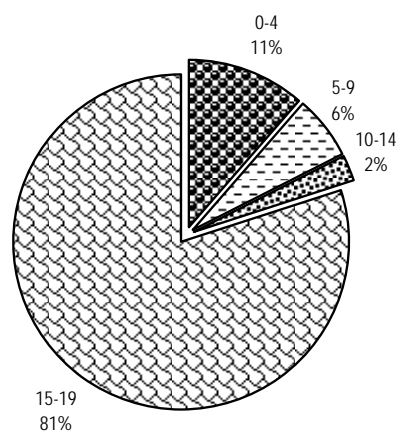
STATISTICAL DATA						POLICY DATA			
General (2004)		Trade (2004)		Air transport (2004)		Trade (2006)		Air Transport (2005)	
Population (million)	103.80	Total trade (million US\$)	417,989	WASA traffic (passengers) (2005)	20,066,653	Final bound MFN tariffs (%)	34.9	Traffic weighted average ALI (Standard)	14.6
Share in world population (%)	1.63	Share in world trade (%)	1.87	Share of total WASA traffic (%) (2005)	2.88	Services sectors committed (out of ~160)	77	Traffic weighted average ALI (5th+)	18.5
GDP (million current US\$)	676,497	Trade per capita (US\$)	4,027	Number of planes (of which, in parenthesis, jets) (2005)	506 (444)	Tourism and travel-related services sectors committed (out of 3)	3	Traffic weighted average ALI (OWN+)	12.4
Share in world GDP (%)	1.64	Trade to GDP ratio (%)	61.8	Number of international airports (2005)	39	Services auxiliary to all modes of transport committed (out of 4)	1	Traffic weighted average ALI (DES+)	16.3
GDP per capita (current US\$)	6,518	Commercial services trade (million US\$)	33,181	Domestic traffic (passengers) (2005)	14,952,544	Air transport services sectors committed (out of 4)	Other <sup>1</sup>	Dispersion of ALI (standard)	0-18
Size (km <sup>2</sup> )	1,908,690	Share in world commercial services trade (%)	0.77	Air transport services (million US\$)	3,383	MFN exemptions on air transport services	0	National ownership regime (2004)	SOEC
Density (pop. by km <sup>2</sup> )	54	Travel services (million US\$)	17,712	Passenger air transport services (million US\$)	1,888	Number of bilateral FTAs	12	Number of bilateral ASAs recorded by ICAO	32
				Freight air transport services (million US\$)	...	Number of regional FTAs	5	Number of plurilateral ASAs recorded by ICAO (2006)	1

<sup>1</sup> Airport and helicopter administration services (CPC 746); Supporting services for air transport (CPC 746).

## MEXICO

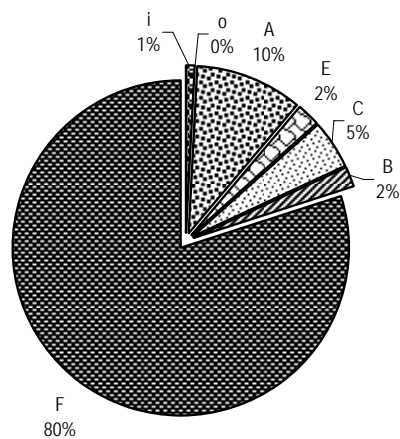
**Chart 1**

Share of traffic by ALI range  
(percentage, 2005)



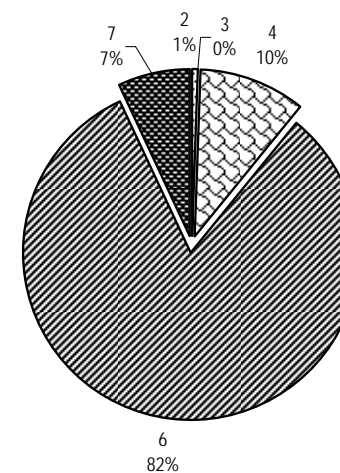
**Chart 2**

Share of traffic by type  
(percentage, 2005)



**Chart 3**

Share of traffic by region of partner  
(percentage, 2005)

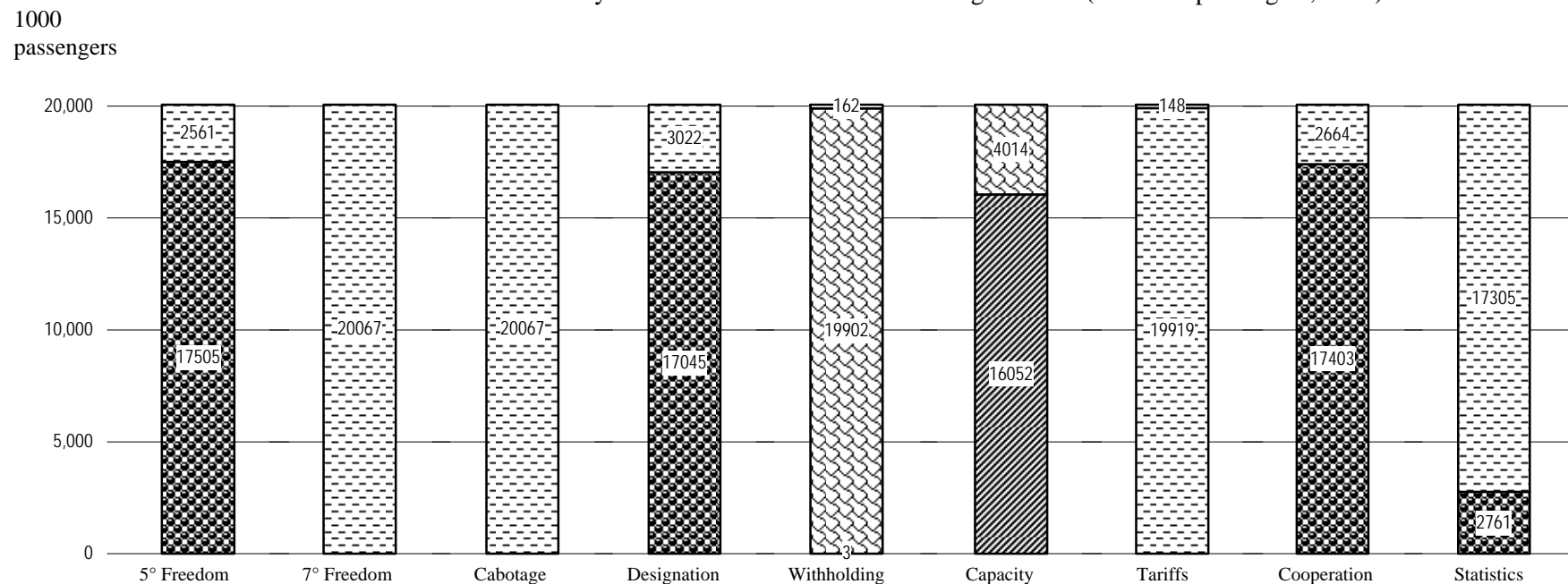


1 Africa; 2 Asia and Oceania;  
3 Commonwealth of Independent States;  
4 Europe; 5 Middle East; 6 North America;  
7 South and Central America and the Caribbean

# MEXICO

**Chart 4**

Distribution of traffic by feature of bilateral Air Services Agreements (thousand passengers, 2005)



**5° Freedom, 7° Freedom, Cabotage, Designation, Cooperation, Statistics**

With  
Without

**Withholding**

Principal Place of Business  
Community of Interest  
Substantial Ownership and Effective Control  
Undetermined

**Capacity**

Free Determination  
Bermuda I  
Pre-Determination  
Undetermined

**Tariffs**

Free Pricing  
Zone Pricing  
Double Disapproval  
Country of Origin  
Double Approval  
Undetermined

## MEXICO

**Table 2**  
Bilateral Air Services Agreements recorded by ICAO, selected indicators (2005)

Party	Date	Direct Services	ALI Standard	ALI 5th+	ALI OWN+	ALI DES+	Type	Distance (km)	Traffic Range (passengers)
UNITED STATES	15/08/1960	Yes	17	21.5	14.5	19.0	F	3369	15500001-16000000
CANADA	21/12/1961	Yes	4	3.5	3.5	3.5	A	3267	500001-1000000
SPAIN	21/11/1978	Yes	0	0.0	0.0	0.0	A	9074	500001-1000000
FRANCE	18/05/1993	Yes	10	15.5	8.5	13.0	E	9207	1-500000
GERMANY	08/03/1967	Yes	7	13.0	6.0	6.5	C	9400	1-500000
BRAZIL	17/10/1966	Yes	7	13.0	6.0	6.5	C	7440	1-500000
ITALY	23/12/1965	Yes	4	3.5	3.5	3.5	A	10255	1-500000
CUBA	09/08/1991	Yes	4	3.5	3.5	7.5	B	1784	1-500000
ARGENTINA	14/05/1969	Yes	1	1.0	1.0	1.0	A	7398	1-500000
UNITED KINGDOM	18/11/1988	Yes	18	22.5	15.5	20.0	F	8938	1-500000
COLOMBIA	09/09/1975	Yes	8	7.0	7.0	11.0	i	3089	1-500000
COSTA RICA	29/01/1991	Yes	6	12.0	5.0	5.5	C	1933	1-500000
CHILE	14/01/1997	Yes	17	21.5	14.5	19.0	F	6621	1-500000
NETHERLANDS	06/12/1971	Yes	7	13.0	6.0	6.5	C	9229	1-500000
BOLIVARIAN REP. OF VENEZUELA	30/07/1987	Yes	1	1.0	1.0	1.0	A	3595	1-500000
PERU	05/09/1989	Yes	0	0.0	0.0	0.0	A	4264	1-500000
JAPAN	10/03/1972	Yes	8	7.0	7.0	11.0	B	11312	1-500000
SWITZERLAND	02/06/1966	No	7	13.0	6.0	6.5	C	9640	1-500000
AUSTRIA	27/03/1995	Yes	5	4.5	4.5	8.5	B	10164	1-500000
DENMARK	04/02/1970	No	1	1.0	1.0	1.0	A	9523	1-500000
BELGIUM	23/04/1999	No	13	18.0	11.0	15.5	E	9259	1-500000
KOREA, REPUBLIC OF	21/07/1988	No	13	18.0	11.0	15.5	E	12066	1-500000
POLAND	11/10/1990	No	6	12.0	5.0	5.5	C	10191	1-500000
PORTUGAL	22/10/1948	No	11	16.5	9.5	14.0	E	8684	1-500000
BOLIVIA	27/01/1993	Yes	10	15.5	8.5	13.0	i	5242	1-500000
CZECH REPUBLIC	14/08/1990	No	6	12.0	5.0	5.5	C	9935	1-500000

## MEXICO

Party	Date	Direct Services	ALI Standard	ALI 5th+	ALI OWN+	ALI DES+	Type	Distance (km)	Traffic Range (passengers)
RUSSIAN FEDERATION	02/08/1976	No	1	1.0	1.0	1.0	i	10736	1-500000
PHILIPPINES	21/11/1952	No	11	16.5	9.5	14.0	i	14232	1-500000
THAILAND	23/05/1991	No	0	0.0	0.0	0.0	A	15761	1-500000
NEW ZEALAND	14/05/1999	No	15	13.0	20.0	17.5	o	11207	1-500000
SINGAPORE	21/06/1990	No	10	15.5	8.5	13.0	E	16624	1-500000
MALAYSIA	16/07/1992	No	10	15.5	8.5	13.0	E	16641	1-500000

**Table 3**

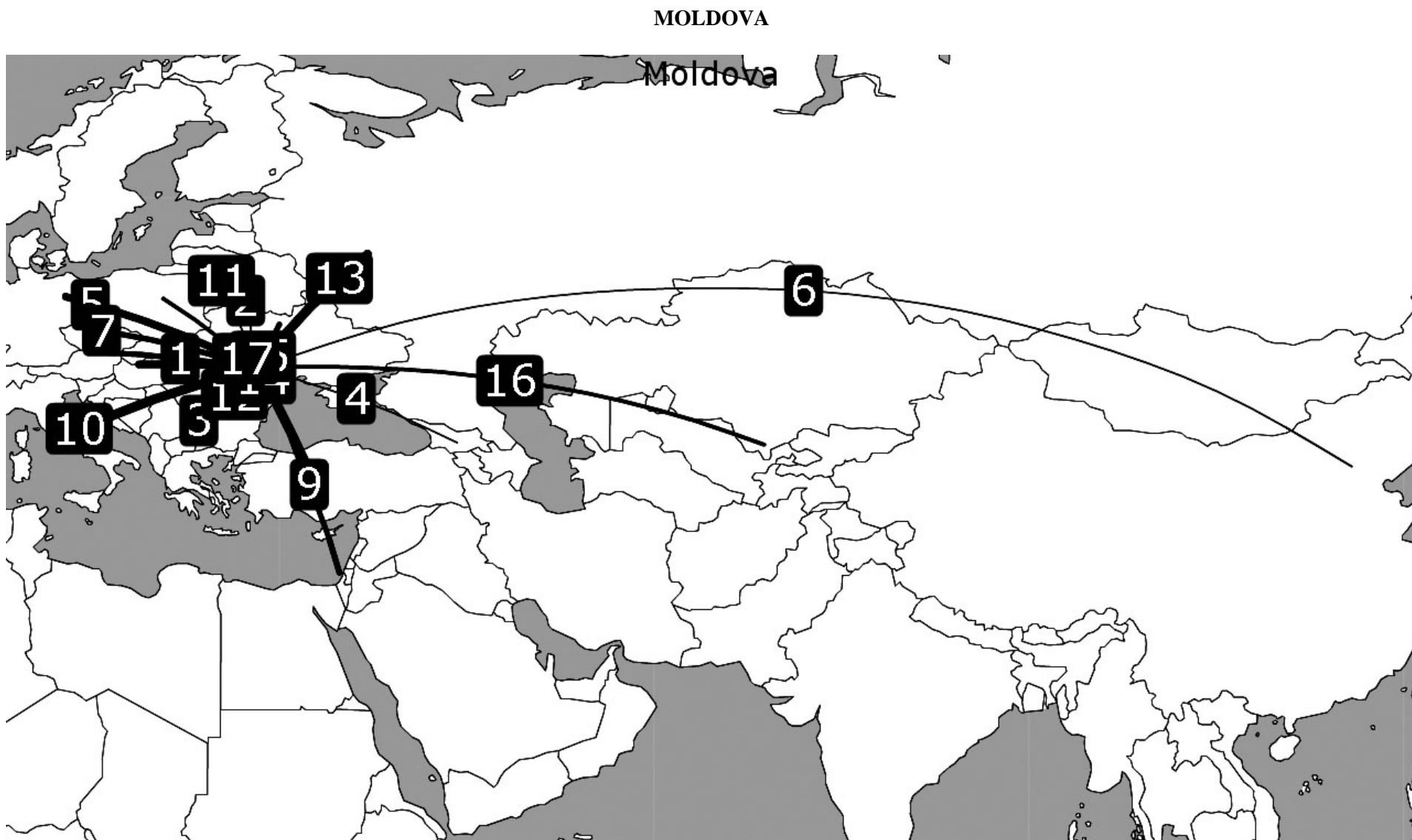
Direct air transportation services (passengers) not covered by a bilateral Air Services Agreement as recorded by ICAO (2005)

Countries or Territories	Traffic range
Guatemala	1-500000
Panama	1-500000
El Salvador	1-500000
Ecuador	1-500000

Countries or Territories	Traffic range
Dominican Republic	1-500000
Honduras	1-500000
Jamaica	1-500000



# MOLDOVA





# MOLDOVA

**Table 1**  
Selected indicators

STATISTICAL DATA						POLICY DATA			
General (2004)		Trade (2004)		Air transport (2004)		Trade (2006)		Air Transport (2005)	
Population (million)	4.22	Total trade (million US\$)	3,437	WASA traffic (passengers) (2005)	410,555	Final bound MFN tariffs (%)	6.7	Traffic weighted average ALI (Standard)	4.4
Share in world population (%)	0.07	Share in world trade (%)	0.02	Share of total WASA traffic (%) (2005)	0.06	Services sectors committed (out of ~160)	147	Traffic weighted average ALI (5th+)	4.8
GDP (million current US\$)	2,595	Trade per capita (US\$)	815	Number of planes (of which, in parenthesis, jets) (2005)	107 (18)	Tourism and travel-related services sectors committed (out of 3)	3	Traffic weighted average ALI (OWN+)	4.1
Share in world GDP (%)	0.01	Trade to GDP ratio (%)	132.5	Number of international airports (2005)	1	Services auxiliary to all modes of transport committed (out of 4)	4	Traffic weighted average ALI (DES+)	5.7
GDP per capita (current US\$)	615	Commercial services trade (million US\$)	695	Domestic traffic (passengers) (2005)	0	Air transport services sectors committed (out of 4)	CRS; Sell/Mark; Maint; Other <sup>1</sup>	Dispersion of ALI (standard)	0-12
Size (km <sup>2</sup> )	32,870	Share in world commercial services trade (%)	0.02	Air transport services (million US\$)	61	MFN exemptions on air transport services	Sell/Mark	National ownership regime (2004)	Not SOEC <sup>2</sup>
Density (pop. by km <sup>2</sup> )	128	Travel services (million US\$)	248	Passenger air transport services (million US\$)	30	Number of bilateral FTAs	16	Number of bilateral ASAs recorded by ICAO	17
				Freight air transport services (million US\$)	15	Number of regional FTAs	1	Number of plurilateral ASAs recorded by ICAO (2006)	0

<sup>1</sup> Passenger and freight transportation (CPC 731, 732); Rental of vessels with crew (CPC734).

<sup>2</sup> In dealing with airline designation in the future, Moldova is willing, on a case by case basis, to accept criteria other than the traditional ownership and control for itself and its foreign partners.

MOLDOVA

Chart 1

Share of traffic by ALI range  
(percentage, 2005)

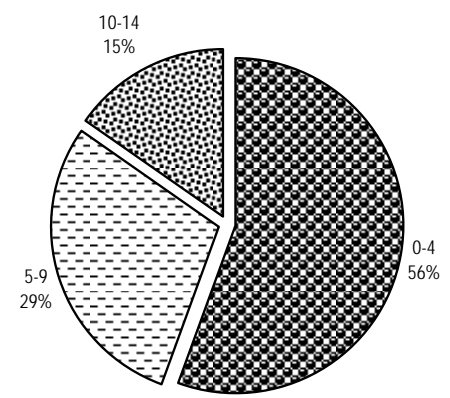


Chart 2

Share of traffic by type  
(percentage, 2005)

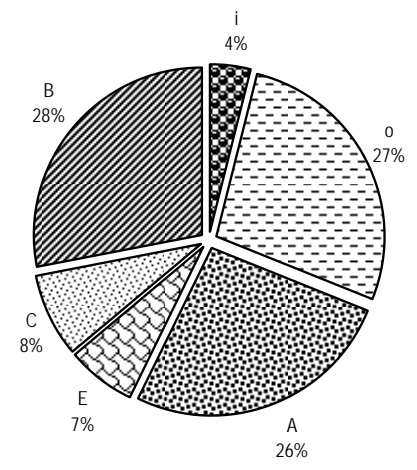
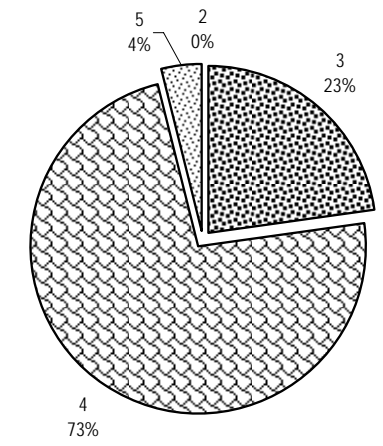


Chart 3

Share of traffic by region of partner  
(percentage, 2005)

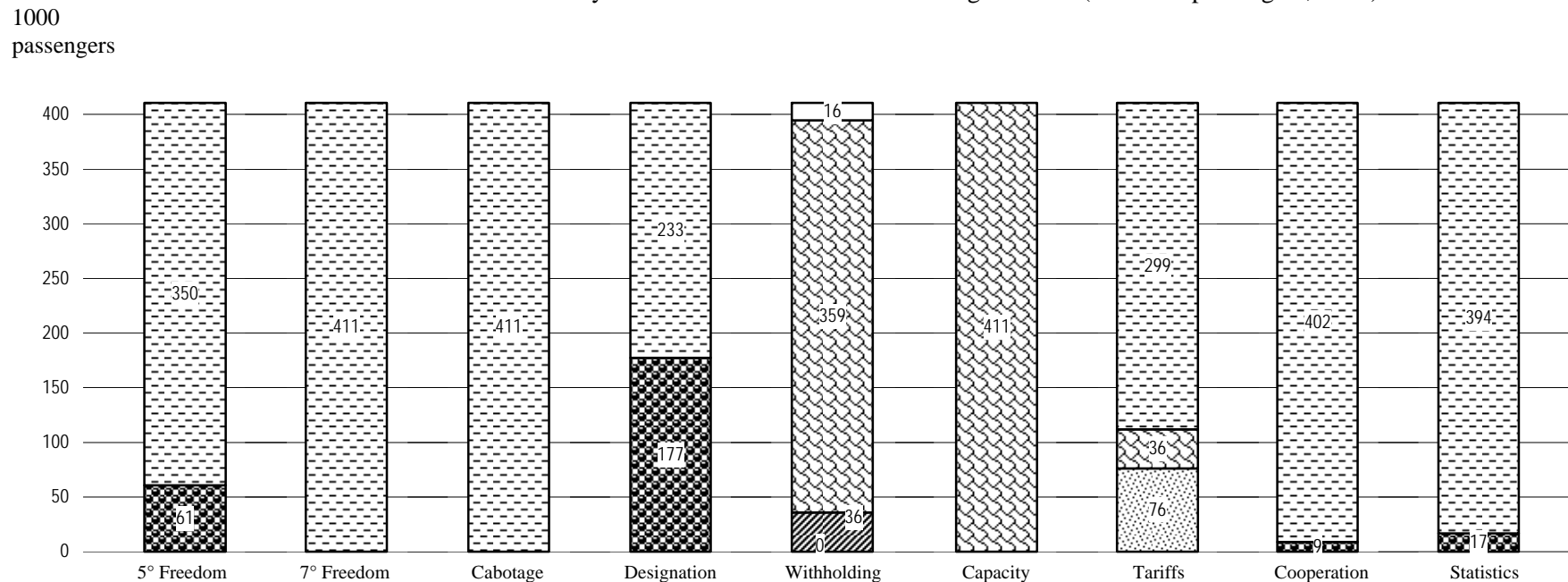


1 Africa; 2 Asia and Oceania;  
3 Commonwealth of Independent States;  
4 Europe; 5 Middle East; 6 North America;  
7 South and Central America and the Caribbean

# MOLDOVA

**Chart 4**

Distribution of traffic by feature of bilateral Air Services Agreements (thousand passengers, 2005)



**5° Freedom, 7° Freedom, Cabotage,  
Designation, Cooperation, Statistics**

With  
Without

**Withholding**

Principal Place of Business  
Community of Interest  
Substantial Ownership  
and Effective Control  
Undetermined

**Capacity**

Free Determination  
Bermuda I  
Pre-Determination  
Undetermined

**Tariffs**

Free Pricing  
Zone Pricing  
Double Disapproval  
Country of Origin  
Double Approval  
Undetermined

## MOLDOVA

**Table 2**  
Bilateral Air Services Agreements recorded by ICAO, selected indicators (2005)

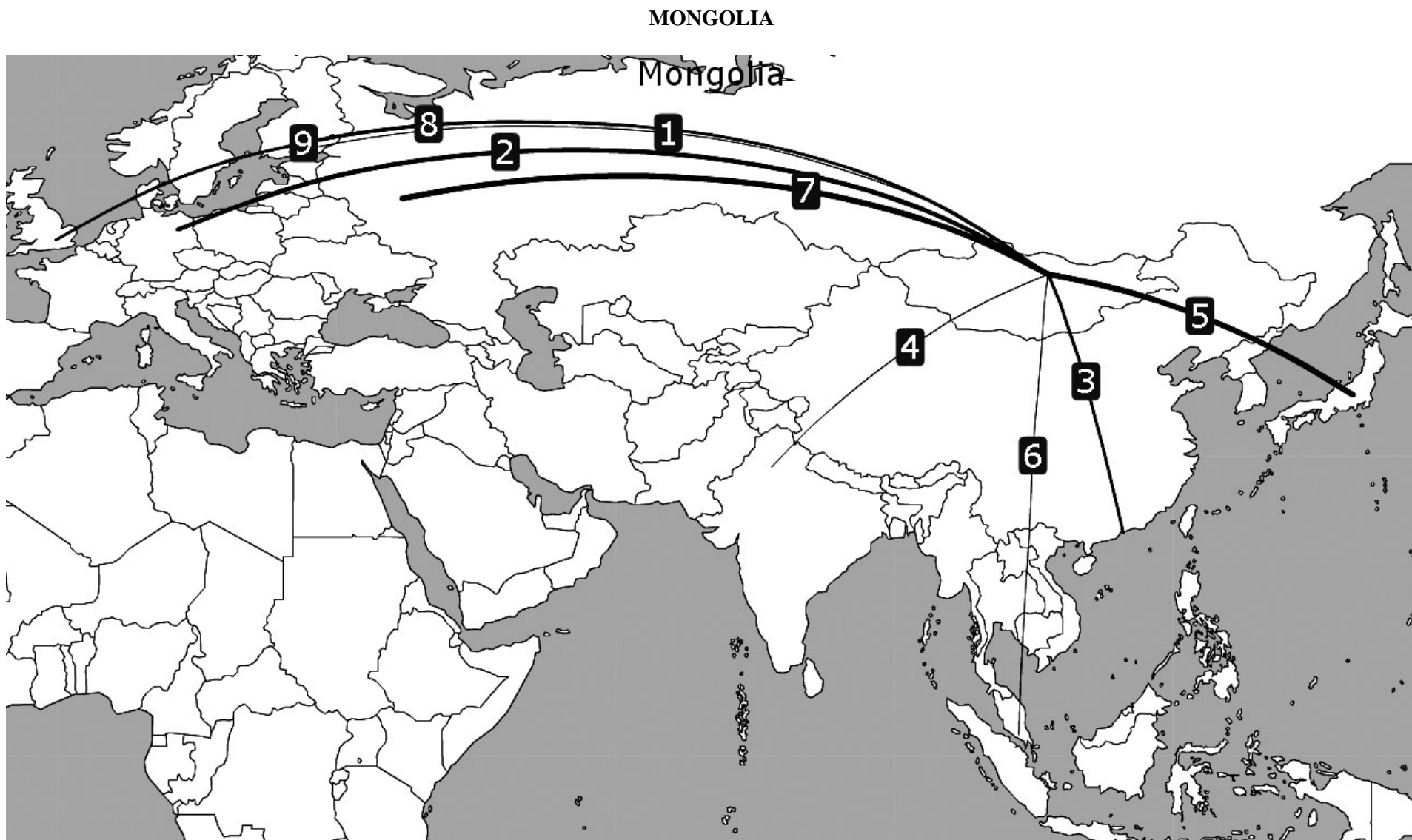
Party	Date	Direct Services	ALI Standard	ALI 5th+	ALI OWN+	ALI DES+	Type	Distance (km)	Traffic Range (passengers)
TURKEY	03/06/1995	Yes	4	3.5	3.5	7.5	B	664	1-500000
ITALY	19/09/1997	Yes	0	0.0	0.0	0.0	A	1414	1-500000
RUSSIAN FEDERATION	26/09/1994	Yes	6	5.0	5.0	5.5	o	1150	1-500000
GERMANY	21/05/1999	Yes	11	9.5	13.0	13.5	o	1657	1-500000
ROMANIA	28/06/1993	Yes	6	12.0	5.0	5.5	C	357	1-500000
HUNGARY	19/04/1995	Yes	10	15.5	8.5	13.0	E	741	1-500000
ISRAEL	22/06/1997	Yes	0	0.0	0.0	0.0	A	1735	1-500000
UKRAINE	20/03/1993	Yes	1	1.0	1.0	1.0	i	399	1-500000
AUSTRIA	20/07/1993	Yes	4	3.5	3.5	7.5	B	944	1-500000
CZECH REPUBLIC	24/02/2004	Yes	7	6.0	6.0	10.0	B	1114	1-500000
POLAND	27/07/1995	No	6	12.0	5.0	5.5	C	812	1-500000
BULGARIA	17/04/1996	No	0	0.0	0.0	0.0	A	650	1-500000
UZBEKISTAN	30/03/1995	No	5	4.5	4.5	8.5	B	3251	1-500000
CHINA	07/06/2000	No	4	3.5	3.5	7.5	B	6743	1-500000
LITHUANIA	05/04/1996	No	0	0.0	0.0	0.0	A	890	1-500000
GEORGIA	28/11/1997	No	4	3.5	3.5	7.5	B	1398	1-500000
BELARUS	12/09/1995	No	12	10.5	17.5	15.0	o	768	1-500000

**Table 3**  
Direct air transportation services (passengers) not covered by a bilateral Air Services Agreement as recorded by ICAO (2005)

Countries or territories	Traffic range
Portugal	1-500000
Greece	1-500000

Countries or territories	Traffic range
Cyprus	1-500000

# MONGOLIA



# MONGOLIA

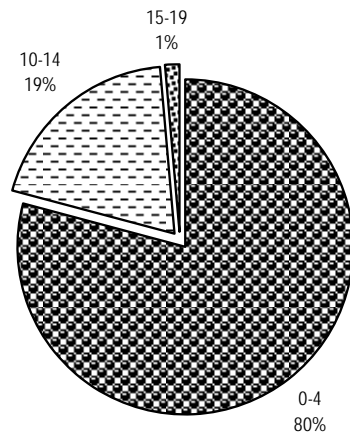
**Table 1**  
Selected indicators

STATISTICAL DATA						POLICY DATA			
General (2004)		Trade (2004)		Air transport (2004)		Trade (2006)		Air Transport (2005)	
Population (million)	2.51	Total trade (million US\$)	2,599	WASA traffic (passengers) (2005)	71,020	Final bound MFN tariffs (%)	17.6	Traffic weighted average ALI (Standard)	5.7
Share in world population (%)	0.04	Share in world trade (%)	0.01	Share of total WASA traffic (%) (2005)	0.01	Services sectors committed (out of ~160)	37	Traffic weighted average ALI (5th+)	5.0
GDP (million current US\$)	1,612	Trade per capita (US\$)	1,033	Number of planes (of which, in parenthesis, jets) (2005)	6 (1)	Tourism and travel-related services sectors committed (out of 3)	3	Traffic weighted average ALI (OWN+)	5.6
Share in world GDP (%)	0.00	Trade to GDP ratio (%)	161.2	Number of international airports (2005)	2	Services auxiliary to all modes of transport committed (out of 4)	0	Traffic weighted average ALI (DES+)	9.0
GDP per capita (current US\$)	641	Commercial services trade (million US\$)	826	Domestic traffic (passengers) (2005)	116,957	Air transport services sectors committed (out of 4)	0	Dispersion of ALI (standard)	4-16
Size (km <sup>2</sup> )	1,566,500	Share in world commercial services trade (%)	0.02	Air transport services (million US\$)	88	MFN exemptions on air transport services	0	National ownership regime (2004)	...
Density (pop. by km <sup>2</sup> )	2	Travel services (million US\$)	378	Passenger air transport services (million US\$)	18	Number of bilateral FTAs	0	Number of bilateral ASAs recorded by ICAO	9
				Freight air transport services (million US\$)	29	Number of regional FTAs	0	Number of plurilateral ASAs recorded by ICAO (2006)	0

## MONGOLIA

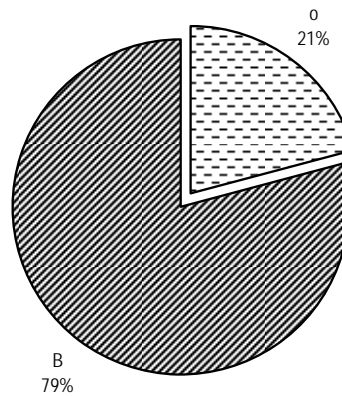
**Chart 1**

Share of traffic by ALI range  
(percentage, 2005)



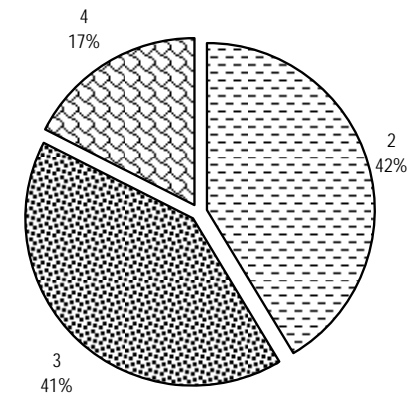
**Chart 2**

Share of traffic by type  
(percentage, 2005)



**Chart 3**

Share of traffic by region of partner  
(percentage, 2005)



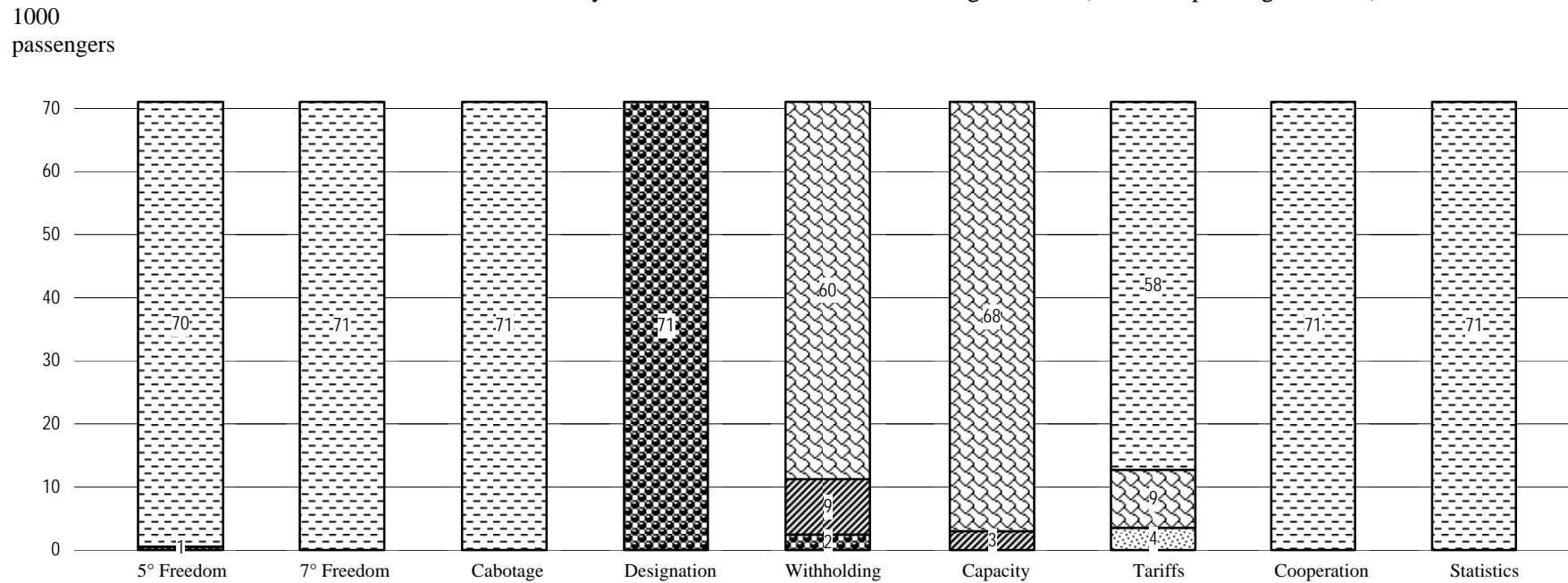
1 Africa; 2 Asia and Oceania;  
3 Commonwealth of Independent States;  
4 Europe; 5 Middle East; 6 North America;  
7 South and Central America and the Caribbean



# MONGOLIA

**Chart 4**

Distribution of traffic by feature of bilateral Air Services Agreements (thousand passengers, 2005)



**5° Freedom, 7° Freedom, Cabotage, Designation, Cooperation, Statistics**

- With
- Without

**Withholding**

- Principal Place of Business
- Community of Interest
- Substantial Ownership and Effective Control
- Undetermined

**Capacity**

- Free Determination
- Bermuda I
- Pre-Determination
- Undetermined

**Tariffs**

- Free Pricing
- Zone Pricing
- Double Disapproval
- Country of Origin
- Double Approval
- Undetermined

## MONGOLIA

**Table 2**  
Bilateral Air Services Agreements recorded by ICAO, selected indicators (2005)

Party	Date	Direct Services	ALI Standard	ALI 5th+	ALI OWN+	ALI DES+	Type	Distance (km)	Traffic Range (passengers)
RUSSIAN FEDERATION	08/09/1997	Yes	4	3.5	3.5	7.5	B	4633	1-500000
JAPAN	25/11/1993	Yes	4	3.5	3.5	7.5	B	3019	1-500000
GERMANY	29/05/1998	Yes	11	9.5	13.0	13.5	o	6614	1-500000
UNITED KINGDOM	01/03/2000	No	14	12.0	12.0	16.5	o	6980	1-500000
HONG KONG, CHINA	24/05/2000	No	12	10.5	17.5	15.0	o	2926	1-500000
SINGAPORE	18/05/1993	No	16	20.5	13.5	18.5	o	5197	1-500000
SWEDEN	19/06/1997	No	15	13.0	20.0	17.5	o	5543	1-500000
FINLAND	10/02/2000	No	12	10.5	17.5	15.0	o	5155	1-500000
INDIA	01/12/1998	No	4	3.5	3.5	7.5	B	3329	1-500000

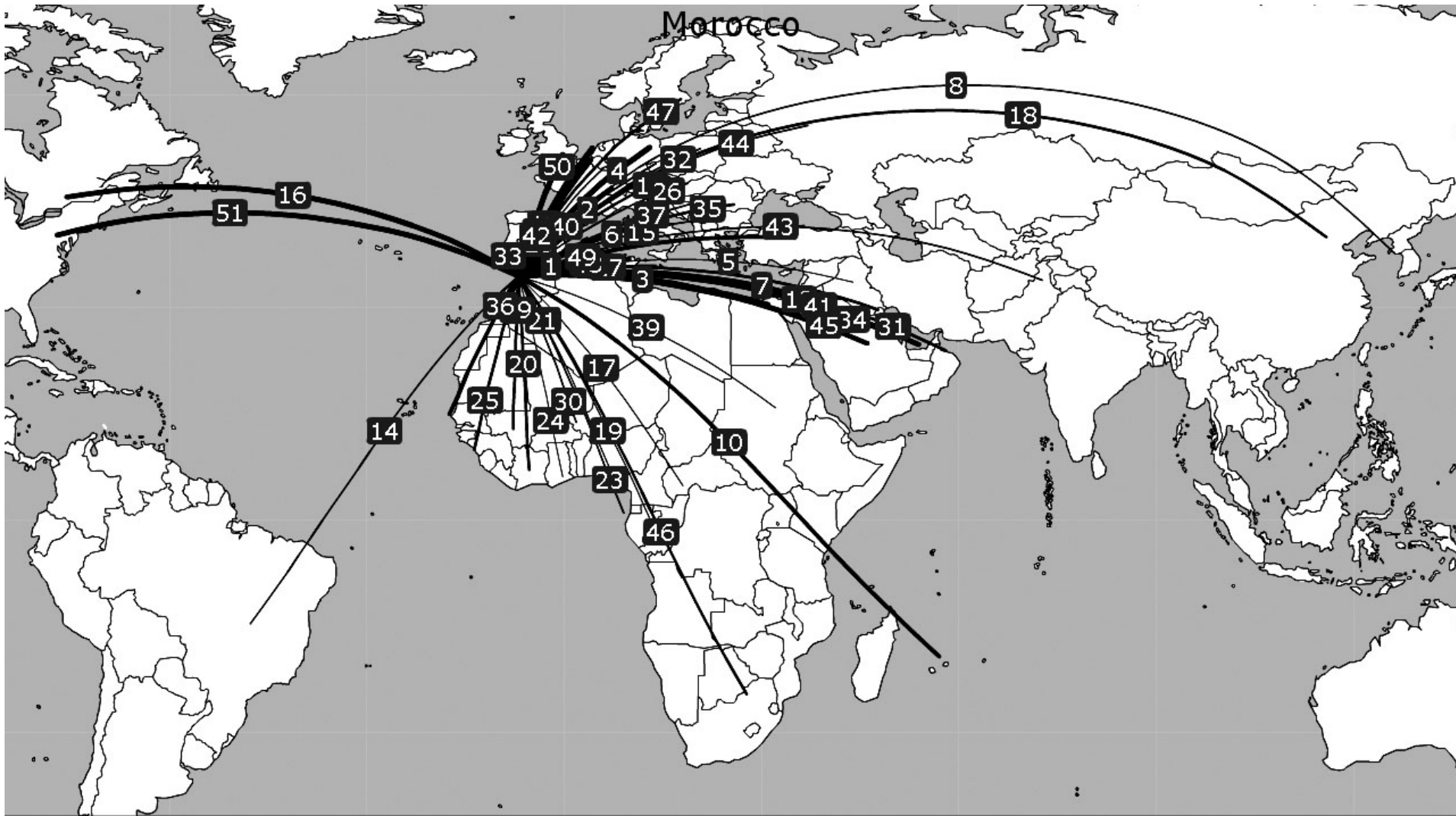
**Table 3**  
Direct air transportation services (passengers) not covered by a bilateral Air Services Agreement as recorded by ICAO (2005)

Countries or Territories	Traffic range
Korea, Republic of	1-500000
China	1-500000

Countries or Territories	Traffic range
Italy	1-500000

# MOROCCO

# MOROCCO



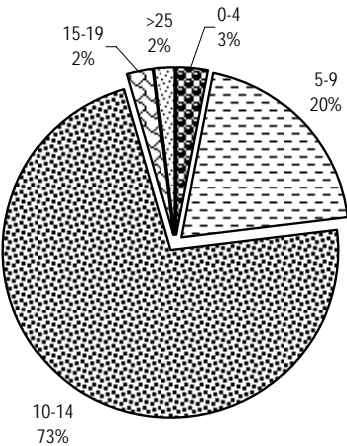
# MOROCCO

**Table 1**  
Selected indicators

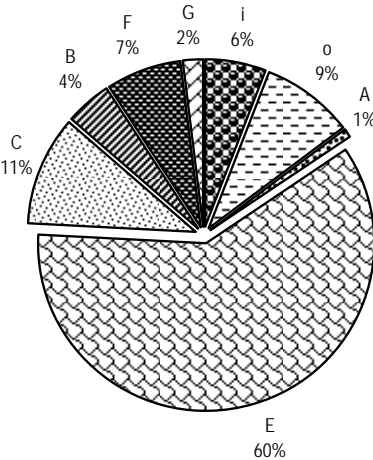
STATISTICAL DATA						POLICY DATA			
General (2004)		Trade (2004)		Air transport (2004)		Trade (2006)		Air Transport (2005)	
Population (million)	29.82	Total trade (million US\$)	35,440	WASA traffic (passengers) (2005)	5,304,592	Final bound MFN tariffs (%)	41.3	Traffic weighted average ALI (Standard)	10.5
Share in world population (%)	0.47	Share in world trade (%)	0.16	Share of total WASA traffic (%) (2005)	0.76	Services sectors committed (out of ~160)	45	Traffic weighted average ALI (5th+)	15.2
GDP (million current US\$)	50,031	Trade per capita (US\$)	1,188	Number of planes (of which, in parenthesis, jets) (2005)	44 (34)	Tourism and travel-related services sectors committed (out of 3)	3	Traffic weighted average ALI (OWN+)	9.0
Share in world GDP (%)	0.12	Trade to GDP ratio (%)	70.8	Number of international airports (2005)	12	Services auxiliary to all modes of transport committed (out of 4)	0	Traffic weighted average ALI (DES+)	13.0
GDP per capita (current US\$)	1,678	Commercial services trade (million US\$)	9,110	Domestic traffic (passengers) (2005)	755,266	Air transport services sectors committed (out of 4)	CRS; Sell/Mark; Maint	Dispersion of ALI (standard)	0-34
Size (km²)	446,300	Share in world commercial services trade (%)	0.21	Air transport services (million US\$)	1,038	MFN exemptions on air transport services	0	National ownership regime (2004)	...
Density (pop. by km²)	67	Travel services (million US\$)	4,497	Passenger air transport services (million US\$)	906	Number of bilateral FTAs	10	Number of bilateral ASAs recorded by ICAO	51
				Freight air transport services (million US\$)	132	Number of regional FTAs	3	Number of plurilateral ASAs recorded by ICAO (2006)	2

MOROCCO

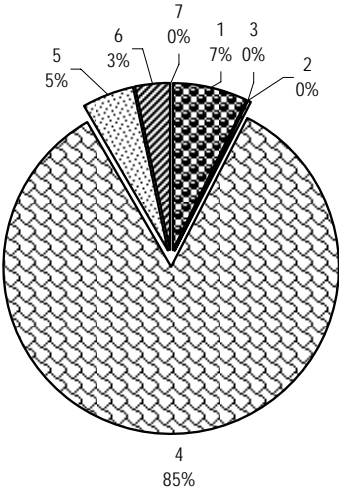
**Chart 1**  
Share of traffic by ALI range  
(percentage, 2005)



**Chart 2**  
Share of traffic by type  
(percentage, 2005)



**Chart 3**  
Share of traffic by region of partner  
(percentage, 2005)

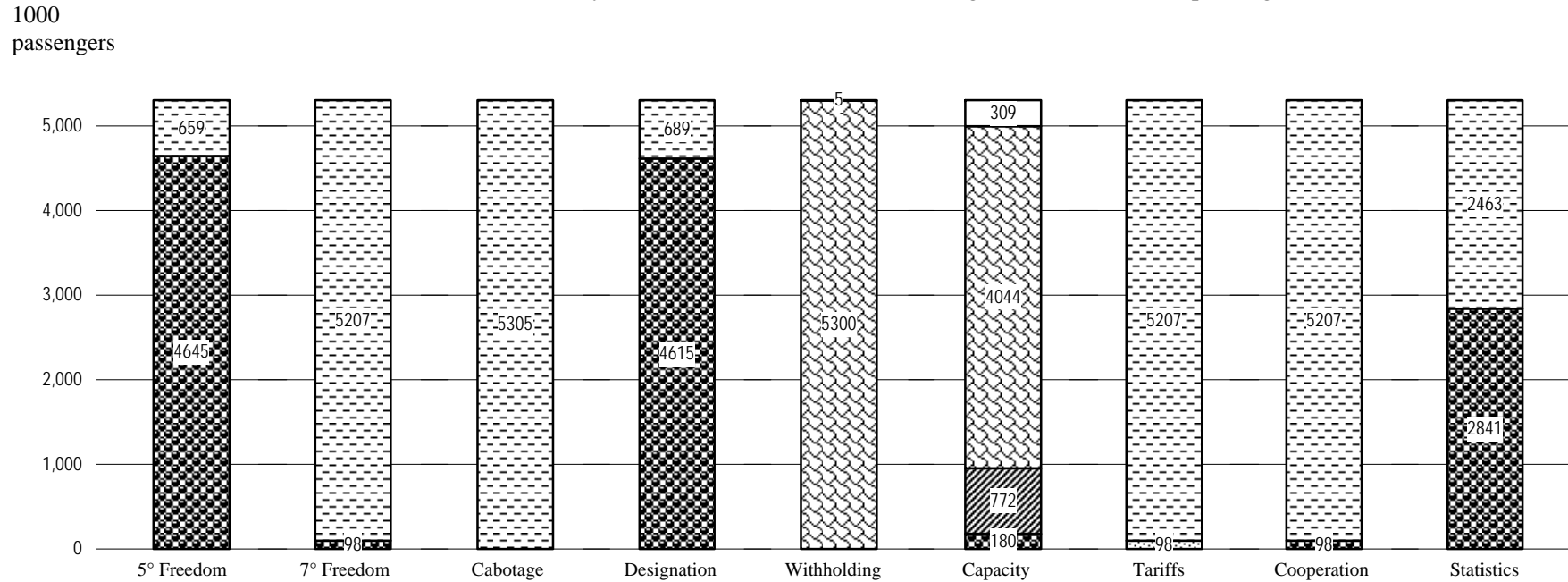


1 Africa; 2 Asia and Oceania;  
3 Commonwealth of Independent States;  
4 Europe; 5 Middle East; 6 North America;  
7 South and Central America and the Caribbean

# MOROCCO

**Chart 4**

Distribution of traffic by feature of bilateral Air Services Agreements (thousand passengers, 2005)



**5° Freedom, 7° Freedom, Cabotage, Designation, Cooperation, Statistics**

- With
- Without

**Withholding**

- Principal Place of Business
- Community of Interest
- Substantial Ownership and Effective Control
- Undetermined

**Capacity**

- Free Determination
- Bermuda I
- Pre-Determination
- Undetermined

**Tariffs**

- Free Pricing
- Zone Pricing
- Double Disapproval
- Country of Origin
- Double Approval
- Undetermined

## MOROCCO

**Table 2**  
Bilateral Air Services Agreements recorded by ICAO, selected indicators (2005)

Party	Date	Direct Services	ALI Standard	ALI 5th+	ALI OWN+	ALI DES+	Type	Distance (km)	Traffic Range (passengers)
FRANCE	25/10/1957	Yes	11	16.5	9.5	14.0	E	1817	2000001-2500000
SPAIN	07/07/1970	Yes	8	7.0	7.0	11.0	o	763	1-500000
ITALY	08/07/1967	Yes	6	12.0	5.0	5.5	C	1904	1-500000
GERMANY	12/10/1961	Yes	12	17.0	10.0	14.5	i	2237	1-500000
BELGIUM	20/01/1958	Yes	10	15.5	8.5	13.0	E	2078	1-500000
UNITED KINGDOM	22/10/1965	Yes	14	19.0	12.0	16.5	F	2017	1-500000
NETHERLANDS	20/05/1959	Yes	10	15.5	8.5	13.0	E	2244	1-500000
SWITZERLAND	05/07/1962	Yes	6	12.0	5.0	5.5	C	1872	1-500000
SAUDI ARABIA	07/03/1976	Yes	15	20.0	13.0	17.5	F	5247	1-500000
TUNISIA	10/07/1958	Yes	5	4.5	4.5	8.5	B	1576	1-500000
UNITED STATES	10/10/2001	Yes	34	36.0	29.0	35.0	G	5840	1-500000
CANADA	14/02/1975	Yes	14	19.0	12.0	13.0	o	6178	1-500000
ALGERIA	30/04/1963	Yes	10	15.5	8.5	13.0	E	945	1-500000
UNITED ARAB EMIRATES	26/02/1987	Yes	4	3.5	3.5	7.5	B	5958	1-500000
PORTUGAL	03/04/1958	Yes	11	16.5	9.5	14.0	E	562	1-500000
EGYPT	19/05/1960	Yes	10	15.5	8.5	13.0	E	3601	1-500000
TURKEY	24/09/1985	Yes	6	12.0	5.0	5.5	C	3230	1-500000
MAURITANIA	07/07/1970	Yes	11	16.5	9.5	14.0	E	1986	1-500000
SENEGAL	03/07/1967	Yes	10	15.5	8.5	13.0	E	2408	1-500000
CÔTE D'IVOIRE	31/08/1979	Yes	0	0.0	0.0	0.0	A	3210	1-500000
QATAR	20/03/1987	Yes	6	12.0	5.0	5.5	C	5657	1-500000
AUSTRIA	22/10/1975	Yes	4	3.5	3.5	7.5	B	2489	1-500000
SWEDEN	14/11/1977	No	0	0.0	0.0	0.0	A	3356	1-500000
GUINEA	11/04/1978	Yes	10	15.5	8.5	13.0	E	2875	1-500000
KUWAIT	05/12/1975	No	11	16.5	9.5	14.0	E	5160	1-500000
JORDAN	11/05/1978	No	15	20.0	13.0	17.5	F	3972	1-500000
MALI	27/03/1961	Yes	10	15.5	8.5	13.0	E	2381	1-500000



## MOROCCO

Party	Date	Direct Services	ALI Standard	ALI 5th+	ALI OWN+	ALI DES+	Type	Distance (km)	Traffic Range (passengers)
ROMANIA	06/12/1971	Yes	6	12.0	5.0	5.5	C	3043	1-500000
CHINA	03/12/1998	No	4	3.5	3.5	7.5	B	9951	1-500000
OMAN	24/01/1985	No	6	12.0	5.0	5.5	C	6385	1-500000
BAHRAIN	14/10/1991	No	4	3.5	3.5	7.5	B	5531	1-500000
SOUTH AFRICA	18/02/1994	No	4	3.5	3.5	7.5	B	8013	1-500000
GABON	22/02/1977	Yes	10	15.5	8.5	13.0	E	4111	1-500000
LUXEMBOURG	19/05/1961	No	10	15.5	8.5	13.0	E	2034	1-500000
MALTA	26/05/1983	Yes	0	0.0	0.0	0.0	A	1957	1-500000
POLAND	29/11/1969	No	6	12.0	5.0	5.5	C	3004	1-500000
NIGER	07/11/1982	Yes	10	15.5	8.5	13.0	E	2453	1-500000
BRAZIL	30/04/1975	No	10	15.5	8.5	13.0	E	7665	1-500000
RUSSIAN FEDERATION	17/03/1962	No	6	12.0	5.0	5.5	i	4156	1-500000
KOREA, REPUBLIC OF	01/06/2000	No	4	3.5	3.5	7.5	B	10750	1-500000
CZECH REPUBLIC	08/05/1961	No	11	16.5	9.5	14.0	E	2491	1-500000
HUNGARY	21/03/1967	No	0	0.0	0.0	0.0	A	2628	1-500000
BULGARIA	14/10/1966	No	0	0.0	0.0	0.0	i	2784	1-500000
SERBIA AND MONTENEGRO	03/02/1964	No	4	3.5	3.5	7.5	B	2623	1-500000
PAKISTAN	12/06/1974	No	6	12.0	5.0	5.5	C	7181	1-500000
SUDAN	24/06/1978	No	11	16.5	9.5	14.0	E	4441	1-500000
EQUATORIAL GUINEA	09/05/1980	No	0	0.0	0.0	0.0	A	3740	1-500000
GHANA	29/01/1963	No	4	3.5	3.5	7.5	B	3243	1-500000
CONGO, DEM. REPUBLIC OF	03/11/1976	No	10	15.5	8.5	13.0	E	4860	1-500000
CENTRAL AFRICAN REPUBLIC	11/02/1987	No	0	0.0	0.0	0.0	A	4221	1-500000
IRAQ	18/12/1974	No	11	16.5	9.5	14.0	E	4699	<1

## MOROCCO

**Table 3**

Direct air transportation services (passengers) not covered by a bilateral Air Services Agreement as recorded by ICAO (2005)

Countries or Territories	Traffic range
Libyan Arab Jamahiriya	1-500000
Lebanon	1-500000
Syrian Arab Republic	1-500000
Cameroon	1-500000

Countries or Territories	Traffic range
Burkina Faso	1-500000
Benin	1-500000
Togo	1-500000

# MOZAMBIQUE

MOZAMBIQUE

Mozambique



# MOZAMBIQUE

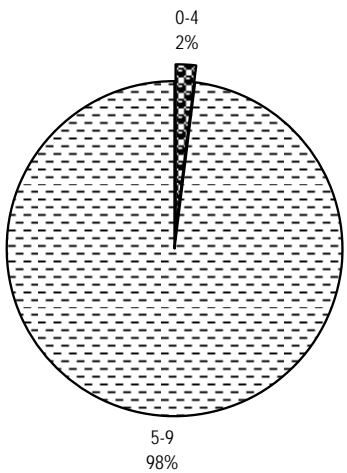
**Table 1**  
Selected indicators

STATISTICAL DATA						POLICY DATA			
General (2004)		Trade (2004)		Air transport (2004)		Trade (2006)		Air Transport (2005)	
Population (million)	19.42	Total trade (million US\$)	4,111	WASA traffic (passengers) (2005)	246,575	Final bound MFN tariffs (%)	97.5	Traffic weighted average ALI (Standard)	8.8
Share in world population (%)	0.31	Share in world trade (%)	0.02	Share of total WASA traffic (%) (2005)	0.04	Services sectors committed (out of ~160)	17	Traffic weighted average ALI (5th+)	14.2
GDP (million current US\$)	6,086	Trade per capita (US\$)	212	Number of planes (of which, in parenthesis, jets) (2005)	7 (5)	Tourism and travel-related services sectors committed (out of 3)	0	Traffic weighted average ALI (OWN+)	7.3
Share in world GDP (%)	0.01	Trade to GDP ratio (%)	67.6	Number of international airports (2005)	10	Services auxiliary to all modes of transport committed (out of 4)	0	Traffic weighted average ALI (DES+)	7.8
GDP per capita (current US\$)	313	Commercial services trade (million US\$)	758	Domestic traffic (passengers) (2005)	220,792	Air transport services sectors committed (out of 4)	0	Dispersion of ALI (standard)	0-9
Size (km <sup>2</sup> )	784,090	Share in world commercial services trade (%)	0.02	Air transport services (million US\$)	9	MFN exemptions on air transport services	0	National ownership regime (2004)	SOEC <sup>1</sup>
Density (pop. by km <sup>2</sup> )	25	Travel services (million US\$)	229	Passenger air transport services (million US\$)	7	Number of bilateral FTAs	0	Number of bilateral ASAs recorded by ICAO	6
				Freight air transport services (million US\$)	1 (2003)	Number of regional FTAs	2	Number of plurilateral ASAs recorded by ICAO (2006)	0

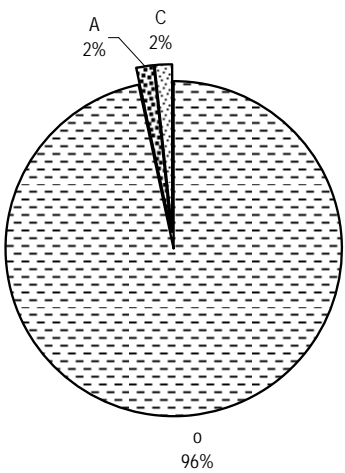
<sup>1</sup> In dealing with airline designation in the future, Mozambique is willing to accept criteria other than the traditional ownership and control for itself and its foreign partners.

MOZAMBIQUE

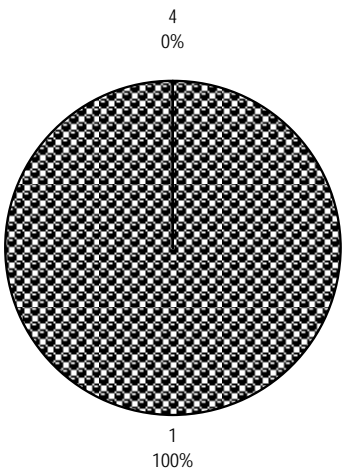
**Chart 1**  
Share of traffic by ALI range  
(percentage, 2005)



**Chart 2**  
Share of traffic by type  
(percentage, 2005)



**Chart 3**  
Share of traffic by region of partner  
(percentage, 2005)

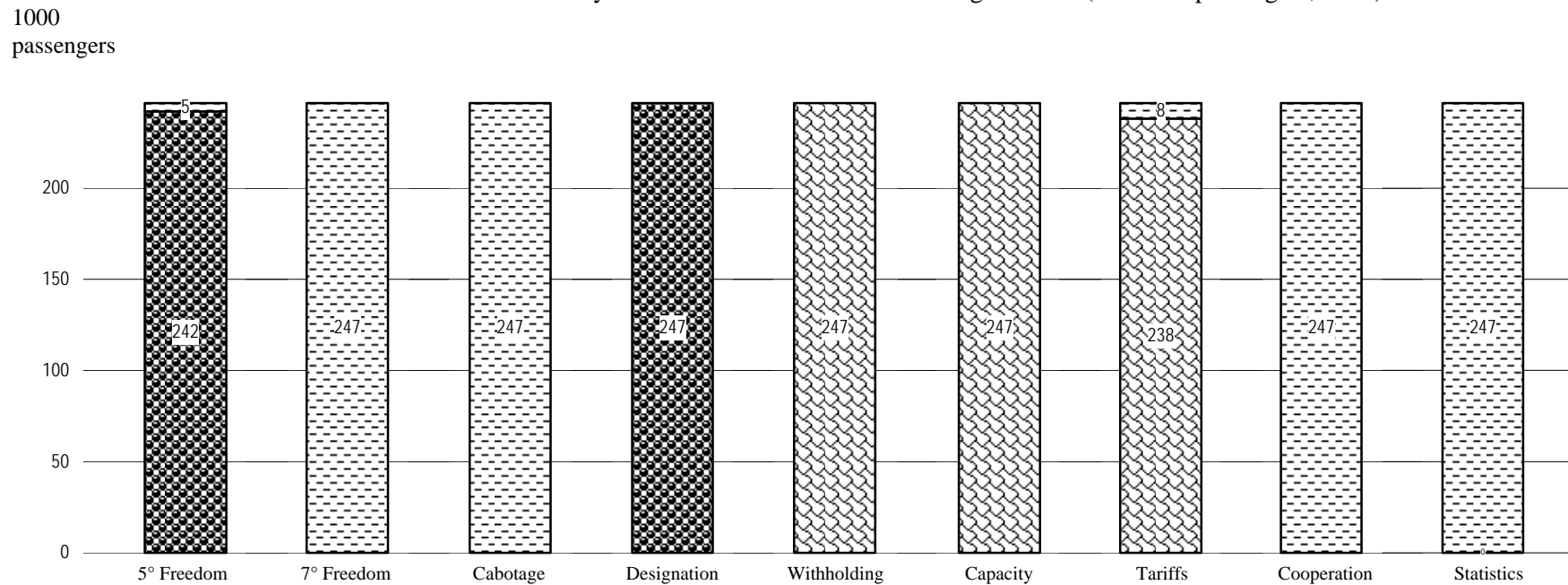


1 Africa; 2 Asia and Oceania;  
3 Commonwealth of Independent States;  
4 Europe; 5 Middle East; 6 North America;  
7 South and Central America and the Caribbean



# MOZAMBIQUE

**Chart 4**





Distribution of traffic by feature of bilateral Air Services Agreements (thousand passengers, 2005)







## 5° Freedom, 7° Freedom, Cabotage, Designation, Cooperation, Statistics

-  With
-  Without






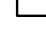
## Withholding

-  Principal Place of Business
-  Community of Interest
-  Substantial Ownership and Effective Control
-  Undetermined

## Capacity

-  Free Determination
-  Bermuda I
-  Pre-Determination
-  Undetermined

## Tariffs

-  Free Pricing
-  Zone Pricing
-  Double Disapproval
-  Country of Origin
-  Double Approval
-  Undetermined

## MOZAMBIQUE

**Table 2**  
Bilateral Air Services Agreements recorded by ICAO, selected indicators (2005)

Party	Date	Direct Services	ALI Standard	ALI 5th+	ALI OWN+	ALI DES+	Type	Distance (km)	Traffic Range (passengers)
SOUTH AFRICA	10/05/2002	Yes	9	14.5	7.5	8.0	o	1622	1-500000
ZIMBABWE	07/08/1980	Yes	0	0.0	0.0	0.0	A	919	1-500000
MALAWI	23/10/1984	Yes	6	12.0	5.0	5.5	C	1342	1-500000
LESOTHO	26/08/1978	No	0	0.0	0.0	0.0	A	626	1-500000
ROMANIA	21/04/1979	No	0	0.0	0.0	0.0	A	7861	1-500000
RUSSIAN FEDERATION	12/02/1976	No	7	13.0	6.0	6.5	C	9108	<1

**Table 3**  
Direct air transportation services (passengers) not covered by a bilateral Air Services Agreement as recorded by ICAO (2005)

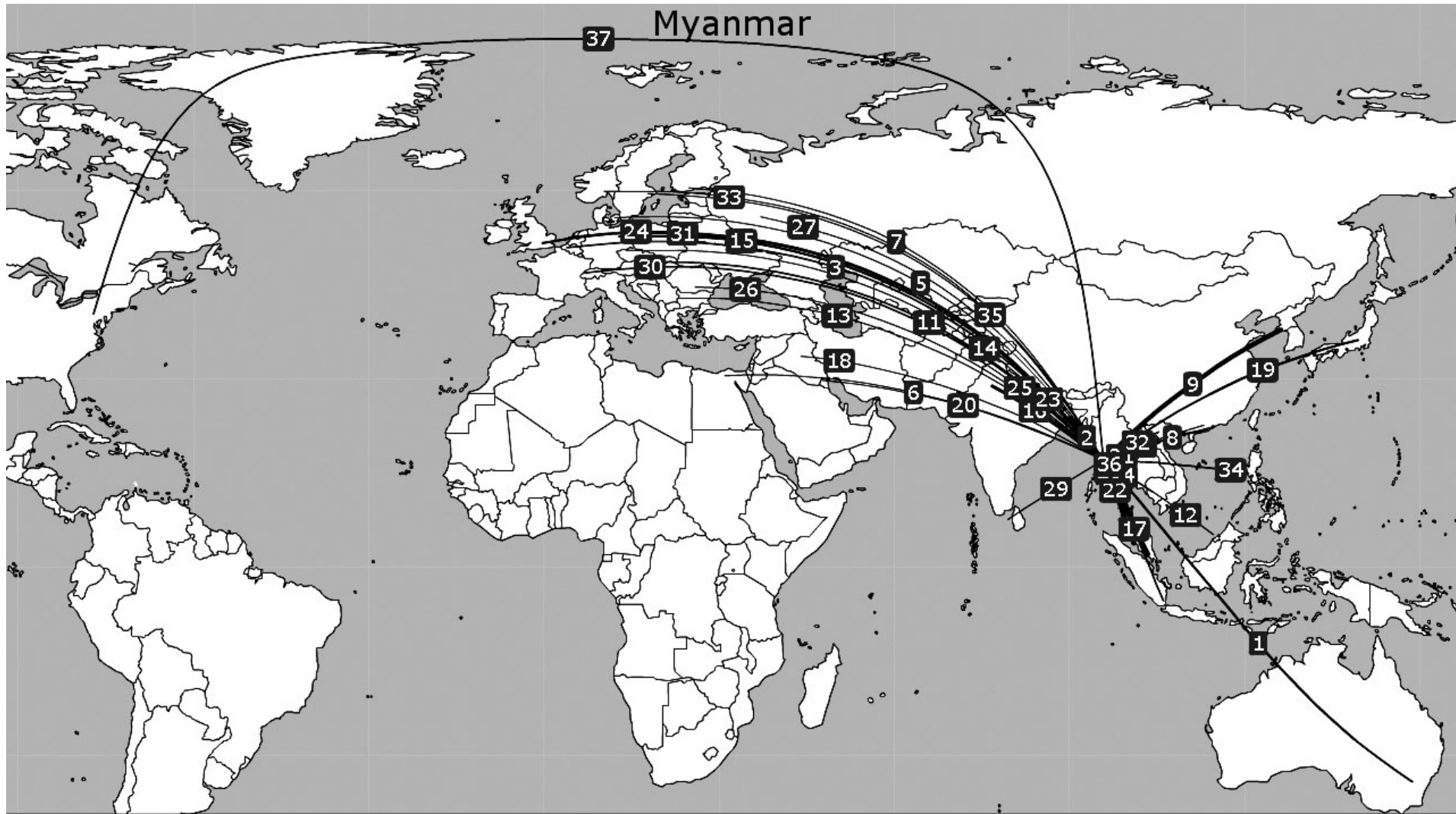
Countries or territories	Traffic range
Portugal	1-500000
Tanzania	1-500000

Countries or territories	Traffic range
Swaziland	1-500000
Kenya	1-500000



# MYANMAR

# MYANMAR



# MYANMAR

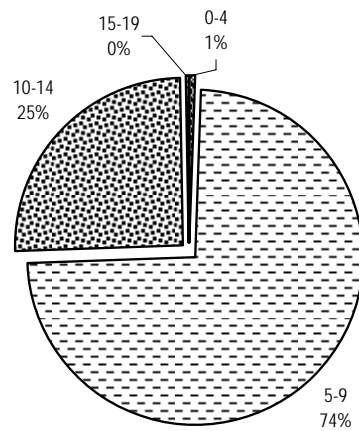
**Table 1**  
Selected indicators

STATISTICAL DATA						POLICY DATA			
General (2004)		Trade (2004)		Air transport (2004)		Trade (2006)		Air Transport (2005)	
Population (million)	50.00	Total trade (million US\$)	5,601	WASA traffic (passengers) (2005)	679,967	Final bound MFN tariffs (%)	83.6	Traffic weighted average ALI (Standard)	7.1
Share in world population (%)	0.79	Share in world trade (%)	0.03	Share of total WASA traffic (%) (2005)	0.10	Services sectors committed (out of ~160)	5	Traffic weighted average ALI (5th+)	12.8
GDP (million current US\$)	...	Trade per capita (US\$)	112	Number of planes (of which, in parenthesis, jets) (2005)	14 (5)	Tourism and travel-related services sectors committed (out of 3)	2	Traffic weighted average ALI (OWN+)	6.1
Share in world GDP (%)	...	Trade to GDP ratio (%)	...	Number of international airports (2005)	3	Services auxiliary to all modes of transport committed (out of 4)	0	Traffic weighted average ALI (DES+)	7.4
GDP per capita (current US\$)	...	Commercial services trade (million US\$)	676	Domestic traffic (passengers) (2005)	571,260	Air transport services sectors committed (out of 4)	0	Dispersion of ALI (standard)	0-18
Size (km²)	657,550	Share in world commercial services trade (%)	0.02	Air transport services (million US\$)	...	MFN exemptions on air transport services	0	National ownership regime (2004)	...
Density (pop. by km²)	76	Travel services (million US\$)	113	Passenger air transport services (million US\$)	...	Number of bilateral FTAs	1	Number of bilateral ASAs recorded by ICAO	37
				Freight air transport services (million US\$)	...	Number of regional FTAs	3	Number of plurilateral ASAs recorded by ICAO (2006)	2

## MYANMAR

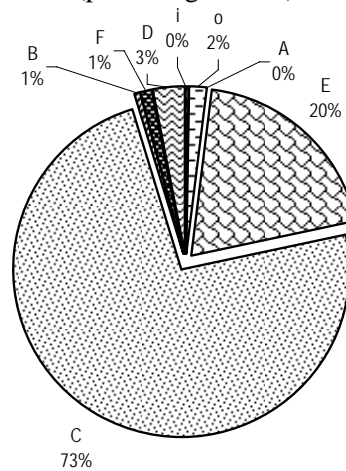
**Chart 1**

Share of traffic by ALI range  
(percentage, 2005)



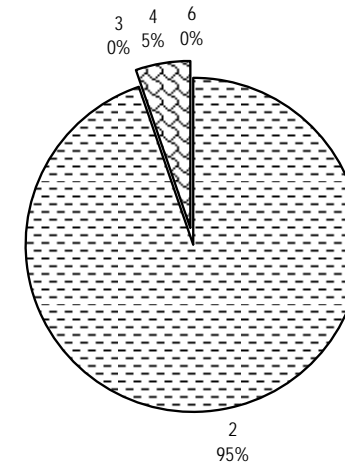
**Chart 2**

Share of traffic by type  
(percentage, 2005)



**Chart 3**

Share of traffic by region of partner  
(percentage, 2005)

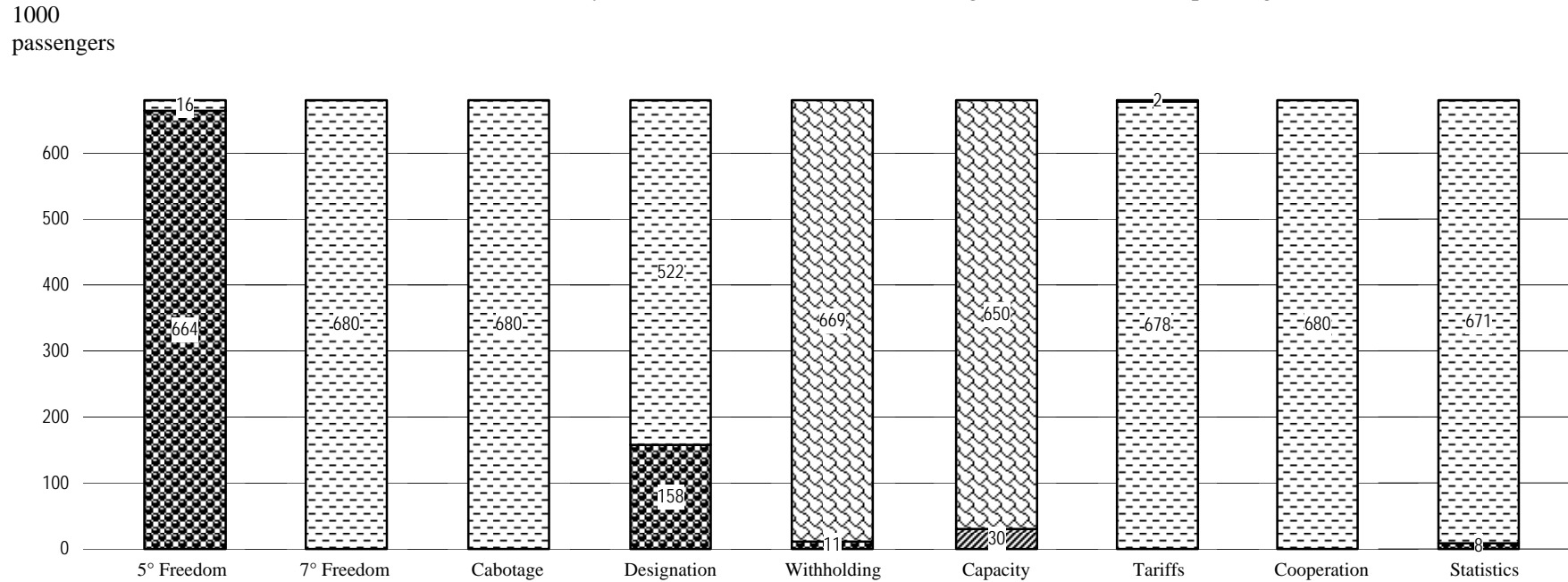


1 Africa; 2 Asia and Oceania;  
3 Commonwealth of Independent States;  
4 Europe; 5 Middle East; 6 North America;  
7 South and Central America and the Caribbean

# MYANMAR

**Chart 4**

Distribution of traffic by feature of bilateral Air Services Agreements (thousand passengers, 2005)



**5° Freedom, 7° Freedom, Cabotage, Designation, Cooperation, Statistics**

With  
Without

**Withholding**

Principal Place of Business  
Community of Interest  
Substantial Ownership and Effective Control  
Undetermined

**Capacity**

Free Determination  
Bermuda I  
Pre-Determination  
Undetermined

**Tariffs**

Free Pricing  
Zone Pricing  
Double Disapproval  
Country of Origin  
Double Approval  
Undetermined

## MYANMAR

**Table 2**  
Bilateral Air Services Agreements recorded by ICAO, selected indicators (2005)

Party	Date	Direct Services	ALI Standard	ALI 5th+	ALI OWN+	ALI DES+	Type	Distance (km)	Traffic Range (passengers)
THAILAND	15/08/1969	Yes	6	12.0	5.0	5.5	C	576	1-500000
SINGAPORE	23/01/1996	Yes	10	15.5	8.5	13.0	E	1920	1-500000
MALAYSIA	12/08/1976	Yes	6	12.0	5.0	5.5	C	1635	1-500000
INDIA	23/01/1979	Yes	10	15.5	8.5	13.0	E	2344	1-500000
BANGLADESH	03/08/1977	Yes	6	12.0	5.0	5.5	C	979	1-500000
KOREA, REPUBLIC OF	28/01/1978	No	6	12.0	5.0	5.5	C	3796	1-500000
GERMANY	27/12/1977	No	6	12.0	5.0	5.5	C	8508	1-500000
HONG KONG, CHINA	04/03/1997	No	12	10.5	17.5	15.0	o	1981	1-500000
JAPAN	01/02/1972	No	10	15.5	8.5	9.0	D	4782	1-500000
AUSTRALIA	23/09/1976	No	6	12.0	5.0	5.5	C	8108	1-500000
UNITED KINGDOM	25/10/1952	No	14	19.0	12.0	16.5	F	8991	1-500000
AUSTRIA	03/12/1976	No	6	12.0	5.0	5.5	C	7884	1-500000
SWITZERLAND	31/10/1960	No	11	16.5	9.5	10.0	D	8567	1-500000
CAMBODIA	17/10/1996	No	4	3.5	3.5	7.5	B	1107	1-500000
INDONESIA	28/07/1977	No	10	15.5	8.5	9.0	D	2804	1-500000
NETHERLANDS	25/05/1977	No	10	15.5	8.5	9.0	D	8631	1-500000
PHILIPPINES	03/07/1979	No	6	12.0	5.0	5.5	C	2666	1-500000
VIET NAM	13/10/1995	No	5	4.5	4.5	8.5	B	1124	1-500000
BELGIUM	17/08/1960	No	11	16.5	9.5	10.0	D	8702	1-500000
UNITED STATES	28/09/1949	No	15	20.0	13.0	17.5	i	13550	1-500000
DENMARK	30/07/1951	No	15	20.0	13.0	17.5	i	8082	1-500000
LAO PEOPLE'S DEM. REP.	12/03/1991	No	6	12.0	5.0	5.5	C	700	1-500000
SRI LANKA	29/06/1950	No	11	16.5	9.5	10.0	i	2085	1-500000
SWEDEN	14/09/1950	No	15	20.0	13.0	17.5	i	7742	1-500000
RUSSIAN FEDERATION	07/12/1970	No	6	12.0	5.0	5.5	C	6526	1-500000
KUWAIT	12/04/1983	No	0	0.0	0.0	0.0	A	5089	1-500000
EGYPT	29/09/1978	No	6	12.0	5.0	5.5	C	6708	1-500000

## MYANMAR

Party	Date	Direct Services	ALI Standard	ALI 5th+	ALI OWN+	ALI DES+	Type	Distance (km)	Traffic Range (passengers)
MACAO, CHINA	12/03/1999	No	12	10.5	17.5	15.0	o	1922	1-500000
NEPAL	26/08/1996	No	14	19.0	12.0	16.5	F	1649	1-500000
NORWAY	22/06/1953	No	15	20.0	13.0	17.5	i	8153	1-500000
PAKISTAN	03/08/1971	No	6	12.0	5.0	5.5	C	2972	1-500000
BRUNEI DARUSSALAM	03/08/1995	No	18	22.5	22.5	20.5	o	2438	1-500000
FINLAND	08/03/1980	No	6	12.0	5.0	5.5	C	7363	1-500000
CZECH REPUBLIC	15/12/1965	No	11	16.5	9.5	10.0	D	8008	1-500000
BULGARIA	07/10/1971	No	0	0.0	0.0	0.0	A	7371	1-500000
ROMANIA	30/05/1979	No	6	12.0	5.0	5.5	C	7144	<1
IRAQ	17/09/1979	No	6	12.0	5.0	5.5	C	5470	<1

**Table 3**

Direct air transportation services (passengers) not covered by a bilateral Air Services Agreement as recorded by ICAO (2005)

Countries or Territories	Traffic range
China	1-500000
Taipei, Chinese	1-500000

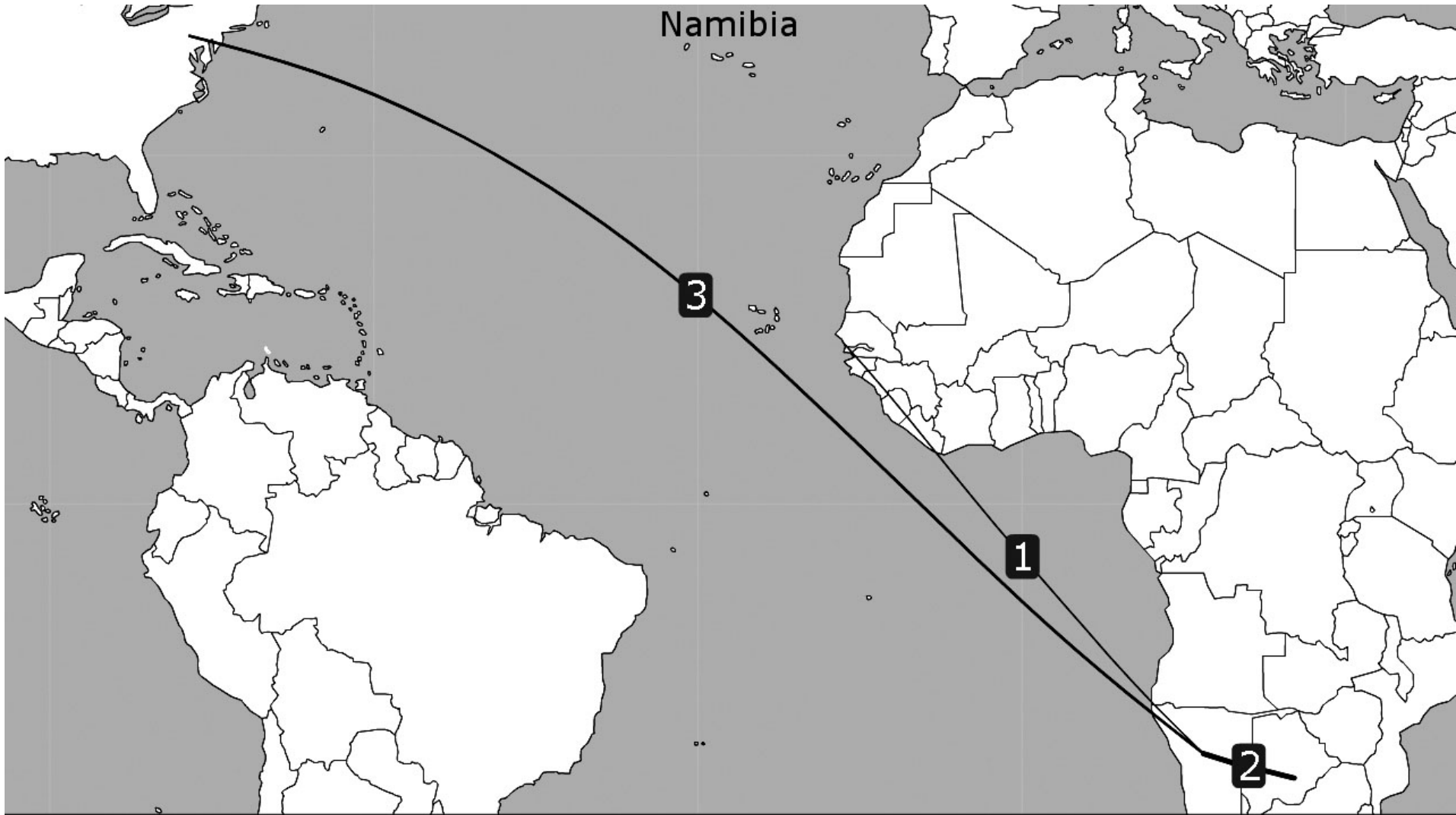
Countries or Territories	Traffic range
Qatar	1-500000





# **NAMIBIA**

NAMIBIA



# NAMIBIA

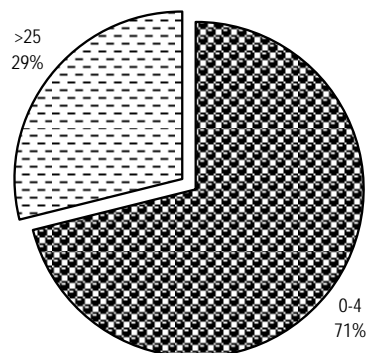
**Table 1**  
Selected indicators

STATISTICAL DATA						POLICY DATA			
General (2004)		Trade (2004)		Air transport (2004)		Trade (2006)		Air Transport (2005)	
Population (million)	2.01	Total trade (million US\$)	4,776	WASA traffic (passengers) (2005)	8,320	Final bound MFN tariffs (%)	19.1	Traffic weighted average ALI (Standard)	10.9
Share in world population (%)	0.03	Share in world trade (%)	0.02	Share of total WASA traffic (%) (2005)	0.00	Services sectors committed (out of ~160)	3	Traffic weighted average ALI (5th+)	11.4
GDP (million current US\$)	5,712	Trade per capita (US\$)	2,377	Number of planes (of which, in parenthesis, jets) (2005)	10 (5)	Tourism and travel-related services sectors committed (out of 3)	2	Traffic weighted average ALI (OWN+)	9.4
Share in world GDP (%)	0.01	Trade to GDP ratio (%)	83.6	Number of international airports (2005)	3	Services auxiliary to all modes of transport committed (out of 4)	0	Traffic weighted average ALI (DES+)	13.8
GDP per capita (current US\$)	2,843	Commercial services trade (million US\$)	839	Domestic traffic (passengers) (2005)	51,786	Air transport services sectors committed (out of 4)	0	Dispersion of ALI (standard)	4-28
Size (km²)	823,290	Share in world commercial services trade (%)	0.02	Air transport services (million US\$)	67	MFN exemptions on air transport services	0	National ownership regime (2004)	...
Density (pop. by km²)	2	Travel services (million US\$)	492	Passenger air transport services (million US\$)	...	Number of bilateral FTAs	1	Number of bilateral ASAs recorded by ICAO	3
				Freight air transport services (million US\$)	...	Number of regional FTAs	2	Number of plurilateral ASAs recorded by ICAO (2006)	0

## NAMIBIA

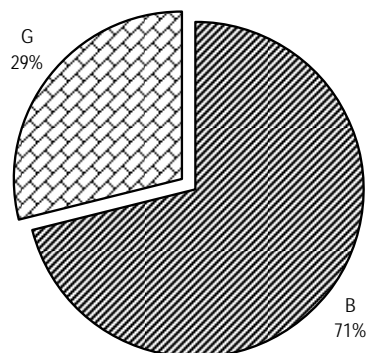
**Chart 1**

Share of traffic by ALI range  
(percentage, 2005)



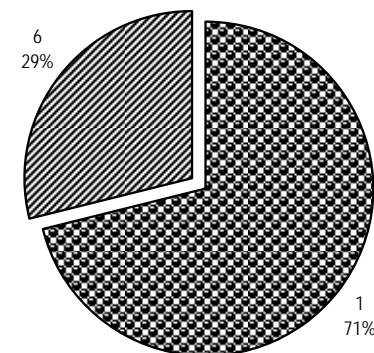
**Chart 2**

Share of traffic by type  
(percentage, 2005)



**Chart 3**

Share of traffic by region of partner  
(percentage, 2005)

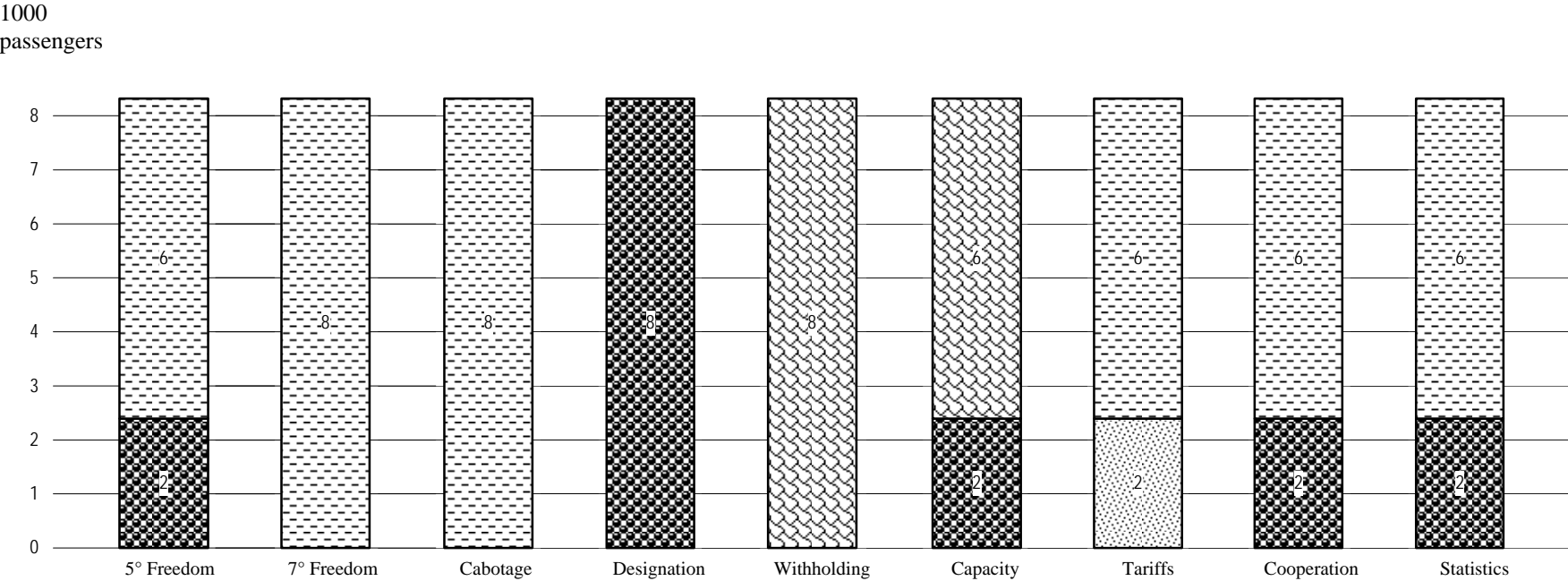


1 Africa; 2 Asia and Oceania;  
3 Commonwealth of Independent States;  
4 Europe; 5 Middle East; 6 North America;  
7 South and Central America and the Caribbean

NAMIBIA

Chart 4

Distribution of traffic by feature of bilateral Air Services Agreements (thousand passengers, 2005)



5° Freedom, 7° Freedom, Cabotage,  
Designation, Cooperation, Statistics

- With
- Without

Withholding

- Principal Place of Business
- Community of Interest
- Substantial Ownership and Effective Control
- Undetermined

Capacity

- Free Determination
- Bermuda I
- Pre-Determination
- Undetermined

Tariffs

- Free Pricing
- Zone Pricing
- Double Disapproval
- Country of Origin
- Double Approval
- Undetermined

## NAMIBIA

**Table 2**

Bilateral Air Services Agreements recorded by ICAO, selected indicators (2005)

Party	Date	Direct Services	ALI Standard	ALI 5th+	ALI OWN+	ALI DES+	Type	Distance (km)	Traffic Range (passengers)
BOTSWANA	26/09/1990	Yes	4	3.5	3.5	7.5	B	931	1-500000
UNITED STATES	04/02/2000	No	28	31.0	24.0	29.5	G	11720	1-500000
GAMBIA	20/06/2000	No	4	3.5	3.5	7.5	B	5443	<1

**Table 3**

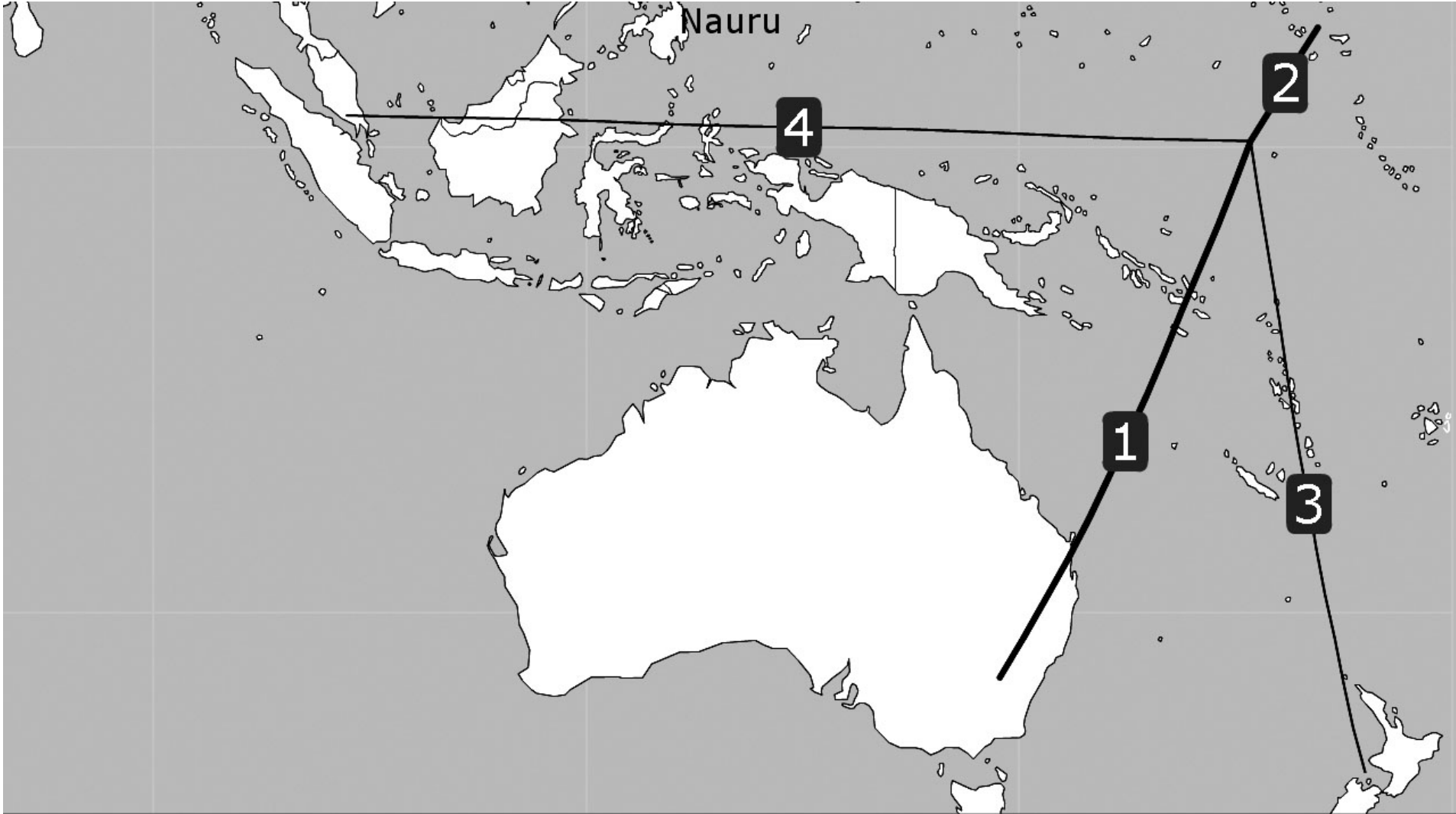
Direct air transportation services (passengers) not covered by a bilateral Air Services Agreement as recorded by ICAO (2005)

Countries or Territories	Traffic range
South Africa	1-500000
Germany	1-500000
Angola	1-500000

Countries or Territories	Traffic range
Zimbabwe	1-500000
United Kingdom	...

**NAURU**

NAURU





# NAURU

**Table 1**  
Selected indicators

STATISTICAL DATA						POLICY DATA			
General (2004)		Trade (2004)		Air transport (2004)		Trade (2006)		Air Transport (2005)	
Population (million)	...	Total trade (million US\$)	...	WASA traffic (passengers) (2005)	17,182	Final bound MFN tariffs (%)	-	Traffic weighted average ALI (Standard)	20.3
Share in world population (%)	...	Share in world trade (%)	...	Share of total WASA traffic (%) (2005)	0.00	Services sectors committed (out of ~160)	-	Traffic weighted average ALI (5th+)	24.4
GDP (million current US\$)	...	Trade per capita (US\$)	...	Number of planes (of which, in parenthesis, jets) (2005)	0	Tourism and travel-related services sectors committed (out of 3)	-	Traffic weighted average ALI (OWN+)	20.7
Share in world GDP (%)	...	Trade to GDP ratio (%)	...	Number of international airports (2005)	1	Services auxiliary to all modes of transport committed (out of 4)	-	Traffic weighted average ALI (DES+)	20.5
GDP per capita (current US\$)	...	Commercial services trade (million US\$)	...	Domestic traffic (passengers) (2005)	0	Air transport services sectors committed (out of 4)	-	Dispersion of ALI (standard)	6-37
Size (km²)	...	Share in world commercial services trade (%)	...	Air transport services (million US\$)	...	MFN exemptions on air transport services	-	National ownership regime (2004)	...
Density (pop. by km²)	...	Travel services (million US\$)	...	Passenger air transport services (million US\$)	...	Number of bilateral FTAs	0	Number of bilateral ASAs recorded by ICAO	4
				Freight air transport services (million US\$)	...	Number of regional FTAs	2	Number of plurilateral ASAs recorded by ICAO (2006)	1

NAURU

Chart 1

Share of traffic by ALI range  
(percentage, 2005)

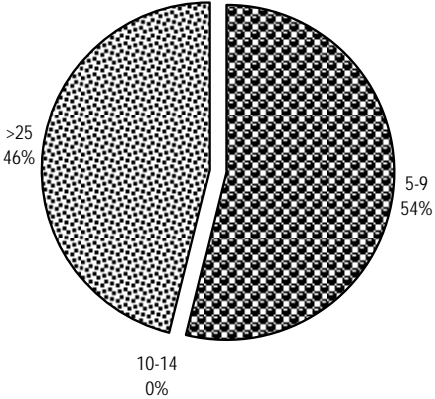


Chart 2

Share of traffic by type  
(percentage, 2005)

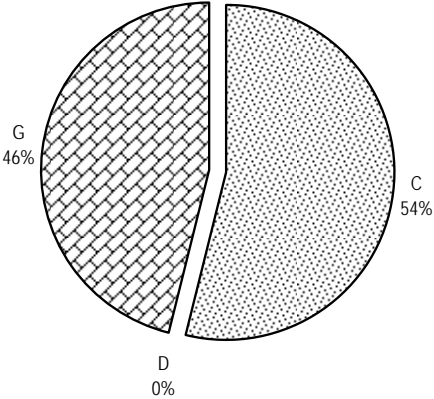
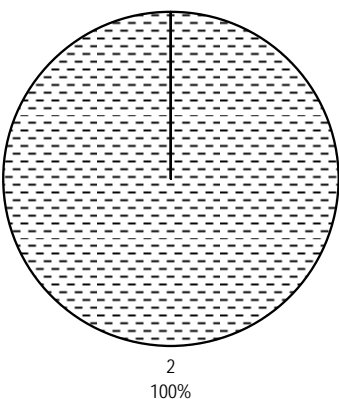


Chart 3

Share of traffic by region of partner  
(percentage, 2005)

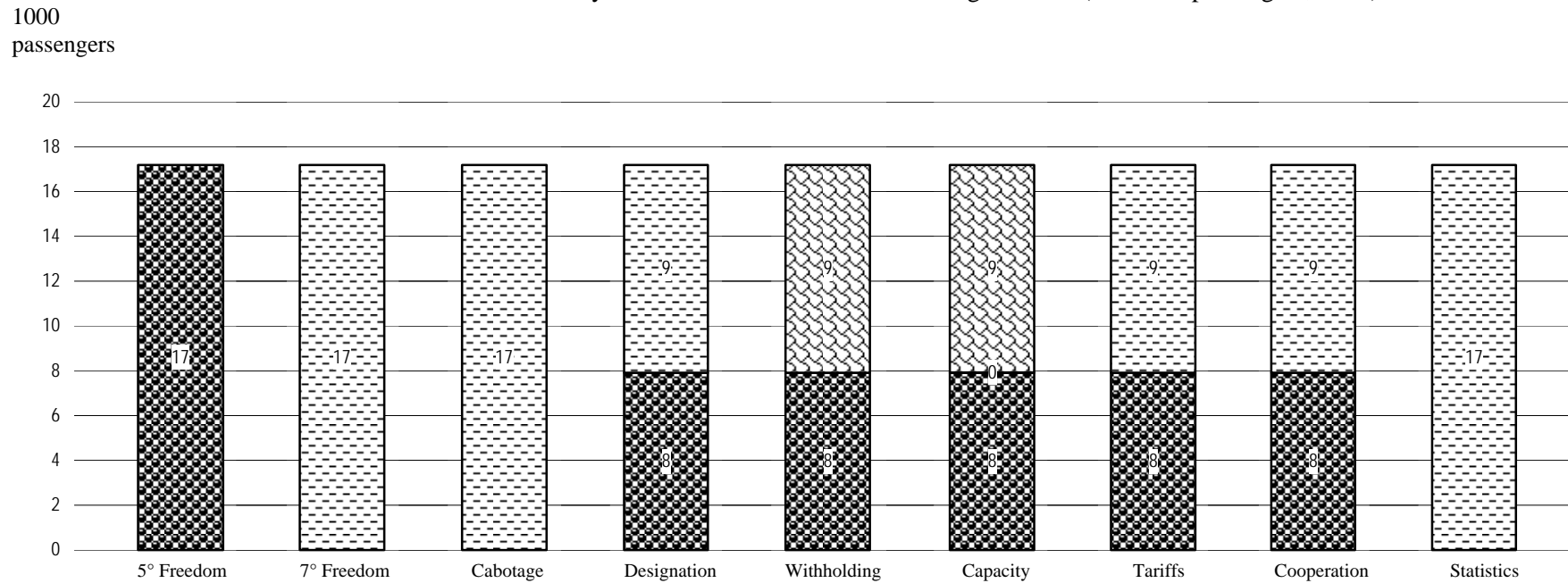


1 Africa; 2 Asia and Oceania;  
3 Commonwealth of Independent States;  
4 Europe; 5 Middle East; 6 North America;  
7 South and Central America and the Caribbean

# NAURU

**Chart 4**

Distribution of traffic by feature of bilateral Air Services Agreements (thousand passengers, 2005)



**5° Freedom, 7° Freedom, Cabotage,  
Designation, Cooperation, Statistics**



With



Without

**Withholding**



Principal Place of Business



Community of Interest



Substantial Ownership  
and Effective Control



Undetermined

**Capacity**



Free Determination



Bermuda I



Pre-Determination



Undetermined

**Tariffs**



Free Pricing



Zone Pricing



Double Disapproval



Country of Origin



Double Approval



Undetermined

## NAURU

**Table 2**  
Bilateral Air Services Agreements recorded by ICAO, selected indicators (2005)

Party	Date	Direct Services	ALI Standard	ALI 5th+	ALI OWN+	ALI DES+	Type	Distance (km)	Traffic Range (passengers)
AUSTRALIA	17/09/1969	Yes	6	12.0	5.0	5.5	C	4059	1-500000
MARSHALL ISLANDS	15/07/2004	Yes	37	39.0	39.0	38.0	G	978	1-500000
SINGAPORE	29/04/1980	No	10	15.5	8.5	9.0	D	7022	1-500000
NEW ZEALAND	05/08/1980	No	10	15.5	8.5	9.0	D	4931	1-500000

**Table 3**  
Direct air transportation services (passengers) not covered by a bilateral Air Services Agreement as recorded by ICAO (2005)

Countries or Territories	Traffic range
Solomon Islands	1-500000
Kiribati	1-500000

Countries or Territories	Traffic range
Fiji	1-500000