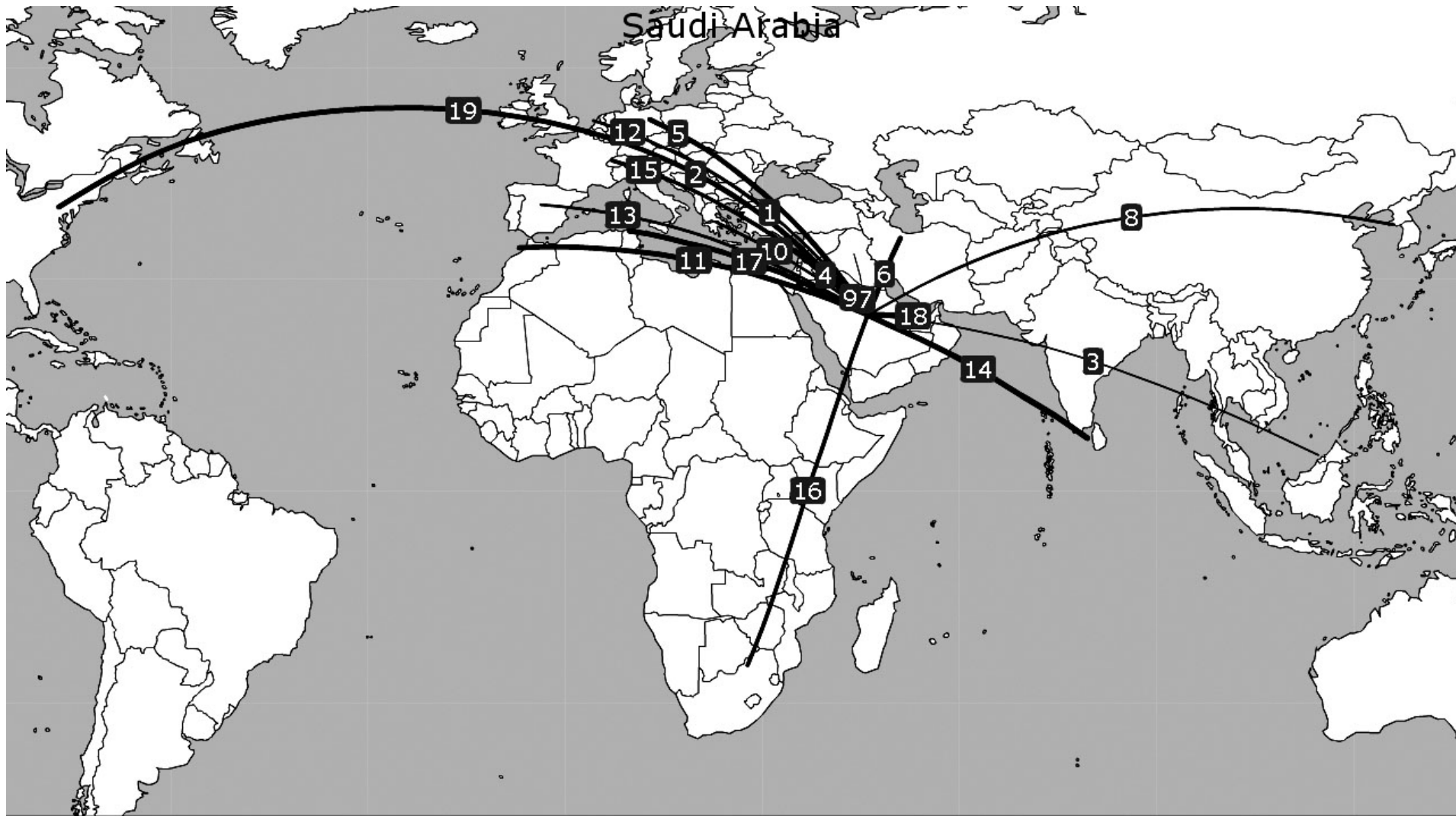


SAUDI ARABIA

SAUDI ARABIA



SAUDI ARABIA

Table 1
Selected indicators

STATISTICAL DATA						POLICY DATA			
General (2004)		Trade (2004)		Air transport (2004)		Trade (2006)		Air Transport (2005)	
Population (million)	23.95	Total trade (million US\$)	183,958	WASA traffic (passengers) (2005)	2,181,167	Final bound MFN tariffs (%)	10.7	Traffic weighted average ALI (Standard)	9.3
Share in world population (%)	0.38	Share in world trade (%)	0.82	Share of total WASA traffic (%) (2005)	0.31	Services sectors committed (out of ~160)	120	Traffic weighted average ALI (5th+)	13.7
GDP (million current US\$)	250,557	Trade per capita (US\$)	7,681	Number of planes (of which, in parenthesis, jets) (2005)	116 (112)	Tourism and travel-related services sectors committed (out of 3)	0	Traffic weighted average ALI (OWN+)	7.9
Share in world GDP (%)	0.61	Trade to GDP ratio (%)	73.4	Number of international airports (2005)	4	Services auxiliary to all modes of transport committed (out of 4)	0	Traffic weighted average ALI (DES+)	11.8
GDP per capita (current US\$)	10,462	Commercial services trade (million US\$)	16,909	Domestic traffic (passengers) (2005)	10,394,787	Air transport services sectors committed (out of 4)	CRS; Maint; Other ¹	Dispersion of ALI (standard)	0-16
Size (km ²)	2,149,690	Share in world commercial services trade (%)	0.39	Air transport services (million US\$)	...	MFN exemptions on air transport services	0	National ownership regime (2004)	...
Density (pop. by km ²)	11	Travel services (million US\$)	...	Passenger air transport services (million US\$)	...	Number of bilateral FTAs	1	Number of bilateral ASAs recorded by ICAO	19
				Freight air transport services (million US\$)	...	Number of regional FTAs	2	Number of plurilateral ASAs recorded by ICAO (2006)	1

¹ Supporting services for air transport (CPC 746).

SAUDI ARABIA

Chart 1

Share of traffic by ALI range
(percentage, 2005)

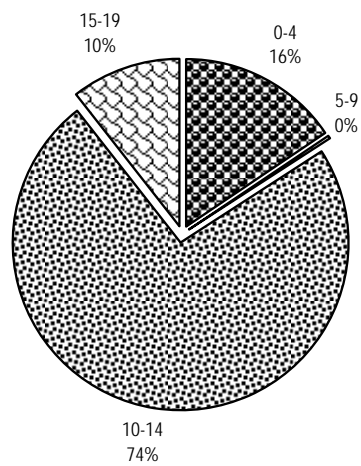


Chart 2

Share of traffic by type
(percentage, 2005)

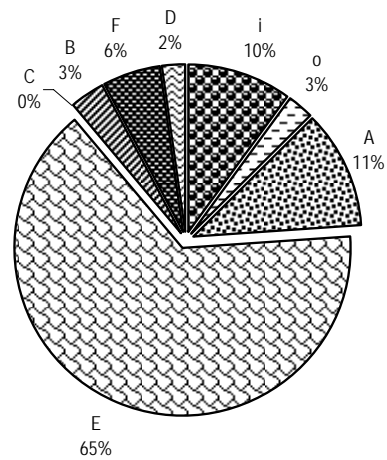
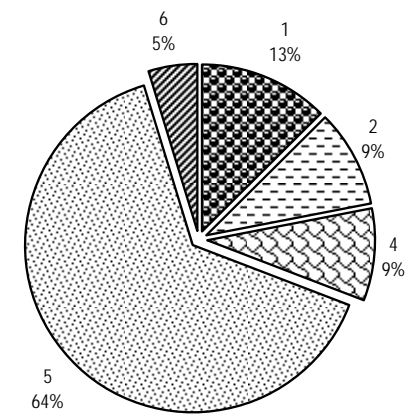


Chart 3

Share of traffic by region of partner
(percentage, 2005)

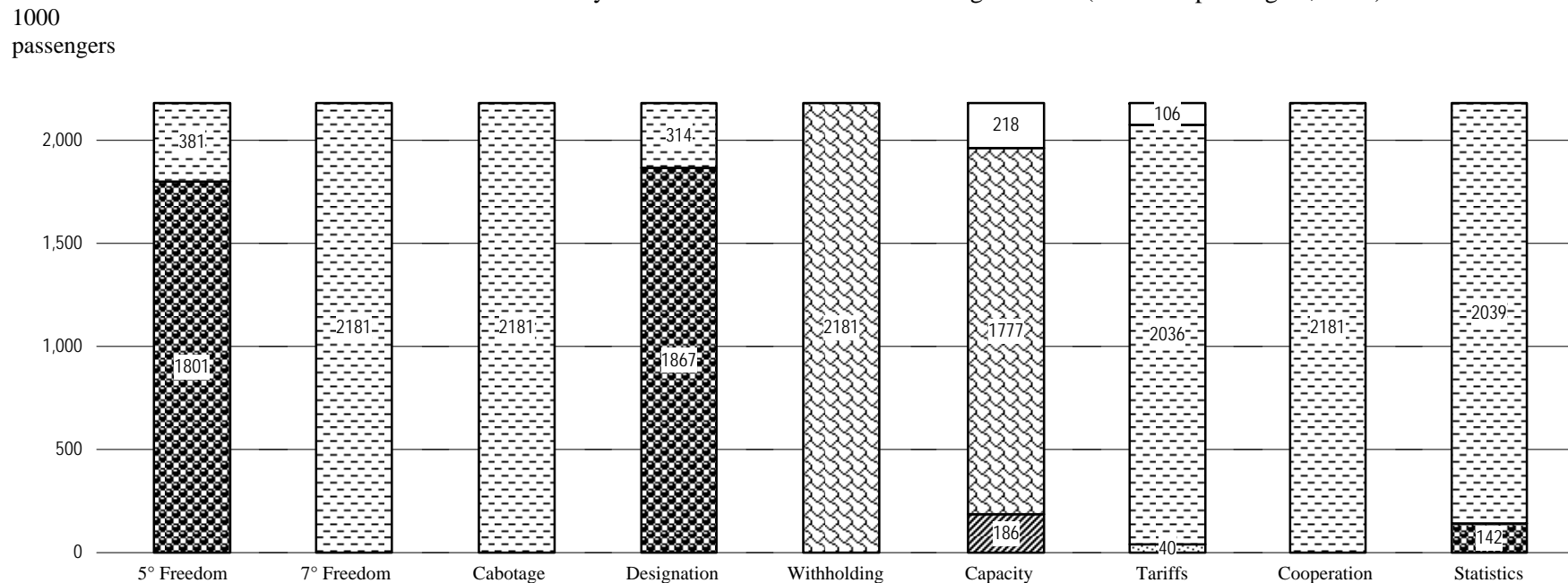


1 Africa; 2 Asia and Oceania;
3 Commonwealth of Independent States;
4 Europe; 5 Middle East; 6 North America;
7 South and Central America and the Caribbean

SAUDI ARABIA

Chart 4

Distribution of traffic by feature of bilateral Air Services Agreements (thousand passengers, 2005)



5° Freedom, 7° Freedom, Cabotage, Designation, Cooperation, Statistics

- With
- Without

Withholding

- Principal Place of Business
- Community of Interest
- Substantial Ownership and Effective Control
- Undetermined

Capacity

- Free Determination
- Bermuda I
- Pre-Determination
- Undetermined

Tariffs

- Free Pricing
- Zone Pricing
- Double Disapproval
- Country of Origin
- Double Approval
- Undetermined

SAUDI ARABIA

Table 2
Bilateral Air Services Agreements recorded by ICAO, selected indicators (2005)

Party	Date	Direct Services	ALI Standard	ALI 5th+	ALI OWN+	ALI DES+	Type	Distance (km)	Traffic Range (passengers)
UNITED ARAB EMIRATES	25/09/1991	Yes	10	15.5	8.5	13.0	E	775	500001-1000000
LEBANON	14/01/1961	Yes	10	15.5	8.5	13.0	E	1498	1-500000
SRI LANKA	08/06/1991	Yes	0	0.0	0.0	0.0	A	4039	1-500000
MOROCCO	07/03/1976	Yes	15	20.0	13.0	17.5	F	5247	1-500000
TUNISIA	12/03/1969	Yes	12	17.0	10.0	14.5	i	3722	1-500000
UNITED STATES	02/10/1993	Yes	16	20.5	13.5	18.5	i	10527	1-500000
GERMANY	19/09/1973	Yes	10	15.5	8.5	13.0	E	4498	1-500000
IRAN, ISLAMIC REP. OF	02/05/1999	Yes	4	3.5	3.5	7.5	B	1305	1-500000
SOUTH AFRICA	28/05/2000	Yes	10	8.5	8.5	13.0	o	7174	1-500000
SWITZERLAND	09/06/1965	Yes	10	15.5	8.5	9.0	D	4264	1-500000
NETHERLANDS	13/02/1985	Yes	1	1.0	1.0	1.0	A	4670	1-500000
SPAIN	29/09/1987	No	0	0.0	0.0	0.0	A	4976	1-500000
AUSTRIA	13/06/1989	No	0	0.0	0.0	0.0	A	3735	1-500000
GREECE	23/05/1989	No	4	3.5	3.5	3.5	o	2634	1-500000
BELGIUM	13/04/1986	No	4	3.5	3.5	3.5	o	4636	1-500000
CYPRUS	22/04/2002	Yes	0	0.0	0.0	0.0	A	1741	1-500000
KOREA, REPUBLIC OF	12/11/1976	No	10	15.5	8.5	9.0	D	7557	1-500000
BRUNEI DARUSSALAM	09/02/1992	Yes	6	12.0	5.0	5.5	C	7585	1-500000
IRAQ	16/05/1957	No	10	15.5	8.5	13.0	E	993	1-500000

SAUDI ARABIA

Table 3

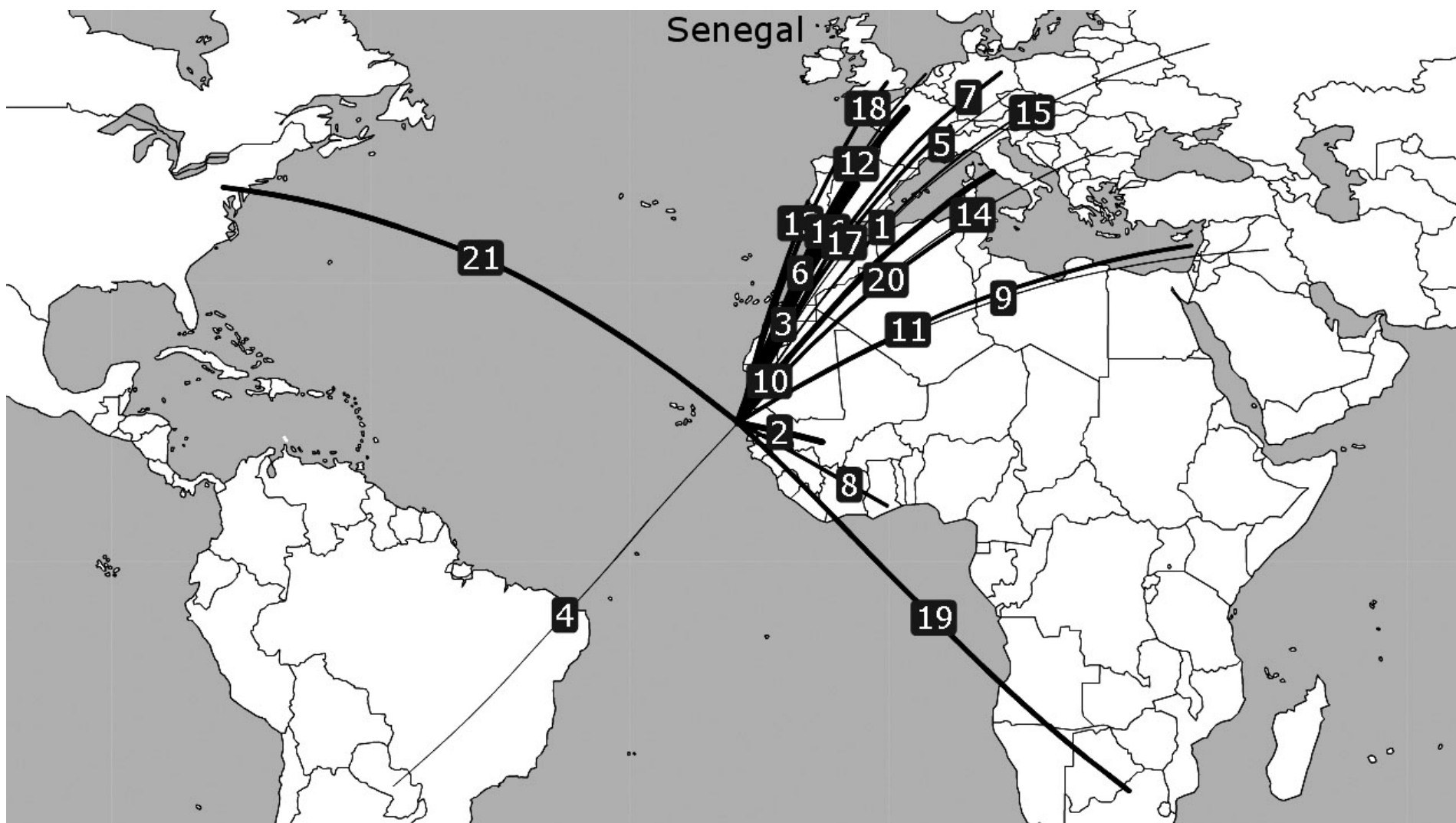
Direct air transportation services (passengers) not covered by a bilateral Air Services Agreement as recorded by ICAO (2005)

Countries or territories	Traffic range
India	500001-1000000
Egypt	500001-1000000
Pakistan	500001-1000000
Bangladesh	1-500000
Indonesia	1-500000
Philippines	1-500000
Syrian Arab Republic	1-500000
Sudan	1-500000
Kuwait	1-500000
Jordan	1-500000
Malaysia	1-500000
Yemen	1-500000
Turkey	1-500000
Qatar	1-500000
Bahrain	1-500000
France	1-500000
Ethiopia	1-500000

Countries or territories	Traffic range
Nepal	1-500000
Nigeria	1-500000
Italy	1-500000
Oman	1-500000
Eritrea	1-500000
Singapore	1-500000
Kenya	1-500000
Algeria	1-500000
Hong Kong, China	1-500000
Afghanistan	1-500000
Libyan Arab Jamahiriya	1-500000
Senegal	1-500000
Somalia	1-500000
Djibouti	1-500000
Argentina	1-500000
United Kingdom	...

SENEGAL

Senegal



SENEGAL

Table 1
Selected indicators

STATISTICAL DATA						POLICY DATA			
General (2004)		Trade (2004)		Air transport (2004)		Trade (2006)		Air Transport (2005)	
Population (million)	11.39	Total trade (million US\$)	5,285	WASA traffic (passengers) (2005)	840,799	Final bound MFN tariffs (%)	30.0	Traffic weighted average ALI (Standard)	8.1
Share in world population (%)	0.18	Share in world trade (%)	0.02	Share of total WASA traffic (%) (2005)	0.12	Services sectors committed (out of ~160)	29	Traffic weighted average ALI (5th+)	11.8
GDP (million current US\$)	7,775	Trade per capita (US\$)	464	Number of planes (of which, in parenthesis, jets) (2005)	7 (4)	Tourism and travel-related services sectors committed (out of 3)	2	Traffic weighted average ALI (OWN+)	7.0
Share in world GDP (%)	0.02	Trade to GDP ratio (%)	68.0	Number of international airports (2005)	1	Services auxiliary to all modes of transport committed (out of 4)	0	Traffic weighted average ALI (DES+)	9.8
GDP per capita (current US\$)	683	Commercial services trade (million US\$)	1,280	Domestic traffic (passengers) (2005)	40,838	Air transport services sectors committed (out of 4)	0	Dispersion of ALI (standard)	0-34
Size (km²)	192,530	Share in world commercial services trade (%)	0.03	Air transport services (million US\$)	155 (2003)	MFN exemptions on air transport services	0	National ownership regime (2004)	...
Density (pop. by km²)	59	Travel services (million US\$)	268	Passenger air transport services (million US\$)	124 (2003)	Number of bilateral FTAs	1	Number of bilateral ASAs recorded by ICAO	21
				Freight air transport services (million US\$)	9 (2003)	Number of regional FTAs	2	Number of plurilateral ASAs recorded by ICAO (2006)	2

SENEGAL

Chart 1

Share of traffic by ALI range
(percentage, 2005)

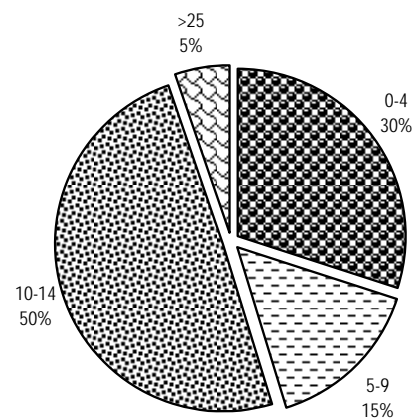


Chart 2

Share of traffic by type
(percentage, 2005)

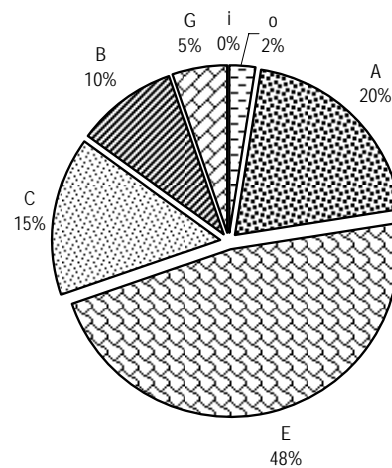
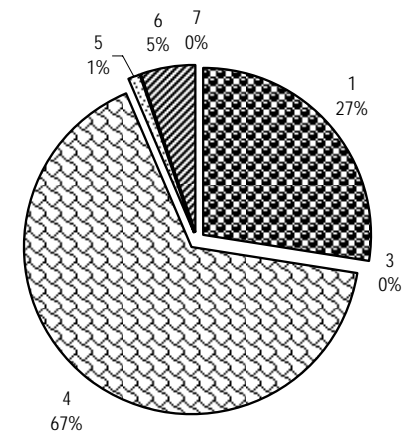


Chart 3

Share of traffic by region of partner
(percentage, 2005)

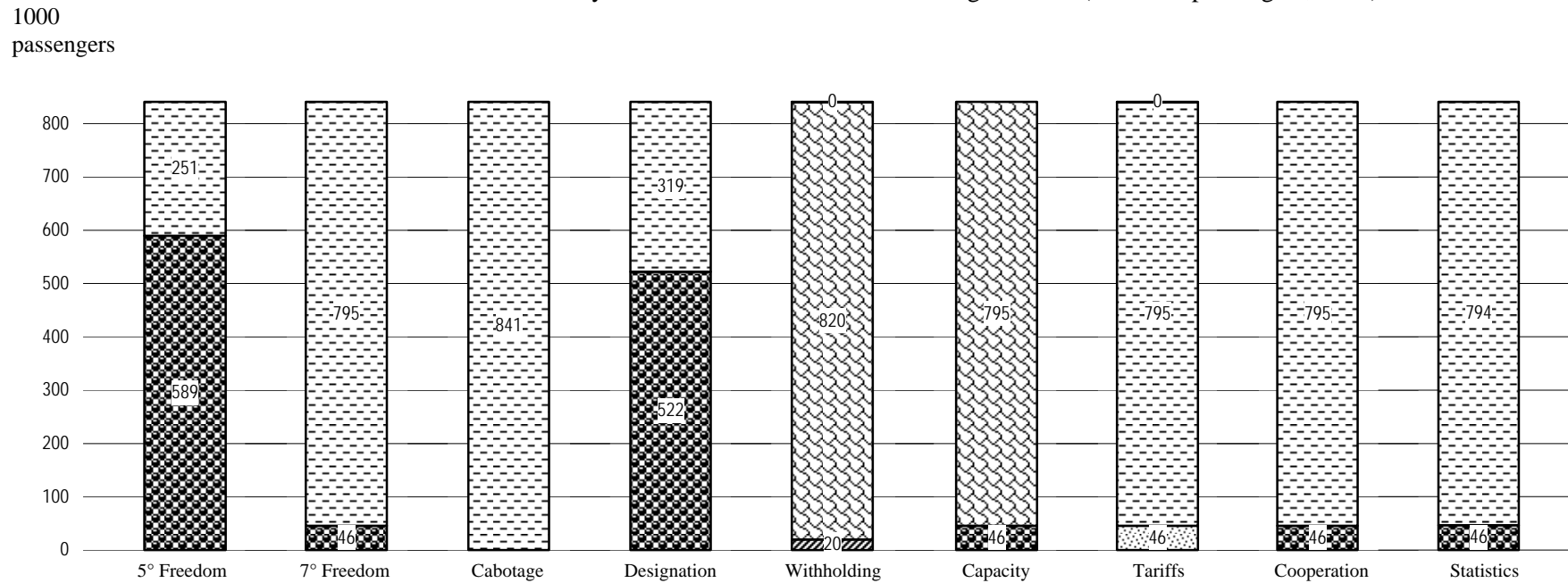


1 Africa; 2 Asia and Oceania;
3 Commonwealth of Independent States;
4 Europe; 5 Middle East; 6 North America;
7 South and Central America and the Caribbean

SENEGAL

Chart 4

Distribution of traffic by feature of bilateral Air Services Agreements (thousand passengers, 2005)



5° Freedom, 7° Freedom, Cabotage,
Designation, Cooperation, Statistics

With
Without

Withholding

Principal Place of Business
Community of Interest
Substantial Ownership
and Effective Control
Undetermined

Capacity

Free Determination
Bermuda I
Pre-Determination
Undetermined

Tariffs

Free Pricing
Zone Pricing
Double Disapproval
Country of Origin
Double Approval
Undetermined

SENEGAL

Table 2
Bilateral Air Services Agreements recorded by ICAO, selected indicators (2005)

Party	Date	Direct Services	ALI Standard	ALI 5th+	ALI OWN+	ALI DES+	Type	Distance (km)	Traffic Range (passengers)
FRANCE	15/06/1962	Yes	10	15.5	8.5	13.0	E	4217	1-500000
MALI	07/02/1963	Yes	0	0.0	0.0	0.0	A	1047	1-500000
ITALY	20/04/1972	Yes	6	12.0	5.0	5.5	C	4179	1-500000
SPAIN	26/08/1968	Yes	4	3.5	3.5	7.5	B	3164	1-500000
UNITED STATES	11/01/2001	Yes	34	36.0	29.0	35.0	G	6157	1-500000
MOROCCO	03/07/1967	Yes	10	15.5	8.5	13.0	E	2408	1-500000
SOUTH AFRICA	30/07/1996	Yes	10	15.5	12.0	9.0	o	6611	1-500000
GERMANY	29/10/1964	Yes	10	15.5	8.5	13.0	E	4643	1-500000
SWITZERLAND	23/01/1963	No	6	12.0	5.0	5.5	C	4273	1-500000
PORTUGAL	21/02/1977	Yes	0	0.0	0.0	0.0	A	2804	1-500000
TUNISIA	25/03/1966	Yes	4	3.5	3.5	7.5	B	3689	1-500000
GHANA	20/02/1964	Yes	6	12.0	5.0	5.5	C	2137	1-500000
LEBANON	27/12/1966	No	10	15.5	8.5	13.0	E	5713	1-500000
UNITED KINGDOM	20/05/1974	No	4	3.5	3.5	7.5	B	4384	1-500000
NETHERLANDS	27/07/1977	No	6	12.0	5.0	5.5	C	4641	1-500000
AUSTRIA	04/02/1987	No	0	0.0	0.0	0.0	A	4854	1-500000
RUSSIAN FEDERATION	31/07/1965	No	1	1.0	1.0	1.0	A	6530	1-500000
CZECH REPUBLIC	20/06/1962	No	10	15.5	8.5	13.0	E	4884	1-500000
ROMANIA	25/02/1977	No	1	1.0	1.0	1.0	i	5270	1-500000
PARAGUAY	19/09/1988	No	0	0.0	0.0	0.0	A	6223	1-500000
IRAQ	08/08/1979	No	10	15.5	8.5	13.0	E	6531	<1

SENEGAL

Table 3

Direct air transportation services (passengers) not covered by a bilateral Air Services Agreement as recorded by ICAO (2005)

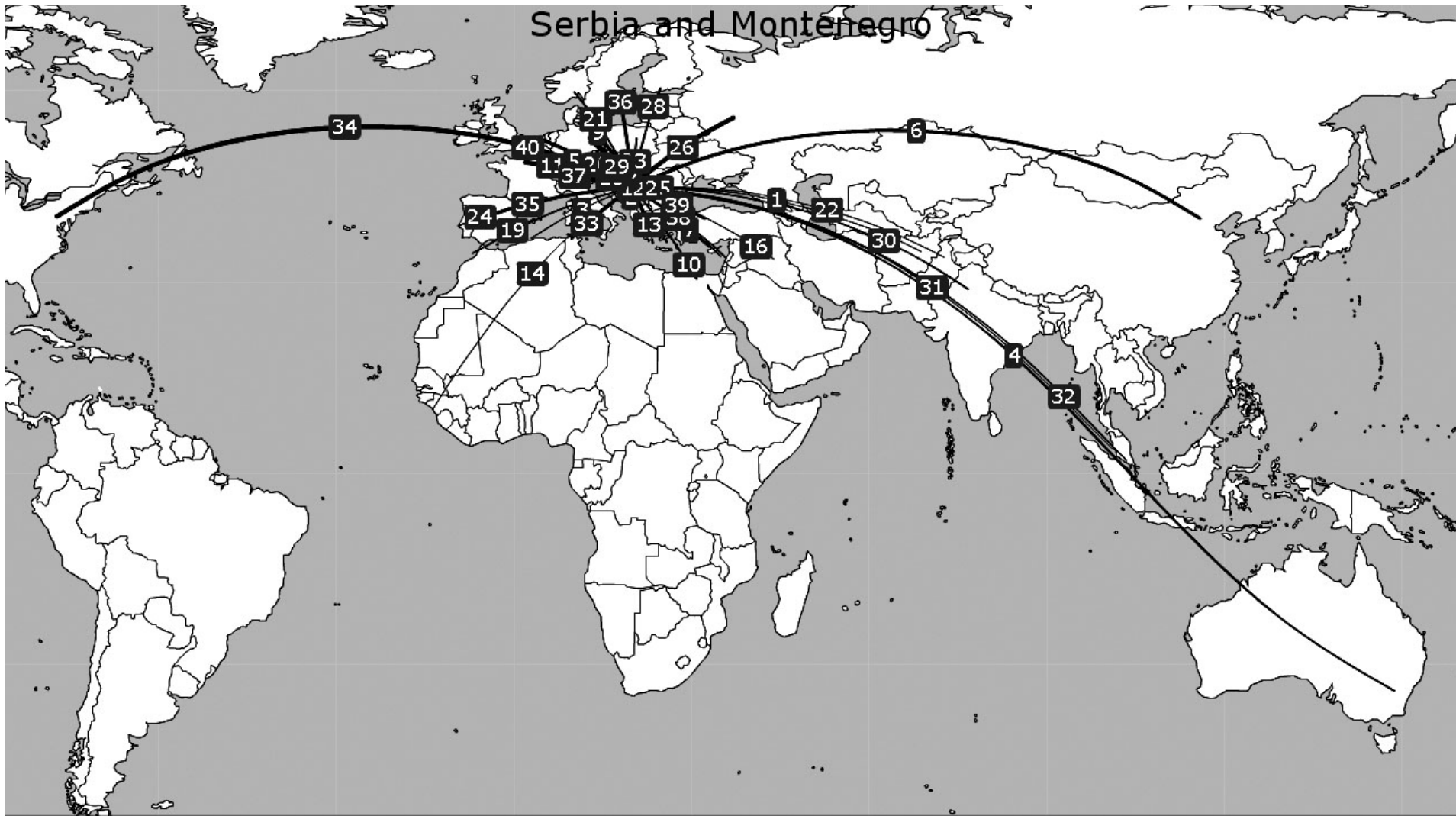
Countries or territories	Traffic range
Guinea	1-500000
Gambia	1-500000
Côte d'Ivoire	1-500000
Belgium	1-500000
Mauritania	1-500000
Guinea-Bissau	1-500000
Burkina Faso	1-500000
Cape Verde	1-500000
Benin	1-500000
Nigeria	1-500000
Niger	1-500000
Togo	1-500000

Countries or territories	Traffic range
Sierra Leone	1-500000
Algeria	1-500000
Cameroon	1-500000
Gabon	1-500000
Saudi Arabia	1-500000
Kenya	1-500000
Liberia	1-500000
Libyan Arab Jamahiriya	1-500000
Congo	1-500000
Ethiopia	1-500000
Chad	1-500000

SERBIA AND MONTENEGRO

SERBIA AND MONTENEGRO

Serbia and Montenegro



SERBIA AND MONTENEGRO

Table 1
Selected indicators

STATISTICAL DATA						POLICY DATA			
General (2004)		Trade (2004)		Air transport (2004)		Trade (2006)		Air Transport (2005)	
Population (million)	8.15	Total trade (million US\$)	18,742	WASA traffic (passengers) (2005)	1,743,274	Final bound MFN tariffs (%)	-	Traffic weighted average ALI (Standard)	8.2
Share in world population (%)	0.13	Share in world trade (%)	0.08	Share of total WASA traffic (%) (2005)	0.25	Services sectors committed (out of ~160)	-	Traffic weighted average ALI (5th+)	13.4
GDP (million current US\$)	23,997	Trade per capita (US\$)	2,301	Number of planes (of which, in parenthesis, jets) (2005)	38 (32)	Tourism and travel-related services sectors committed (out of 3)	-	Traffic weighted average ALI (OWN+)	7.0
Share in world GDP (%)	0.06	Trade to GDP ratio (%)	78.1	Number of international airports (2005)	...	Services auxiliary to all modes of transport committed (out of 4)	-	Traffic weighted average ALI (DES+)	9.8
GDP per capita (current US\$)	2,946	Commercial services trade (million US\$)	2,870	Domestic traffic (passengers) (2005)	425,034	Air transport services sectors committed (out of 4)	-	Dispersion of ALI (standard)	0-14
Size (km²)	102,000	Share in world commercial services trade (%)	0.07	Air transport services (million US\$)	...	MFN exemptions on air transport services	-	National ownership regime (2004)	...
Density (pop. by km²)	80	Travel services (million US\$)	...	Passenger air transport services (million US\$)	...	Number of bilateral FTAs	7	Number of bilateral ASAs recorded by ICAO	40
				Freight air transport services (million US\$)	...	Number of regional FTAs	3	Number of plurilateral ASAs recorded by ICAO (2006)	1

SERBIA AND MONTENEGRO

Chart 1

Share of traffic by ALI range
(percentage, 2005)

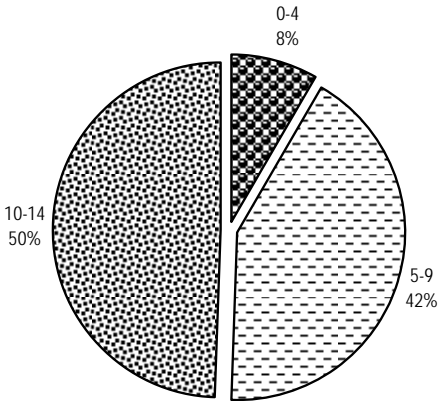


Chart 2

Share of traffic by type
(percentage, 2005)

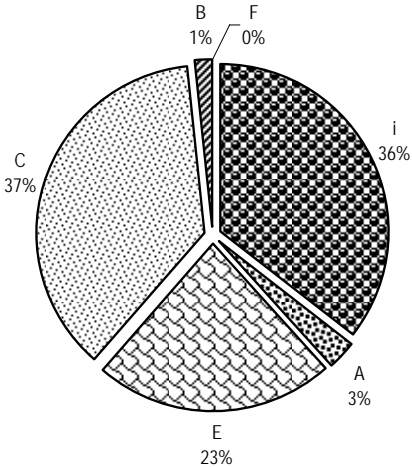
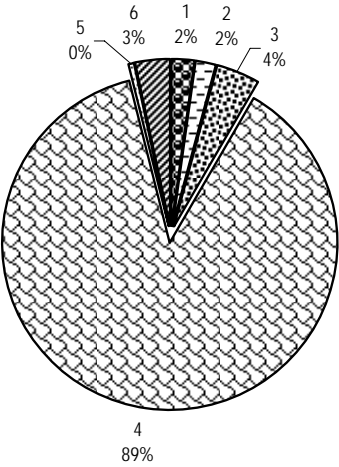


Chart 3

Share of traffic by region of partner
(percentage, 2005)

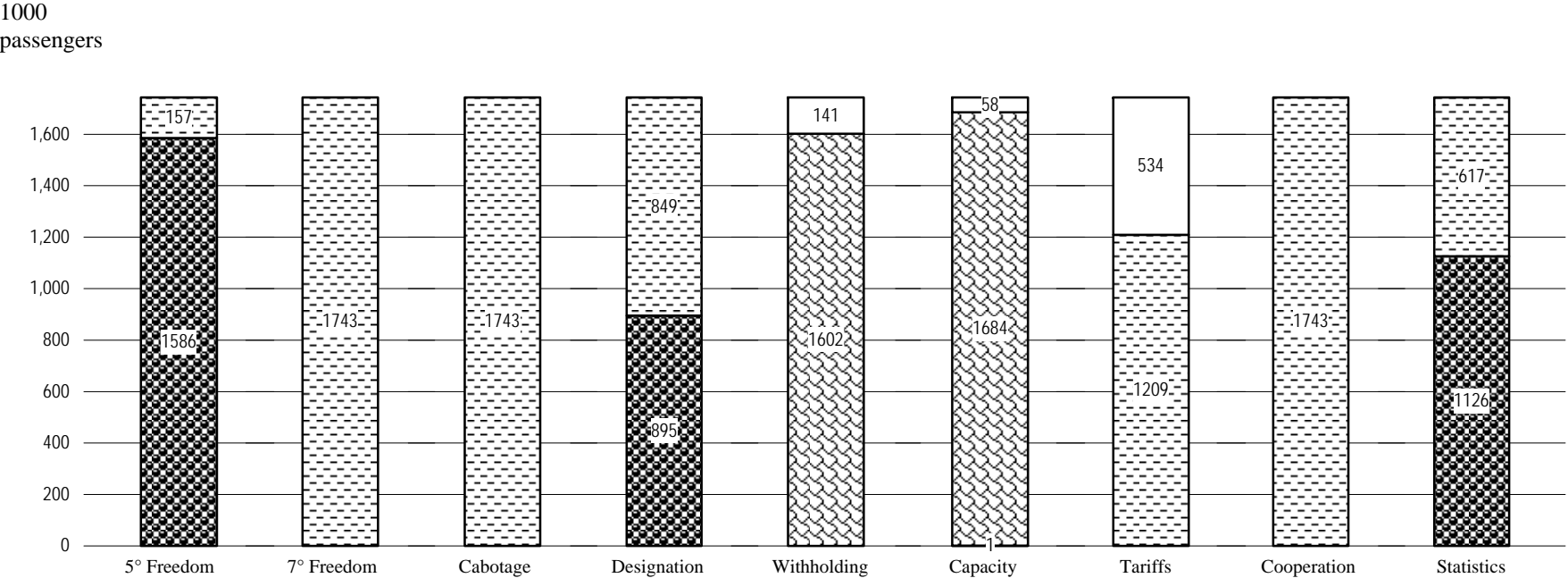


1 Africa; 2 Asia and Oceania;
3 Commonwealth of Independent States;
4 Europe; 5 Middle East; 6 North America;
7 South and Central America and the Caribbean

SERBIA AND MONTENEGRO

Chart 4

Distribution of traffic by feature of bilateral Air Services Agreements (thousand passengers, 2005)



5° Freedom, 7° Freedom, Cabotage,
Designation, Cooperation, Statistics

- With
- Without

Withholding

- Principal Place of Business
- Community of Interest
- Substantial Ownership
and Effective Control
- Undetermined

Capacity

- Free Determination
- Bermuda I
- Pre-Determination
- Undetermined

Tariffs

- Free Pricing
- Zone Pricing
- Double Disapproval
- Country of Origin
- Double Approval
- Undetermined

SERBIA AND MONTENEGRO

Table 2
Bilateral Air Services Agreements recorded by ICAO, selected indicators (2005)

Party	Date	Direct Services	ALI Standard	ALI 5th+	ALI OWN+	ALI DES+	Type	Distance (km)	Traffic Range (passengers)
SWITZERLAND	26/10/1977	No	6	12.0	5.0	5.5	C	1038	1-500000
GERMANY	06/02/1960	No	11	16.5	9.5	14.0	i	1243	1-500000
UNITED KINGDOM	03/02/1959	No	10	15.5	8.5	13.0	E	1696	1-500000
AUSTRIA	11/11/1953	No	7	13.0	6.0	6.5	C	492	1-500000
FRANCE	23/03/1967	No	11	16.5	9.5	14.0	E	1450	1-500000
RUSSIAN FEDERATION	03/09/1955	No	7	13.0	6.0	6.5	i	1715	1-500000
UNITED STATES	15/12/1977	No	7	13.0	6.0	6.5	C	7266	1-500000
ALBANIA	23/11/1956	No	1	1.0	1.0	1.0	i	393	1-500000
TURKEY	16/04/1953	No	11	16.5	9.5	14.0	E	807	1-500000
DENMARK	11/02/1964	No	11	16.5	9.5	14.0	i	1329	1-500000
SWEDEN	18/04/1958	No	11	16.5	9.5	14.0	i	1622	1-500000
GREECE	15/03/1951	No	7	13.0	6.0	6.5	C	807	1-500000
NETHERLANDS	13/03/1957	No	13	18.0	11.0	15.5	i	1416	1-500000
CZECH REPUBLIC	14/03/1948	No	11	16.5	9.5	14.0	E	742	1-500000
SPAIN	11/04/1979	No	0	0.0	0.0	0.0	A	2035	1-500000
TUNISIA	18/11/1966	No	11	16.5	9.5	14.0	E	1240	1-500000
CHINA	14/04/1972	No	1	1.0	1.0	1.0	A	7419	1-500000
BELGIUM	24/09/1957	No	11	16.5	9.5	14.0	E	1375	1-500000
FYR MACEDONIA	04/09/1996	No	4	3.5	3.5	7.5	B	325	1-500000
CYPRUS	27/02/1976	No	7	13.0	6.0	6.5	C	1533	1-500000
HUNGARY	21/07/1956	No	1	1.0	1.0	1.0	i	317	1-500000
NORWAY	15/04/1964	No	11	16.5	9.5	14.0	i	1800	1-500000
EGYPT	20/02/1955	No	12	17.0	10.0	14.5	i	1896	1-500000
AUSTRALIA	03/04/1975	No	6	12.0	5.0	5.5	C	15689	1-500000
POLAND	14/11/1955	No	7	13.0	6.0	6.5	i	826	1-500000

SERBIA AND MONTENEGRO

Party	Date	Direct Services	ALI Standard	ALI 5th+	ALI OWN+	ALI DES+	Type	Distance (km)	Traffic Range (passengers)
FINLAND	18/01/1968	No	5	4.5	4.5	8.5	i	1729	1-500000
PORTUGAL	03/06/1976	No	6	12.0	5.0	5.5	C	2536	1-500000
LEBANON	17/04/1954	No	13	18.0	11.0	15.5	i	1771	1-500000
SYRIAN ARAB REPUBLIC	17/07/1966	No	11	16.5	9.5	14.0	E	1852	1-500000
ROMANIA	01/02/1956	No	7	13.0	6.0	6.5	i	447	1-500000
INDIA	31/01/2003	No	4	3.5	3.5	7.5	B	5254	1-500000
LUXEMBOURG	09/04/1960	No	5	4.5	4.5	8.5	i	1205	1-500000
MOROCCO	03/02/1964	No	4	3.5	3.5	7.5	B	2623	1-500000
SINGAPORE	10/12/1971	No	14	19.0	12.0	16.5	F	9392	1-500000
ALGERIA	16/10/1964	No	5	4.5	4.5	8.5	B	1716	1-500000
PAKISTAN	15/04/1976	No	6	12.0	5.0	5.5	C	4618	1-500000
MALAYSIA	20/06/1987	No	0	0.0	0.0	0.0	A	9077	1-500000
GUINEA	09/12/1961	No	11	16.5	9.5	14.0	E	5241	1-500000
AFGHANISTAN	07/01/1960	No	11	16.5	9.5	14.0	i	4259	1-500000
IRAQ	02/10/1975	No	6	12.0	5.0	5.5	C	2418	<1

SERBIA AND MONTENEGRO

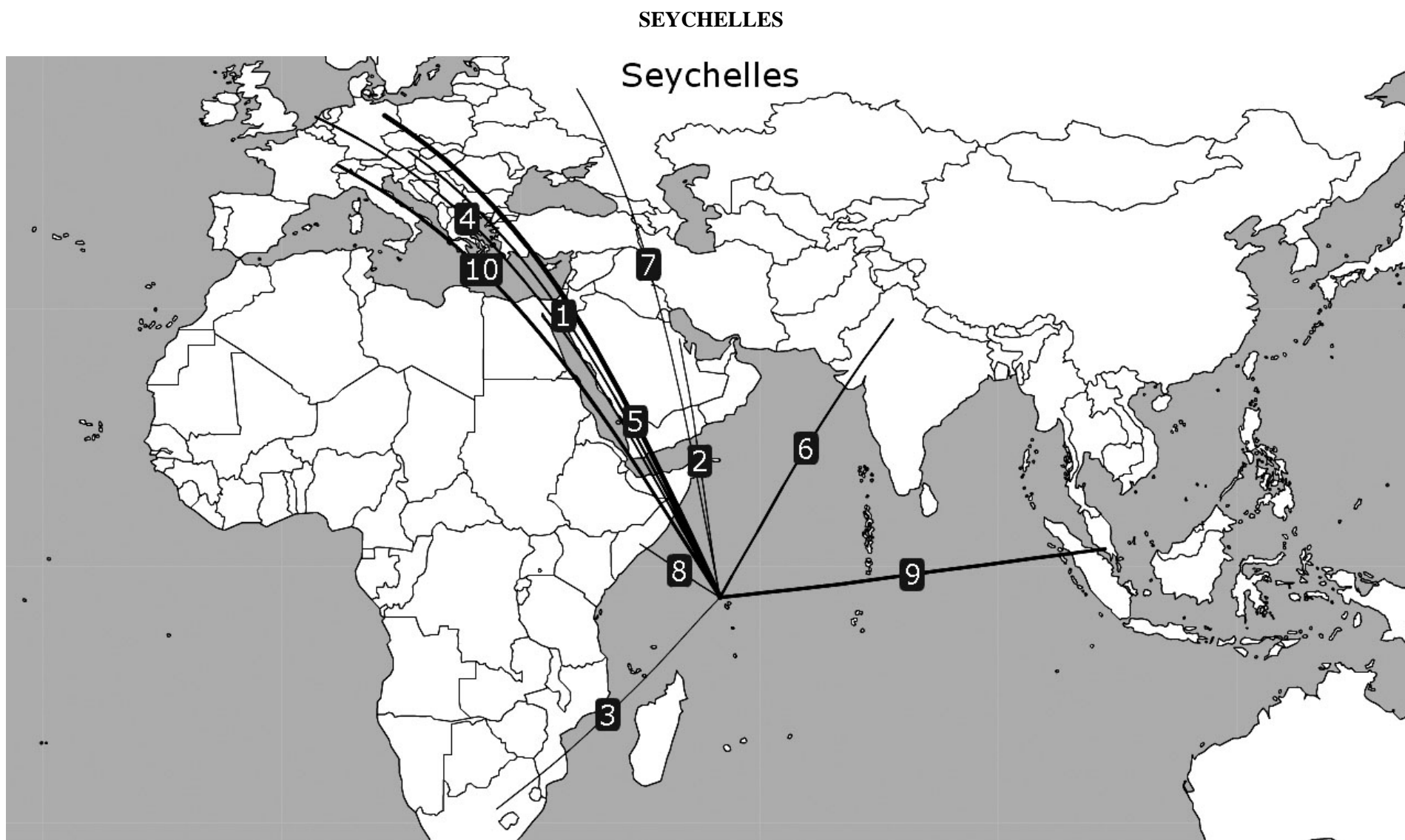
Table 3

Direct air transportation services (passengers) not covered by a bilateral Air Services Agreement as recorded by ICAO (2005)

Countries or territories	Traffic range
Switzerland	1-500000
Germany	1-500000
Italy	1-500000
Austria	1-500000
France	1-500000
Russian Federation	1-500000
Slovenia	1-500000
Albania	1-500000
Turkey	1-500000
Denmark	1-500000
Sweden	1-500000
Greece	1-500000
Netherlands	1-500000
Czech Republic	1-500000
Tunisia	1-500000

Countries or territories	Traffic range
Belgium	1-500000
Bosnia and Herzegovina	1-500000
FYR Macedonia	1-500000
Hungary	1-500000
Cyprus	1-500000
United Arab Emirates	1-500000
Israel	1-500000
Egypt	1-500000
Ukraine	1-500000
Kuwait	1-500000
Libyan Arab Jamahiriya	1-500000
Bulgaria	1-500000
Malta	1-500000
Lebanon	1-500000
United Kingdom	...

SEYCHELLES



SEYCHELLES

Table 1
Selected indicators

STATISTICAL DATA						POLICY DATA			
General (2004)		Trade (2004)		Air transport (2004)		Trade (2006)		Air Transport (2005)	
Population (million)	0.08	Total trade (million US\$)	1,231	WASA traffic (passengers) (2005)	60,589	Final bound MFN tariffs (%)	-	Traffic weighted average ALI (Standard)	3.7
Share in world population (%)	0.00	Share in world trade (%)	0.01	Share of total WASA traffic (%) (2005)	0.01	Services sectors committed (out of ~160)	-	Traffic weighted average ALI (5th+)	6.1
GDP (million current US\$)	704	Trade per capita (US\$)	14,722	Number of planes (of which, in parenthesis, jets) (2005)	17 (13)	Tourism and travel-related services sectors committed (out of 3)	-	Traffic weighted average ALI (OWN+)	3.1
Share in world GDP (%)	0.00	Trade to GDP ratio (%)	175.0	Number of international airports (2005)	1	Services auxiliary to all modes of transport committed (out of 4)	-	Traffic weighted average ALI (DES+)	3.4
GDP per capita (current US\$)	8,411	Commercial services trade (million US\$)	514	Domestic traffic (passengers) (2005)	268,619	Air transport services sectors committed (out of 4)	-	Dispersion of ALI (standard)	0-10
Size (km²)	460	Share in world commercial services trade (%)	0.01	Air transport services (million US\$)	102 (2002)	MFN exemptions on air transport services	-	National ownership regime (2004)	...
Density (pop. by km²)	182	Travel services (million US\$)	204	Passenger air transport services (million US\$)	91 (2002)	Number of bilateral FTAs	0	Number of bilateral ASAs recorded by ICAO	10
				Freight air transport services (million US\$)	...	Number of regional FTAs	1	Number of plurilateral ASAs recorded by ICAO (2006)	2

SEYCHELLES

Chart 1
Share of traffic by ALI range
(percentage, 2005)

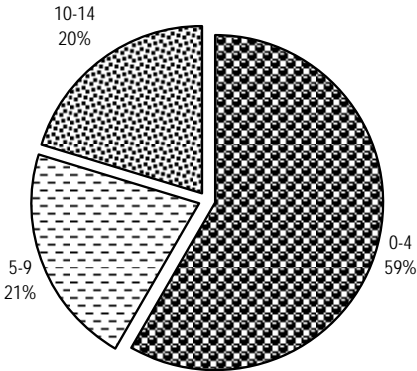


Chart 2
Share of traffic by type
(percentage, 2005)

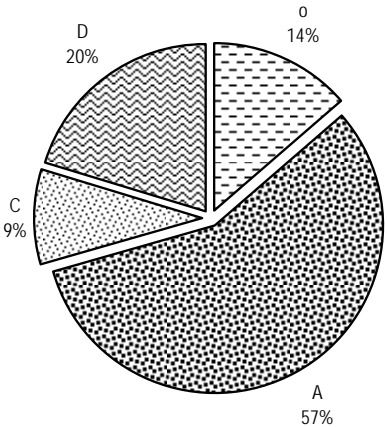
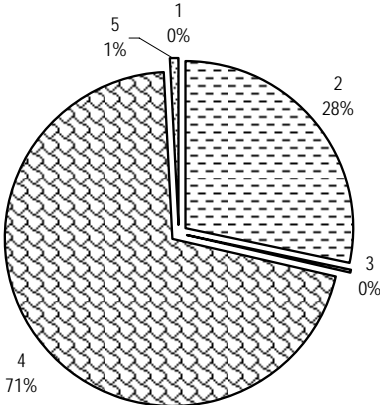


Chart 3
Share of traffic by region of partner
(percentage, 2005)

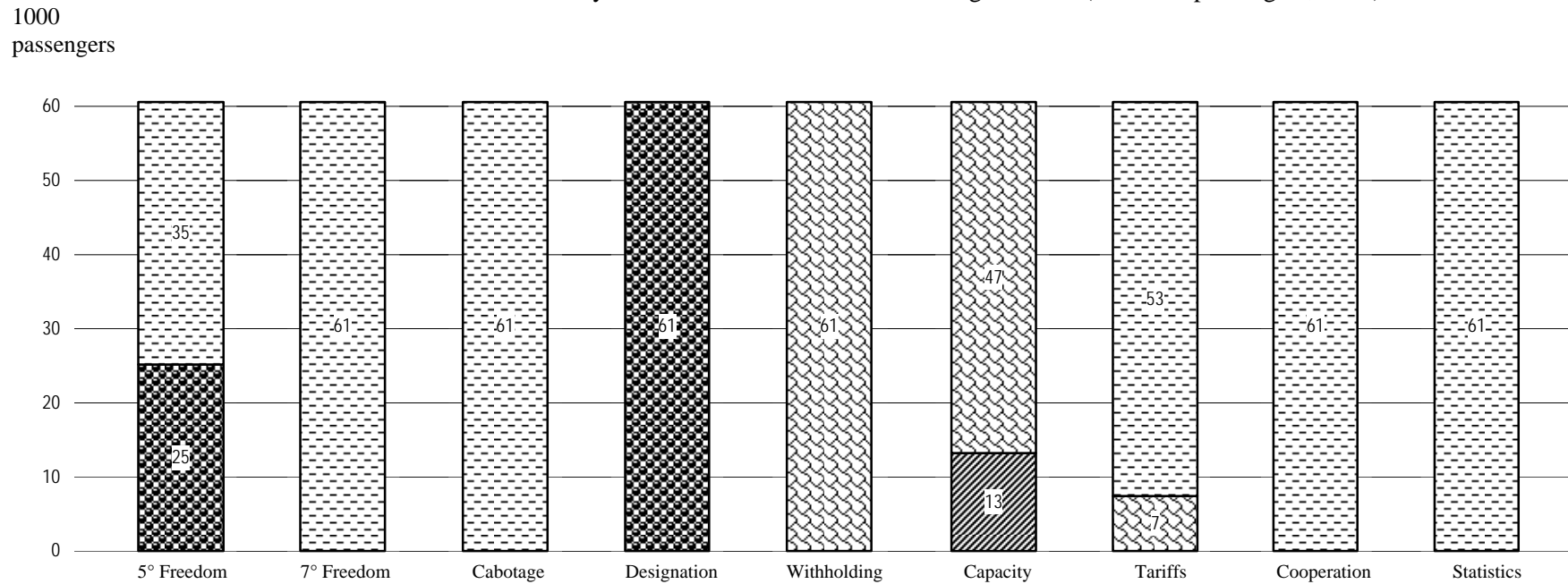


1 Africa; 2 Asia and Oceania;
3 Commonwealth of Independent States;
4 Europe; 5 Middle East; 6 North America;
7 South and Central America and the Caribbean


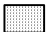
SEYCHELLES

Chart 4





Distribution of traffic by feature of bilateral Air Services Agreements (thousand passengers, 2005)







5° Freedom, 7° Freedom, Cabotage, Designation, Cooperation, Statistics

-  With
-  Without







Withholding

-  Principal Place of Business
-  Community of Interest
-  Substantial Ownership and Effective Control
-  Undetermined

Capacity

-  Free Determination
-  Bermuda I
-  Pre-Determination
-  Undetermined

Tariffs

-  Free Pricing
-  Zone Pricing
-  Double Disapproval
-  Country of Origin
-  Double Approval
-  Undetermined

SEYCHELLES

Table 2
Bilateral Air Services Agreements recorded by ICAO, selected indicators (2005)

Party	Date	Direct Services	ALI Standard	ALI 5th+	ALI OWN+	ALI DES+	Type	Distance (km)	Traffic Range (passengers)
GERMANY	27/02/1981	Yes	0	0.0	0.0	0.0	A	7748	1-500000
SINGAPORE	07/02/1984	Yes	10	15.5	8.5	9.0	D	5420	1-500000
SWITZERLAND	02/11/1995	No	9	14.5	7.5	8.0	o	7421	1-500000
INDIA	30/10/1978	No	6	12.0	5.0	5.5	C	4372	1-500000
AUSTRIA	16/09/1985	No	0	0.0	0.0	0.0	A	7003	1-500000
NETHERLANDS	28/05/1985	No	4	3.5	3.5	3.5	o	7921	1-500000
BAHRAIN	26/06/1995	No	6	12.0	5.0	5.5	C	3471	1-500000
RUSSIAN FEDERATION	21/11/1980	No	10	15.5	8.5	9.0	D	6915	1-500000
LESOTHO	20/11/1987	No	6	12.0	5.0	5.5	C	4028	1-500000
SOMALIA	22/09/1978	No	6	12.0	5.0	5.5	C	1348	<1

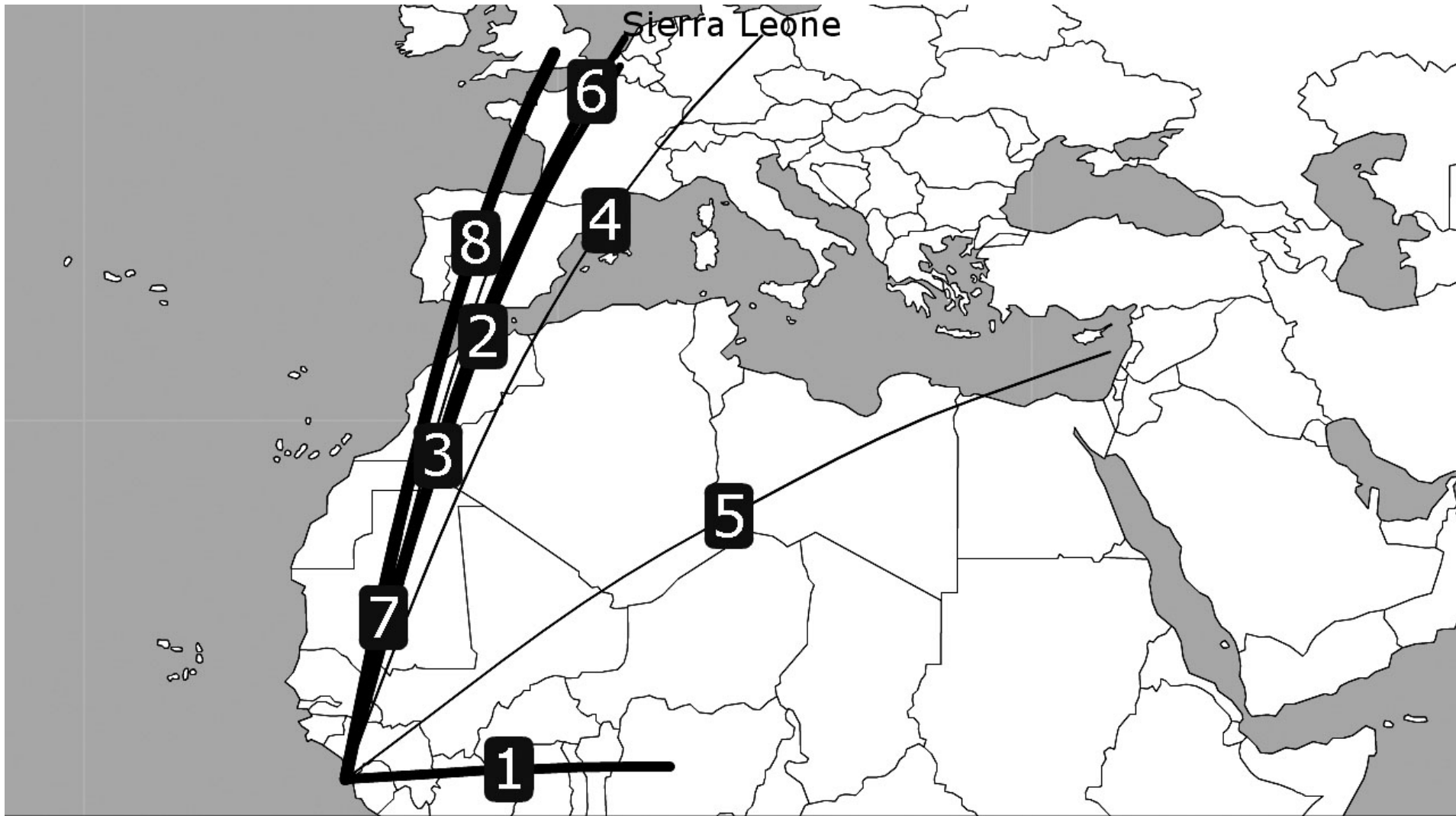
Table 3
Direct air transportation services (passengers) not covered by a bilateral Air Services Agreement as recorded by ICAO (2005)

Countries or territories	Traffic range
France	1-500000
Italy	1-500000
Mauritius	1-500000
United Arab Emirates	1-500000
South Africa	1-500000

Countries or territories	Traffic range
Kenya	1-500000
Qatar	1-500000
Reunion	1-500000
United Kingdom	...

SIERRA LEONE

SIERRA LEONE



SIERRA LEONE

Table 1
Selected indicators

STATISTICAL DATA						POLICY DATA			
General (2004)		Trade (2004)		Air transport (2004)		Trade (2006)		Air Transport (2005)	
Population (million)	5.34	Total trade (million US\$)	552	WASA traffic (passengers) (2005)	150,622	Final bound MFN tariffs (%)	47.4	Traffic weighted average ALI (Standard)	12.2
Share in world population (%)	0.08	Share in world trade (%)	0.00	Share of total WASA traffic (%) (2005)	0.02	Services sectors committed (out of ~160)	110	Traffic weighted average ALI (5th+)	17.5
GDP (million current US\$)	1,075	Trade per capita (US\$)	103	Number of planes (of which, in parenthesis, jets) (2005)	34 (20)	Tourism and travel-related services sectors committed (out of 3)	3	Traffic weighted average ALI (OWN+)	10.5
Share in world GDP (%)	0.00	Trade to GDP ratio (%)	51.4	Number of international airports (2005)	1	Services auxiliary to all modes of transport committed (out of 4)	4	Traffic weighted average ALI (DES+)	15.0
GDP per capita (current US\$)	202	Commercial services trade (million US\$)	146	Domestic traffic (passengers) (2005)	0	Air transport services sectors committed (out of 4)	Other ¹	Dispersion of ALI (standard)	6-14
Size (km ²)	71,620	Share in world commercial services trade (%)	0.00	Air transport services (million US\$)	2	MFN exemptions on air transport services	0	National ownership regime (2004)	...
Density (pop. by km ²)	75	Travel services (million US\$)	88	Passenger air transport services (million US\$)	1	Number of bilateral FTAs	0	Number of bilateral ASAs recorded by ICAO	8
				Freight air transport services (million US\$)	19 (2001)	Number of regional FTAs	1	Number of plurilateral ASAs recorded by ICAO (2006)	2

¹ Air Transport services (CPC 731-746).

SIERRA LEONE

Chart 1
Share of traffic by ALI range
(percentage, 2005)

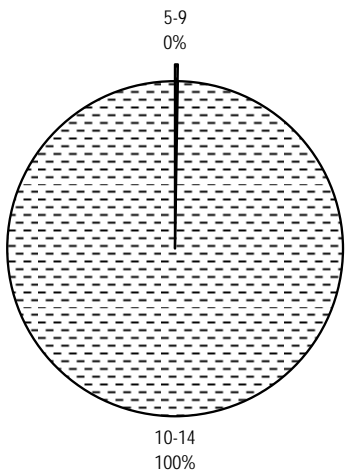


Chart 2
Share of traffic by type
(percentage, 2005)

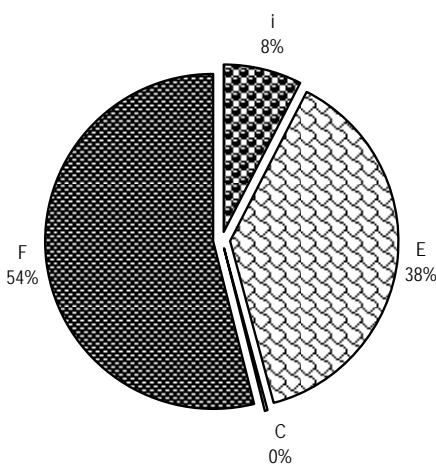
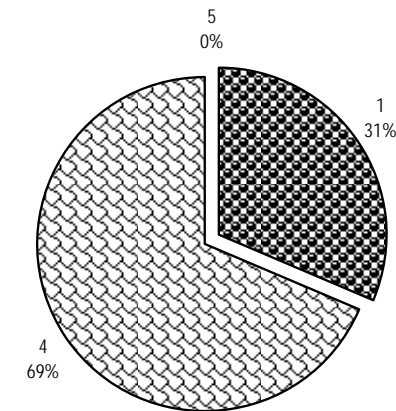


Chart 3
Share of traffic by region of partner
(percentage, 2005)

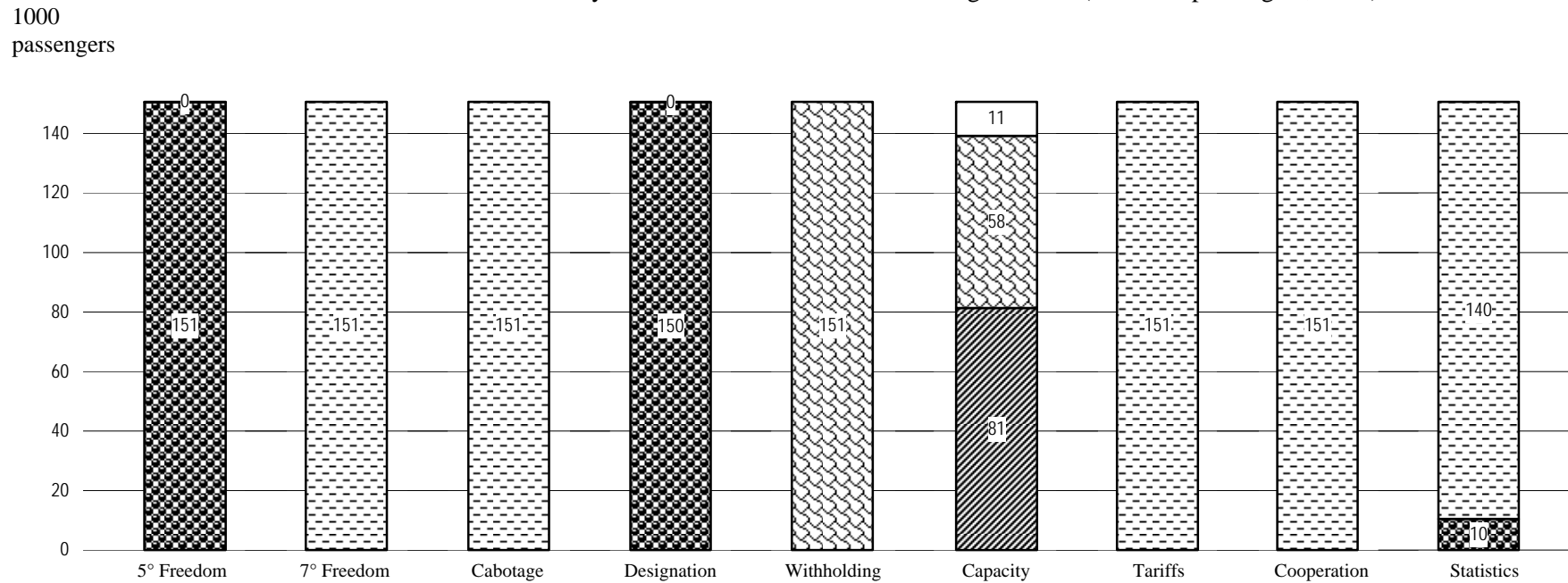


1 Africa; 2 Asia and Oceania;
3 Commonwealth of Independent States;
4 Europe; 5 Middle East; 6 North America;
7 South and Central America and the Caribbean

SIERRA LEONE

Chart 4

Distribution of traffic by feature of bilateral Air Services Agreements (thousand passengers, 2005)



5° Freedom, 7° Freedom, Cabotage, Designation, Cooperation, Statistics

■ With
□ Without

Withholding

■ Principal Place of Business
■ Community of Interest
■ Substantial Ownership and Effective Control
□ Undetermined

Capacity

■ Free Determination
■ Bermuda I
■ Pre-Determination
□ Undetermined

Tariffs

■ Free Pricing
■ Zone Pricing
■ Double Disapproval
■ Country of Origin
■ Double Approval
□ Undetermined

SIERRA LEONE

Table 2
Bilateral Air Services Agreements recorded by ICAO, selected indicators (2005)

Party	Date	Direct Services	ALI Standard	ALI 5th+	ALI OWN+	ALI DES+	Type	Distance (km)	Traffic Range (passengers)
UNITED KINGDOM	05/04/1962	Yes	14	19.0	12.0	16.5	F	4934	1-500000
NIGERIA	12/03/1973	Yes	10	15.5	8.5	13.0	E	1862	1-500000
NETHERLANDS	13/06/1967	Yes	10	15.5	8.5	13.0	i	5152	1-500000
FRANCE	18/07/1967	Yes	11	16.5	9.5	14.0	E	4724	1-500000
BELGIUM	09/09/1974	Yes	14	19.0	12.0	16.5	F	4983	1-500000
GERMANY	24/09/1970	No	12	17.0	10.0	14.5	i	5129	1-500000
SPAIN	04/06/1976	No	6	12.0	5.0	5.5	C	3677	1-500000
LEBANON	08/08/1968	No	6	5.0	5.0	9.0	i	5724	1-500000

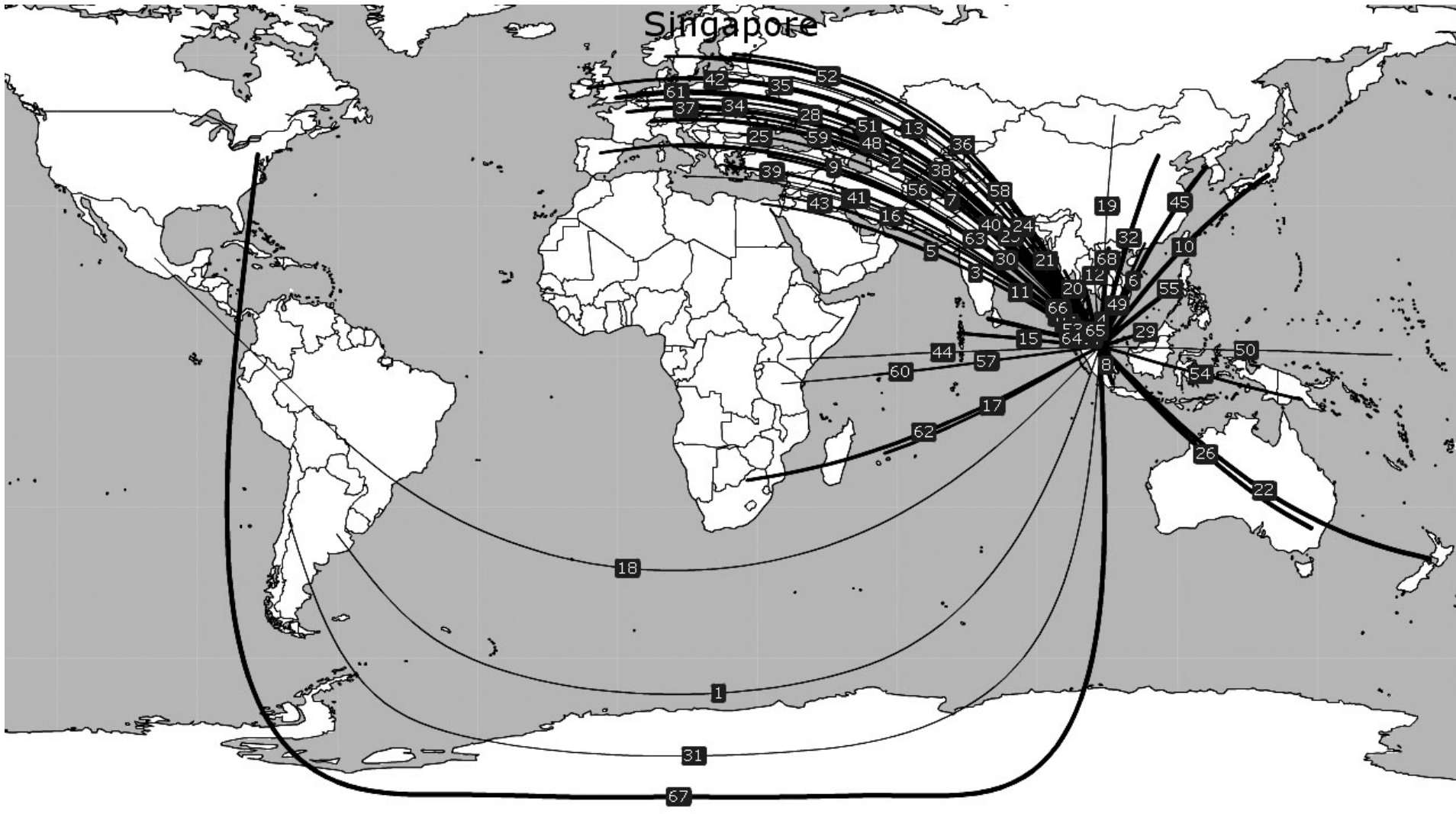
Table 3
Direct air transportation services (passengers) not covered by a bilateral Air Services Agreement as recorded by ICAO (2005)

Countries or territories	Traffic range
Gambia	1-500000
Ghana	1-500000
Liberia	1-500000
Mali	1-500000
Senegal	1-500000
Guinea	1-500000
Côte d'Ivoire	1-500000

Countries or territories	Traffic range
Cameroon	1-500000
Gabon	1-500000
Togo	1-500000
Kenya	1-500000
Ethiopia	1-500000
Benin	1-500000
Congo	...

SINGAPORE

SINGAPORE



SINGAPORE

Table 1
Selected indicators

STATISTICAL DATA						POLICY DATA			
General (2004)		Trade (2004)		Air transport (2004)		Trade (2006)		Air Transport (2005)	
Population (million)	4.24	Total trade (million US\$)	444,994	WASA traffic (passengers) (2005)	21,615,962	Final bound MFN tariffs (%)	6.9	Traffic weighted average ALI (Standard)	13.0
Share in world population (%)	0.07	Share in world trade (%)	1.99	Share of total WASA traffic (%) (2005)	3.10	Services sectors committed (out of ~160)	67	Traffic weighted average ALI (5th+)	17.3
GDP (million current US\$)	106,818	Trade per capita (US\$)	104,944	Number of planes (of which, in parenthesis, jets) (2005)	131 (131)	Tourism and travel-related services sectors committed (out of 3)	3	Traffic weighted average ALI (OWN+)	11.8
Share in world GDP (%)	0.26	Trade to GDP ratio (%)	416.6	Number of international airports (2005)	2	Services auxiliary to all modes of transport committed (out of 4)	1	Traffic weighted average ALI (DES+)	15.3
GDP per capita (current US\$)	25,191	Commercial services trade (million US\$)	81,547	Domestic traffic (passengers) (2005)	0	Air transport services sectors committed (out of 4)	0	Dispersion of ALI (standard)	0-44
Size (km ²)	670	Share in world commercial services trade (%)	1.89	Air transport services (million US\$)	...	MFN exemptions on air transport services	CRS	National ownership regime (2004)	SOEC ¹
Density (pop. by km ²)	6,329	Travel services (million US\$)	12,842	Passenger air transport services (million US\$)	...	Number of bilateral FTAs	8	Number of bilateral ASAs recorded by ICAO	68
				Freight air transport services (million US\$)	...	Number of regional FTAs	2	Number of plurilateral ASAs recorded by ICAO (2006)	3

¹ In dealing with airline designation in the future, Singapore is willing to accept criteria other than the traditional ownership and control for itself and its foreign partners.

SINGAPORE

Chart 1
Share of traffic by ALI range
(percentage, 2005)

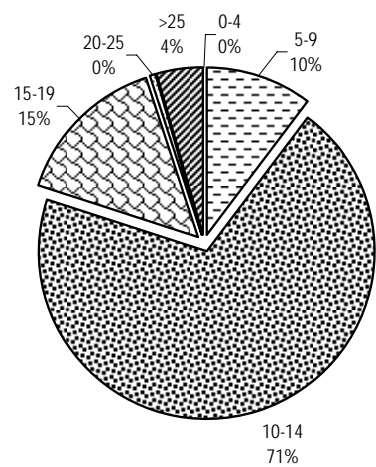


Chart 2
Share of traffic by type
(percentage, 2005)

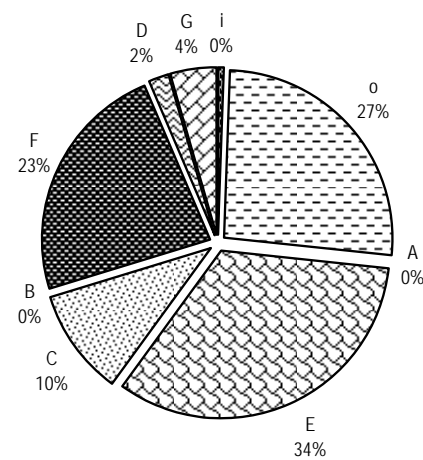
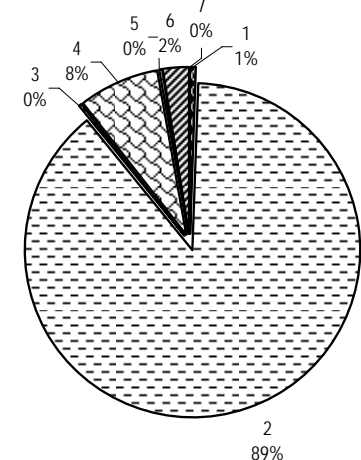


Chart 3
Share of traffic by region of partner
(percentage, 2005)

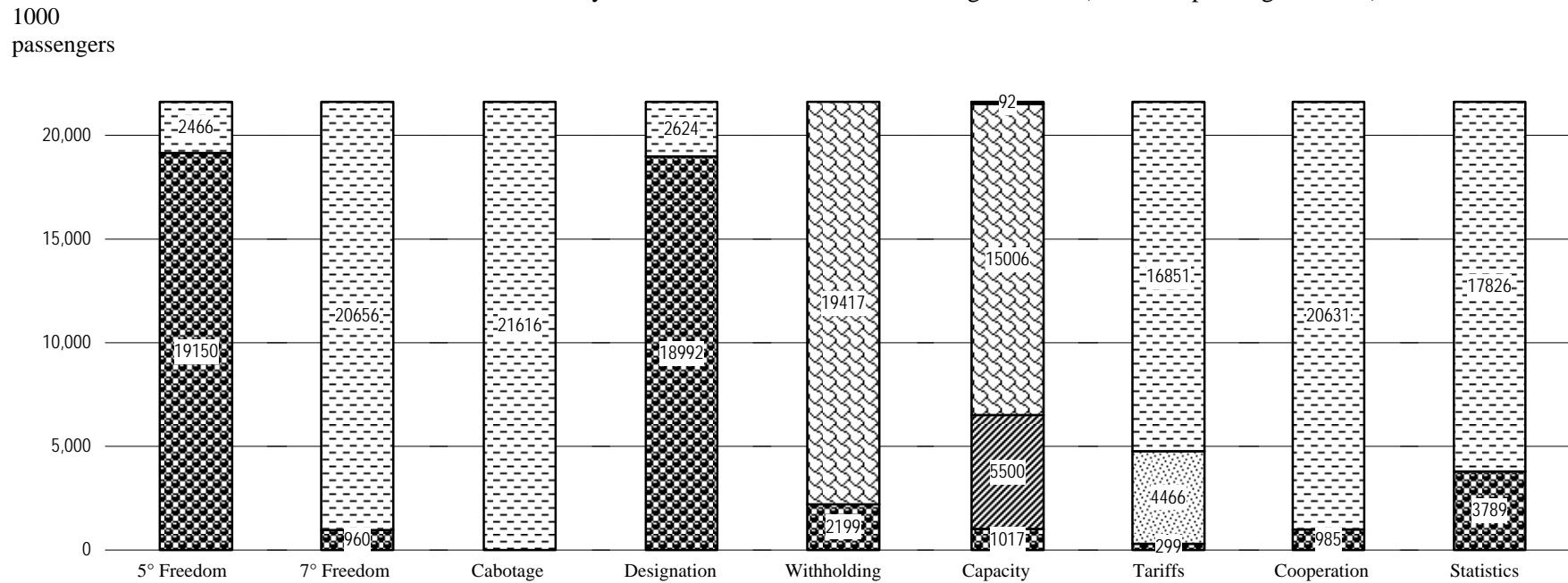


1 Africa; 2 Asia and Oceania;
3 Commonwealth of Independent States;
4 Europe; 5 Middle East; 6 North America;
7 South and Central America and the Caribbean

SINGAPORE

Chart 4

Distribution of traffic by feature of bilateral Air Services Agreements (thousand passengers, 2005)



**5° Freedom, 7° Freedom, Cabotage,
Designation, Cooperation, Statistics**

- With
- Without

Withholding

- Principal Place of Business
- Community of Interest
- Substantial Ownership and Effective Control
- Undetermined

Capacity

- Free Determination
- Bermuda I
- Pre-Determination
- Undetermined

Tariffs

- Free Pricing
- Zone Pricing
- Double Disapproval
- Country of Origin
- Double Approval
- Undetermined

SINGAPORE

Table 2
Bilateral Air Services Agreements recorded by ICAO, selected indicators (2005)

Party	Date	Direct Services	ALI Standard	ALI 5th+	ALI OWN+	ALI DES+	Type	Distance (km)	Traffic Range (passengers)
INDONESIA	29/09/1994	Yes	16	20.5	13.5	18.5	o	886	3000001-3500000
THAILAND	02/09/1968	Yes	10	15.5	8.5	13.0	E	1434	2500001-3000000
CHINA	21/04/1993	Yes	11	16.5	9.5	14.0	E	4485	2000001-2500000
MALAYSIA	28/08/1972	Yes	14	19.0	12.0	16.5	F	316	1500001-2000000
HONG KONG, CHINA	30/04/1996	Yes	12	10.5	17.5	15.0	o	2588	1500001-2000000
AUSTRALIA	03/11/1967	Yes	6	12.0	5.0	5.5	C	6302	1500001-2000000
INDIA	23/01/1968	Yes	10	15.5	8.5	13.0	E	4154	1000001-1500000
JAPAN	14/02/1967	Yes	14	19.0	12.0	16.5	F	5326	1000001-1500000
UNITED KINGDOM	12/01/1971	Yes	14	19.0	12.0	16.5	F	10869	500001-1000000
PHILIPPINES	11/04/1974	Yes	10	15.5	8.5	13.0	E	2397	500001-1000000
KOREA, REPUBLIC OF	02/02/1972	Yes	14	19.0	12.0	16.5	F	4677	500001-1000000
UNITED STATES	08/04/1997	Yes	34	36.0	29.0	35.0	G	15351	500001-1000000
VIET NAM	20/04/1992	Yes	11	9.5	9.5	14.0	o	2207	1-500000
NEW ZEALAND	27/11/1997	Yes	44	45.0	45.0	44.5	G	8614	1-500000
GERMANY	19/06/1980	Yes	6	12.0	5.0	5.5	C	10380	1-500000
SRI LANKA	29/08/1985	Yes	14	19.0	12.0	16.5	F	2734	1-500000
FRANCE	29/06/1967	Yes	14	19.0	12.0	16.5	F	10748	1-500000
BANGLADESH	26/05/1979	Yes	10	15.5	8.5	9.0	D	2888	1-500000
BRUNEI DARUSSALAM	24/05/1997	Yes	34	36.0	29.0	35.0	G	1300	1-500000
NETHERLANDS	29/12/1966	Yes	14	19.0	12.0	16.5	F	10510	1-500000
SWITZERLAND	28/02/1969	Yes	10	15.5	8.5	9.0	D	10399	1-500000
MYANMAR	23/01/1996	Yes	10	15.5	8.5	13.0	E	1920	1-500000
CAMBODIA	04/11/1996	Yes	22	25.5	18.5	24.0	i	1152	1-500000
SOUTH AFRICA	22/05/1992	Yes	16	20.5	13.5	18.5	o	9671	1-500000
ITALY	28/06/1985	Yes	6	12.0	5.0	5.5	C	10033	1-500000
MALDIVES	12/08/1983	Yes	13	11.5	11.5	16.0	o	3393	1-500000
DENMARK	20/12/1966	Yes	10	15.5	8.5	9.0	D	9978	1-500000

SINGAPORE

Party	Date	Direct Services	ALI Standard	ALI 5th+	ALI OWN+	ALI DES+	Type	Distance (km)	Traffic Range (passengers)
TURKEY	14/01/1987	Yes	6	12.0	5.0	5.5	C	8660	1-500000
MACAO, CHINA	27/10/1995	Yes	18	15.5	22.5	20.5	o	2561	1-500000
GREECE	21/08/1971	Yes	6	12.0	5.0	5.5	C	9063	1-500000
AUSTRIA	08/08/1978	Yes	14	19.0	12.0	16.5	F	9724	1-500000
PAPUA NEW GUINEA	02/09/1980	Yes	10	15.5	8.5	9.0	D	4943	1-500000
IRELAND	20/02/1981	No	6	12.0	5.0	5.5	C	11218	1-500000
SPAIN	11/03/1992	No	7	6.0	6.0	10.0	B	11400	1-500000
MAURITIUS	24/02/1984	Yes	6	12.0	5.0	5.5	C	5588	1-500000
NEPAL	15/06/1984	Yes	17	21.5	14.5	15.5	o	3542	1-500000
SWEDEN	20/12/1966	No	10	15.5	8.5	9.0	D	9654	1-500000
BAHRAIN	12/12/1991	Yes	10	15.5	8.5	13.0	E	6326	1-500000
NORWAY	20/12/1966	No	10	15.5	8.5	9.0	D	10066	1-500000
FINLAND	19/01/1984	Yes	18	22.5	22.5	20.5	o	9277	1-500000
RUSSIAN FEDERATION	14/02/1969	Yes	10	15.5	8.5	9.0	D	8432	1-500000
PAKISTAN	23/05/1975	Yes	14	19.0	12.0	16.5	F	4819	1-500000
BELGIUM	29/05/1967	No	14	19.0	12.0	16.5	F	10571	1-500000
EGYPT	07/05/1980	Yes	8	7.0	7.0	11.0	o	8274	1-500000
SEYCHELLES	07/02/1984	Yes	10	15.5	8.5	9.0	D	5420	1-500000
ISRAEL	16/07/1970	No	14	19.0	12.0	16.5	F	7978	1-500000
CZECH REPUBLIC	07/09/1971	No	14	19.0	12.0	16.5	F	9866	1-500000
KUWAIT	16/02/1987	No	6	12.0	5.0	5.5	C	6676	1-500000
OMAN	18/04/1987	No	6	12.0	5.0	5.5	C	5469	1-500000
HUNGARY	09/03/1990	No	6	12.0	5.0	5.5	C	9521	1-500000
ROMANIA	11/01/1978	No	10	15.5	8.5	9.0	D	8944	1-500000
CYPRUS	27/01/1989	No	0	0.0	0.0	0.0	A	8169	1-500000
BULGARIA	28/11/1969	No	14	19.0	12.0	16.5	F	9148	1-500000
KENYA	17/08/1987	No	6	12.0	5.0	5.5	C	7464	1-500000
MEXICO	21/06/1990	No	10	15.5	8.5	13.0	E	16624	1-500000
JORDAN	07/08/1985	No	10	15.5	8.5	9.0	D	7867	1-500000
LATVIA	06/10/1999	No	16	20.5	13.5	18.5	o	9277	1-500000
LUXEMBOURG	09/04/1975	No	10	15.5	8.5	9.0	D	10462	1-500000

SINGAPORE

Party	Date	Direct Services	ALI Standard	ALI 5th+	ALI OWN+	ALI DES+	Type	Distance (km)	Traffic Range (passengers)
LEBANON	30/03/1968	No	10	15.5	8.5	13.0	E	7948	1-500000
SERBIA AND MONTENEGRO	10/12/1971	No	14	19.0	12.0	16.5	F	9392	1-500000
ARGENTINA	20/02/1997	No	13	18.0	11.0	15.5	E	15891	1-500000
MALTA	19/07/1983	No	6	12.0	5.0	5.5	C	9872	1-500000
TANZANIA	10/12/1987	No	0	0.0	0.0	0.0	A	7226	1-500000
CHILE	09/12/1980	No	24	27.5	20.5	26.0	G	16403	1-500000
LAO PEOPLE'S DEM. REP.	24/04/1995	No	18	22.0	15.0	16.5	i	1863	1-500000
MONGOLIA	18/05/1993	No	16	20.5	13.5	18.5	o	5197	1-500000
NAURU	29/04/1980	No	10	15.5	8.5	9.0	D	7022	1-500000
IRAQ	03/07/1975	No	10	15.5	8.5	9.0	D	7131	<1

Table 3

Direct air transportation services (passengers) not covered by a bilateral Air Services Agreement as recorded by ICAO (2005)

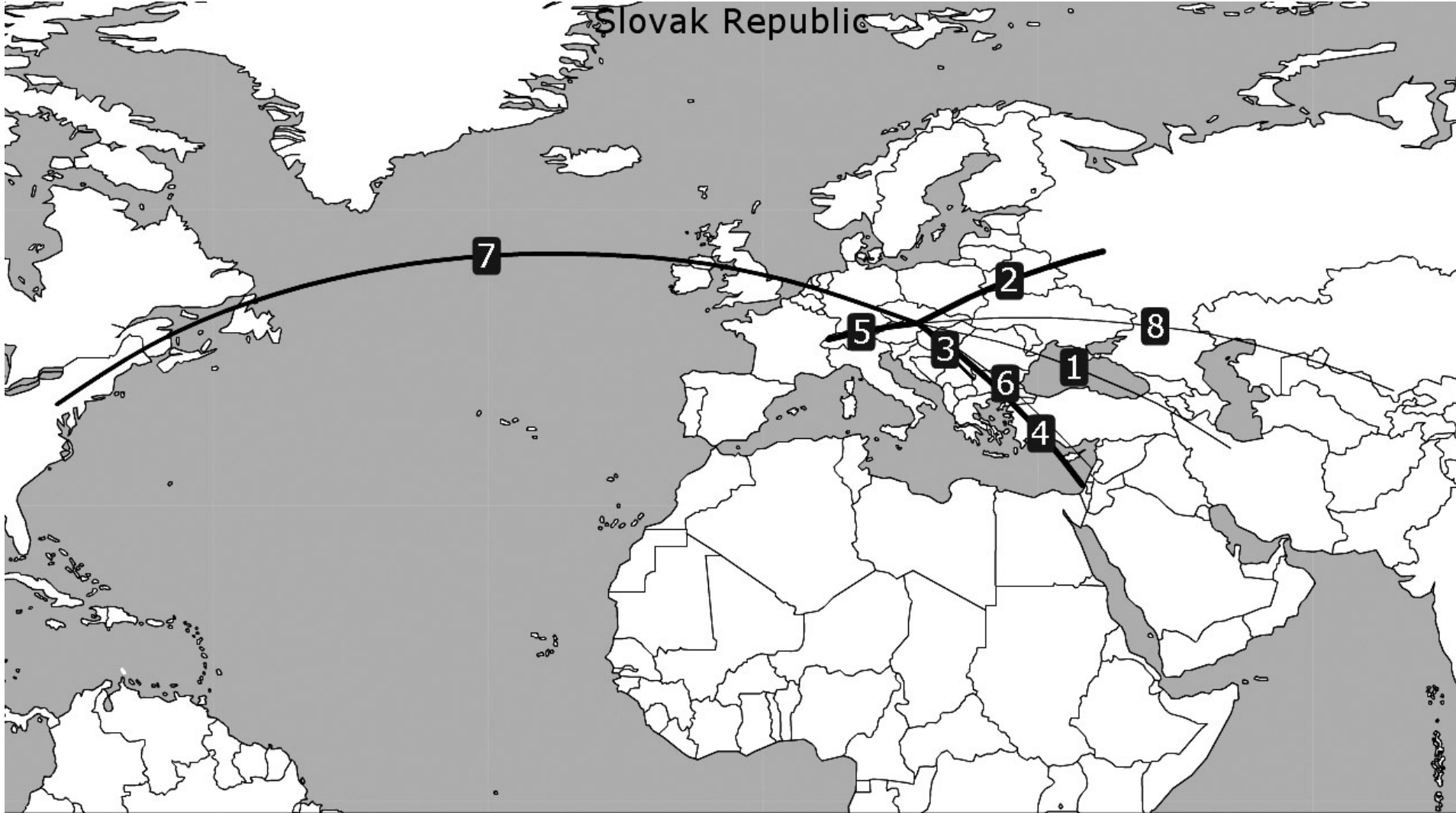
Countries or territories	Traffic range
Taipei, Chinese	1-500000
United Arab Emirates	1-500000
Canada	1-500000
Saudi Arabia	1-500000

Countries or territories	Traffic range
Qatar	1-500000
Zimbabwe	1-500000
Christmas Islands	...

SLOVAK REPUBLIC

SLOVAK REPUBLIC

Slovak Republic



SLOVAK REPUBLIC

Table 1
Selected indicators

STATISTICAL DATA						POLICY DATA			
General (2004)		Trade (2004)		Air transport (2004)		Trade (2006)		Air Transport (2005)	
Population (million)	5.38	Total trade (million US\$)	64,166	WASA traffic (passengers) (2005)	110,011	Final bound MFN tariffs (%)	4.1	Traffic weighted average ALI (Standard)	8.8
Share in world population (%)	0.08	Share in world trade (%)	0.29	Share of total WASA traffic (%) (2005)	0.02	Services sectors committed (out of ~160)	94	Traffic weighted average ALI (5th+)	10.3
GDP (million current US\$)	41,094	Trade per capita (US\$)	11,921	Number of planes (of which, in parenthesis, jets) (2005)	21 (13)	Tourism and travel-related services sectors committed (out of 3)	3	Traffic weighted average ALI (OWN+)	7.5
Share in world GDP (%)	0.10	Trade to GDP ratio (%)	156.1	Number of international airports (2005)	5	Services auxiliary to all modes of transport committed (out of 4)	0	Traffic weighted average ALI (DES+)	8.8
GDP per capita (current US\$)	7,635	Commercial services trade (million US\$)	7,118	Domestic traffic (passengers) (2005)	37,924	Air transport services sectors committed (out of 4)	CRS; Sell/Mark; Maint	Dispersion of ALI (standard)	0-34
Size (km ²)	48,080	Share in world commercial services trade (%)	0.16	Air transport services (million US\$)	104 (2003)	MFN exemptions on air transport services	0	National ownership regime (2004)	Community of interest ^{1,2}
Density (pop. by km ²)	112	Travel services (million US\$)	1,649	Passenger air transport services (million US\$)	91 (2003)	Number of bilateral FTAs	24 ³	Number of bilateral ASAs recorded by ICAO	8
				Freight air transport services (million US\$)	13 (2003)	Number of regional FTAs	2 ³	Number of plurilateral ASAs recorded by ICAO (2006)	3

¹ In dealing with airline designation in the future, the Slovak Republic is willing to accept criteria other than the traditional ownership and control for itself and its foreign partners.

² The airline has to be established in the territory of the Slovak Republic under the Treaty establishing the European Community; has to have received an Operating Licence in accordance with European Community law; effective regulatory control of the airline has to be exercised and maintained by the European Community Member State responsible for issuing its Air Operators Certificate; and the relevant aeronautical authority has to be clearly identified in the designation (Commission Decision of 29 March 2005 on approving the standard clauses for inclusion in bilateral Air Service Agreements between Member States and third countries jointly laid down by the Commission and the Member States.

³ Via EC membership.

SLOVAK REPUBLIC

Chart 1

Share of traffic by ALI range
(percentage, 2005)

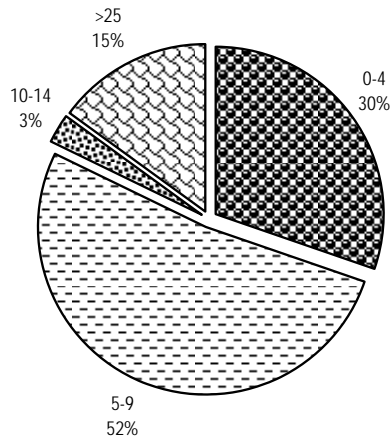


Chart 2

Share of traffic by type
(percentage, 2005)

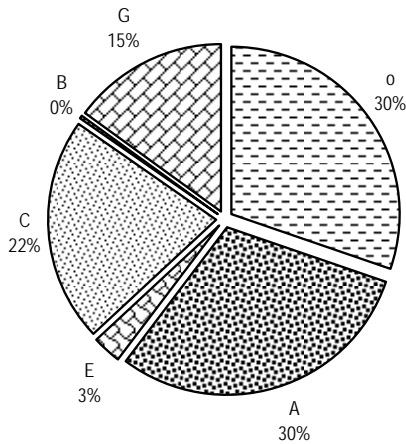
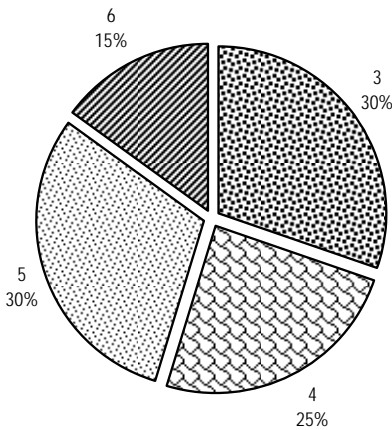


Chart 3

Share of traffic by region of partner
(percentage, 2005)

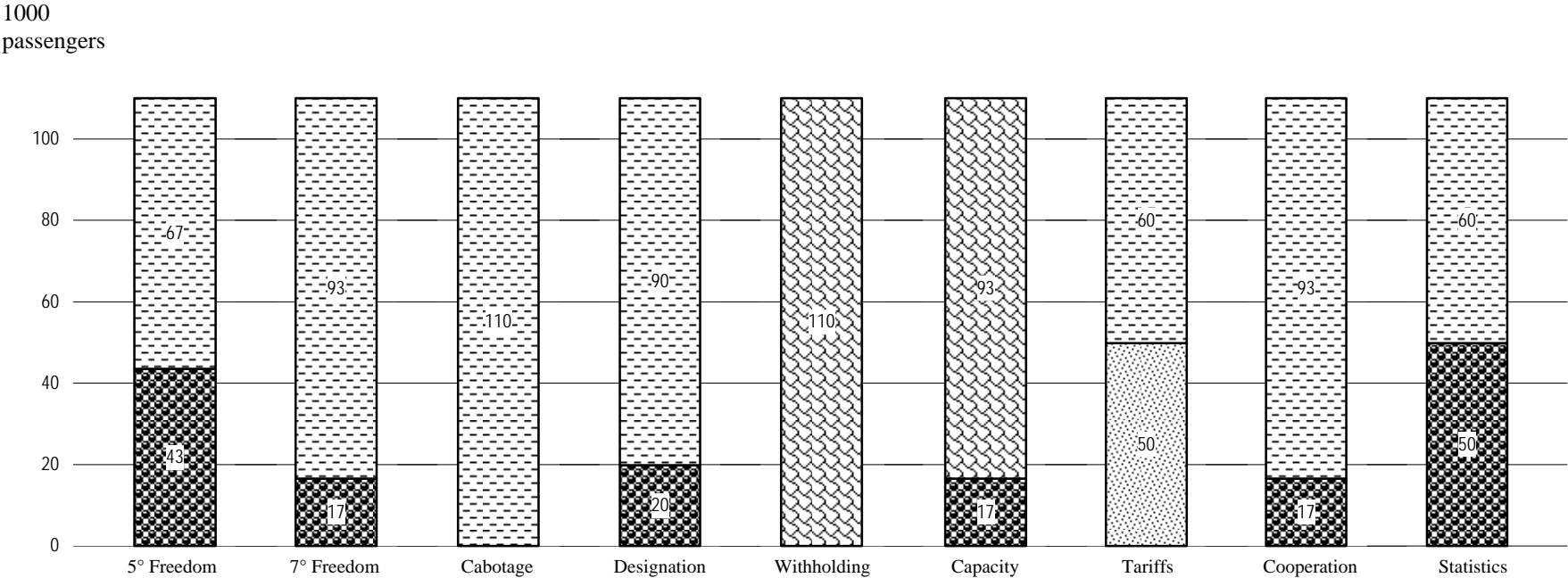


1 Africa; 2 Asia and Oceania;
3 Commonwealth of Independent States;
4 Europe; 5 Middle East; 6 North America;
7 South and Central America and the Caribbean

SLOVAK REPUBLIC

Chart 4

Distribution of traffic by feature of bilateral Air Services Agreements (thousand passengers, 2005)



**5° Freedom, 7° Freedom, Cabotage,
Designation, Cooperation, Statistics**

- With
- Without

Withholding

- Principal Place of Business
- Community of Interest
- Substantial Ownership and Effective Control
- Undetermined

Capacity

- Free Determination
- Bermuda I
- Pre-Determination
- Undetermined

Tariffs

- Free Pricing
- Zone Pricing
- Double Disapproval
- Country of Origin
- Double Approval
- Undetermined

SLOVAK REPUBLIC

Table 2
Bilateral Air Services Agreements recorded by ICAO, selected indicators (2005)

Party	Date	Direct Services	ALI Standard	ALI 5th+	ALI OWN+	ALI DES+	Type	Distance (km)	Traffic Range (passengers)
RUSSIAN FEDERATION	31/10/1995	Yes	7	6.0	6.0	6.5	o	1633	1-500000
ISRAEL	22/08/1994	Yes	0	0.0	0.0	0.0	A	2323	1-500000
SWITZERLAND	13/11/1997	Yes	6	12.0	5.0	5.5	C	743	1-500000
UNITED STATES	22/01/2001	No	34	36.0	29.0	35.0	G	6853	1-500000
BULGARIA	08/12/1995	Yes	10	15.5	8.5	13.0	E	777	1-500000
UZBEKISTAN	17/01/1997	No	4	3.5	3.5	7.5	B	4106	1-500000
SYRIAN ARAB REPUBLIC	04/04/2001	No	4	3.5	3.5	7.5	B	2282	1-500000
IRAN, ISLAMIC REP. OF	17/05/2000	No	4	3.5	3.5	7.5	B	3126	1-500000

Table 3
Direct air transportation services (passengers) not covered by a bilateral Air Services Agreement as recorded by ICAO (2005)

Countries or territories	Traffic range
Croatia	1-500000
Kuwait	1-500000
Ukraine	1-500000

Countries or territories	Traffic range
India	1-500000
Romania	1-500000
Lebanon	1-500000

SLOVENIA

SLOVENIA

Table 1
Selected indicators

STATISTICAL DATA						POLICY DATA			
General (2004)		Trade (2004)		Air transport (2004)		Trade (2006)		Air Transport (2005)	
Population (million)	2.00	Total trade (million US\$)	39,416	WASA traffic (passengers) (2005)	169,955	Final bound MFN tariffs (%)	4.1	Traffic weighted average ALI (Standard)	3.9
Share in world population (%)	0.03	Share in world trade (%)	0.18	Share of total WASA traffic (%) (2005)	0.02	Services sectors committed (out of ~160)	84	Traffic weighted average ALI (5th+)	4.4
GDP (million current US\$)	32,182	Trade per capita (US\$)	19,738	Number of planes (of which, in parenthesis, jets) (2005)	16 (14)	Tourism and travel-related services sectors committed (out of 3)	2	Traffic weighted average ALI (OWN+)	3.3
Share in world GDP (%)	0.08	Trade to GDP ratio (%)	122.5	Number of international airports (2005)	2	Services auxiliary to all modes of transport committed (out of 4)	3	Traffic weighted average ALI (DES+)	6.4
GDP per capita (current US\$)	16,115	Commercial services trade (million US\$)	6,029	Domestic traffic (passengers) (2005)	0	Air transport services sectors committed (out of 4)	CRS; Sell/Mark; Maint	Dispersion of ALI (standard)	0-6
Size (km ²)	20,140	Share in world commercial services trade (%)	0.14	Air transport services (million US\$)	191	MFN exemptions on air transport services	CRS; Sell/Mark	National ownership regime (2004)	Community of interest ^{1,2}
Density (pop. by km ²)	99	Travel services (million US\$)	2,496	Passenger air transport services (million US\$)	153	Number of bilateral FTAs	24 ³	Number of bilateral ASAs recorded by ICAO	10
				Freight air transport services (million US\$)	25	Number of regional FTAs	2 ³	Number of plurilateral ASAs recorded by ICAO (2006)	3

¹ In dealing with airline designation in the future, Slovenia is willing to accept criteria other than the traditional ownership and control for itself and its foreign partners.

² The airline has to be established in the territory of Slovenia under the Treaty establishing the European Community; has to have received an Operating Licence in accordance with European Community law; effective regulatory control of the airline has to be exercised and maintained by the European Community Member State responsible for issuing its Air Operators Certificate; and the relevant aeronautical authority has to be clearly identified in the designation (Commission Decision of 29 March 2005 on approving the standard clauses for inclusion in bilateral Air Service Agreements between Member States and third countries jointly laid down by the Commission and the Member States.

³ Via EC membership.

SLOVENIA

Chart 1
Share of traffic by ALI range
(percentage, 2005)

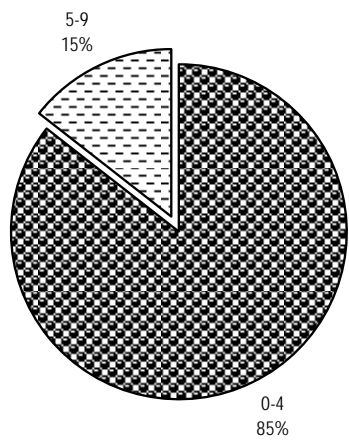


Chart 2
Share of traffic by type
(percentage, 2005)

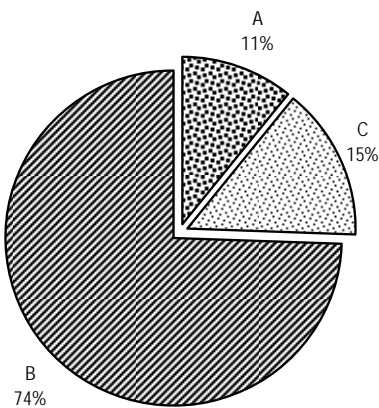
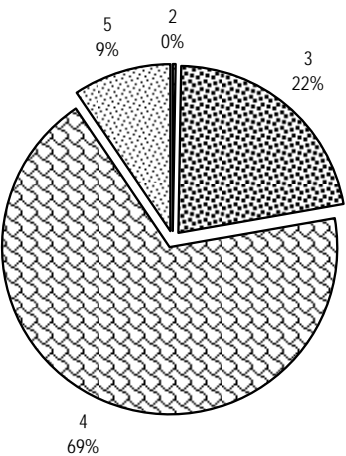


Chart 3
Share of traffic by region of partner
(percentage, 2005)

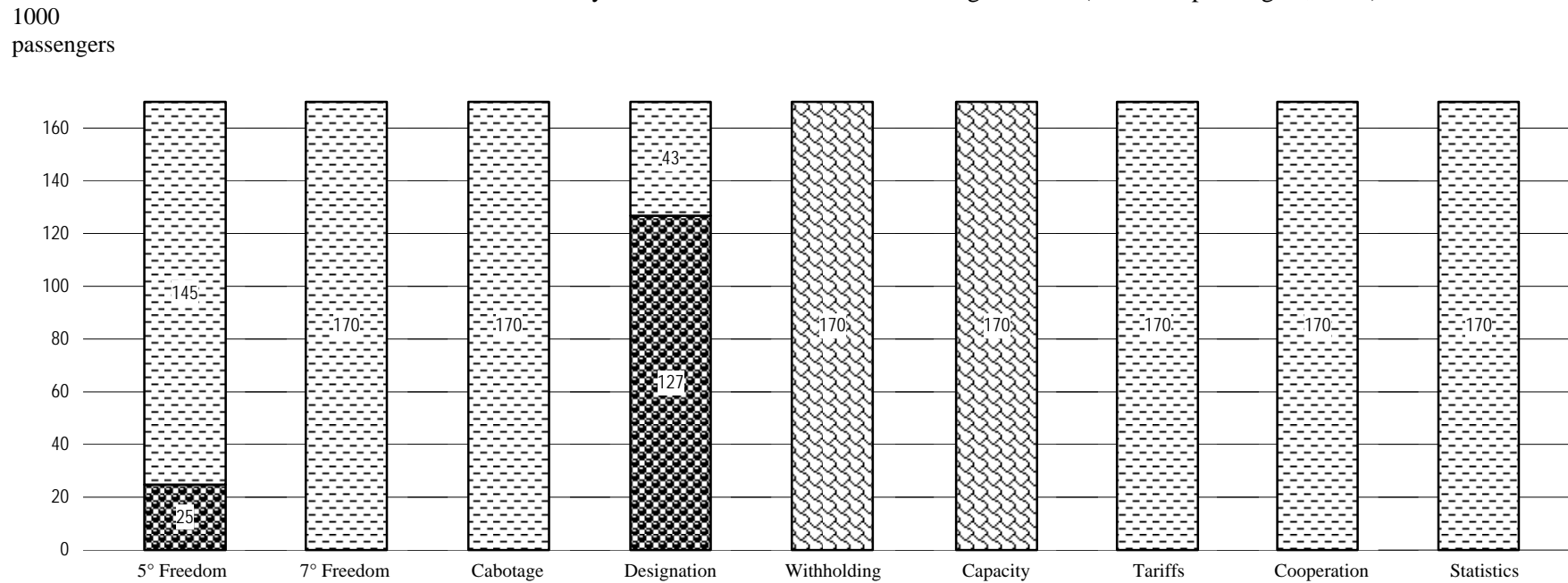


1 Africa; 2 Asia and Oceania;
3 Commonwealth of Independent States;
4 Europe; 5 Middle East; 6 North America;
7 South and Central America and the Caribbean



SLOVENIA

Chart 4





Distribution of traffic by feature of bilateral Air Services Agreements (thousand passengers, 2005)







**5° Freedom, 7° Freedom, Cabotage,
Designation, Cooperation, Statistics**

-  With
-  Without







Withholding

-  Principal Place of Business
-  Community of Interest
-  Substantial Ownership and Effective Control
-  Undetermined

Capacity

-  Free Determination
-  Bermuda I
-  Pre-Determination
-  Undetermined

Tariffs

-  Free Pricing
-  Zone Pricing
-  Double Disapproval
-  Country of Origin
-  Double Approval
-  Undetermined

SLOVENIA

Table 2
Bilateral Air Services Agreements recorded by ICAO, selected indicators (2005)

Party	Date	Direct Services	ALI Standard	ALI 5th+	ALI OWN+	ALI DES+	Type	Distance (km)	Traffic Range (passengers)
TURKEY	03/04/1997	Yes	4	3.5	3.5	7.5	B	1291	1-500000
RUSSIAN FEDERATION	07/09/1998	Yes	4	3.5	3.5	7.5	B	1938	1-500000
SWITZERLAND	04/12/1992	Yes	6	12.0	5.0	5.5	C	550	1-500000
BOSNIA AND HERZEGOVINA	19/01/1996	Yes	4	3.5	3.5	7.5	B	395	1-500000
ISRAEL	16/06/1993	Yes	0	0.0	0.0	0.0	A	2330	1-500000
ALBANIA	10/11/1992	Yes	4	3.5	3.5	7.5	B	678	1-500000
UKRAINE	23/05/1994	No	0	0.0	0.0	0.0	A	1278	1-500000
MALAYSIA	28/10/1997	No	4	3.5	3.5	7.5	B	9550	1-500000
MALTA	20/03/1996	No	4	3.5	3.5	7.5	B	1132	1-500000
CROATIA	08/07/1994	No	4	3.5	3.5	7.5	B	117	1-500000

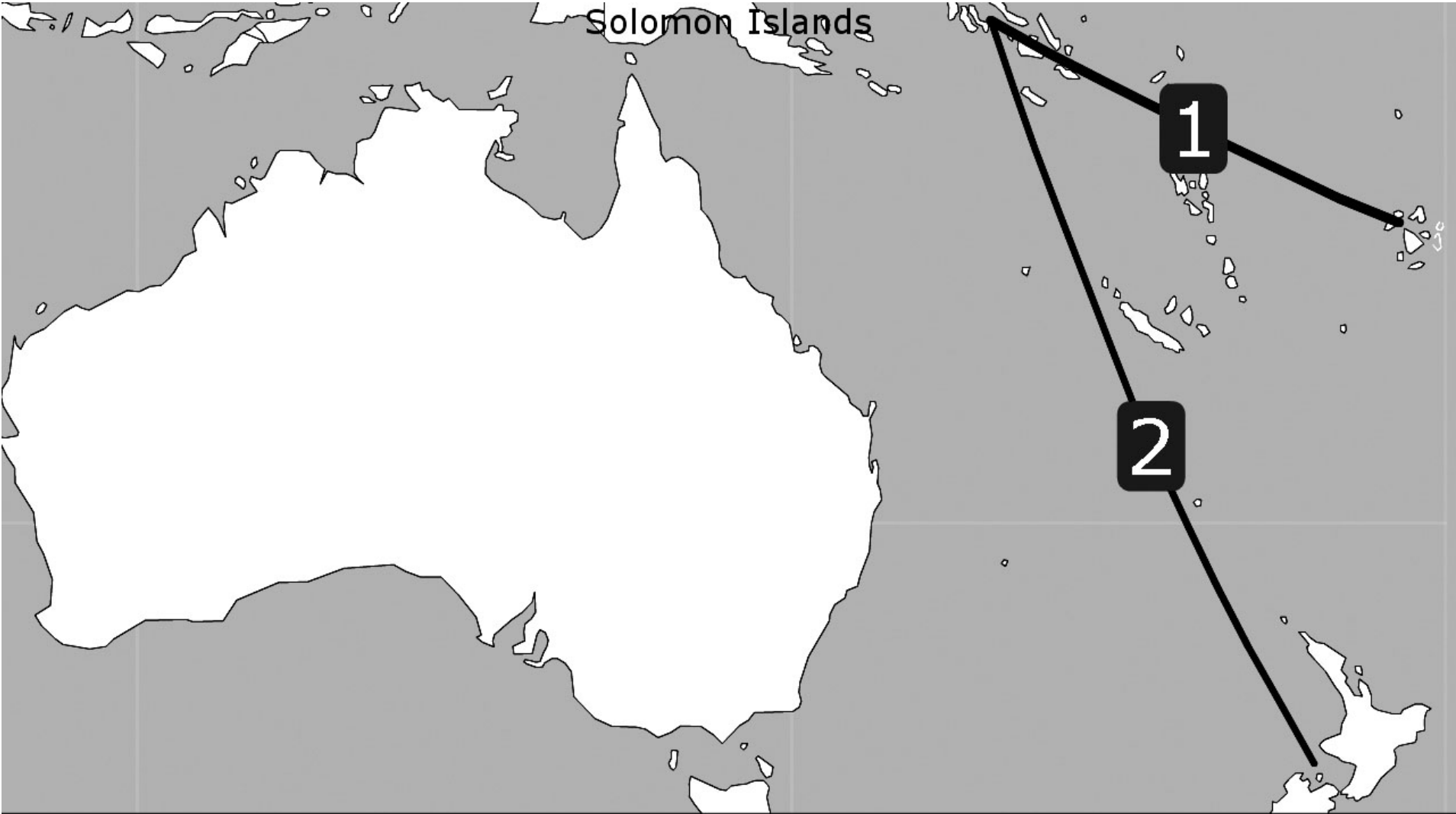
Table 3
Direct air transportation services (passengers) not covered by a bilateral Air Services Agreement as recorded by ICAO (2005)

Countries or territories	Traffic range
Serbia and Montenegro	1-500000

Countries or territories	Traffic range
FYR Macedonia	1-500000

SOLOMON ISLANDS

SOLOMON ISLANDS



SOLOMON ISLANDS

Table 1
Selected indicators

STATISTICAL DATA						POLICY DATA			
General (2004)		Trade (2004)		Air transport (2004)		Trade (2006)		Air Transport (2005)	
Population (million)	0.47	Total trade (million US\$)	241	WASA traffic (passengers) (2005)	8,120	Final bound MFN tariffs (%)	78.8	Traffic weighted average ALI (Standard)	1.6
Share in world population (%)	0.01	Share in world trade (%)	0.00	Share of total WASA traffic (%) (2005)	0.00	Services sectors committed (out of ~160)	29	Traffic weighted average ALI (5th+)	2.5
GDP (million current US\$)	258	Trade per capita (US\$)	518	Number of planes (of which, in parenthesis, jets) (2005)	3 (0)	Tourism and travel-related services sectors committed (out of 3)	1	Traffic weighted average ALI (OWN+)	1.4
Share in world GDP (%)	0.00	Trade to GDP ratio (%)	93.5	Number of international airports (2005)	1	Services auxiliary to all modes of transport committed (out of 4)	0	Traffic weighted average ALI (DES+)	2.1
GDP per capita (current US\$)	554	Commercial services trade (million US\$)	72	Domestic traffic (passengers) (2005)	60,822	Air transport services sectors committed (out of 4)	0	Dispersion of ALI (standard)	0-10
Size (km²)	27,990	Share in world commercial services trade (%)	0.00	Air transport services (million US\$)	17 (1999)	MFN exemptions on air transport services	0	National ownership regime (2004)	...
Density (pop. by km²)	17	Travel services (million US\$)	12	Passenger air transport services (million US\$)	8 (1999)	Number of bilateral FTAs	0	Number of bilateral ASAs recorded by ICAO	2
				Freight air transport services (million US\$)	9 (1999)	Number of regional FTAs	3	Number of plurilateral ASAs recorded by ICAO (2006)	1

SOLOMON ISLANDS

Chart 1

Share of traffic by ALI range
(percentage, 2005)

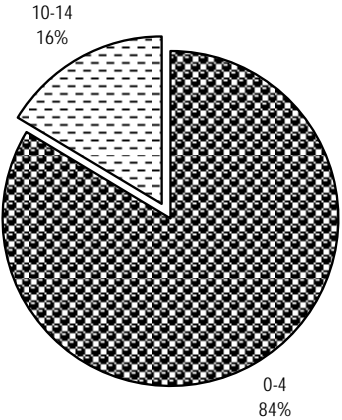


Chart 2

Share of traffic by type
(percentage, 2005)

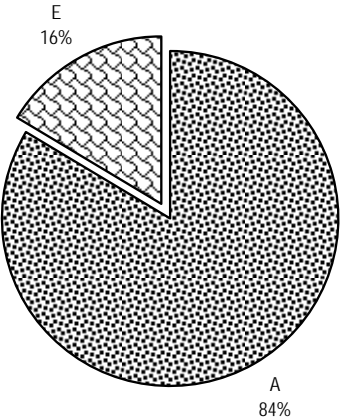
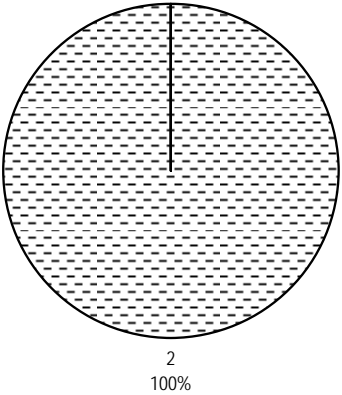


Chart 3

Share of traffic by region of partner
(percentage, 2005)

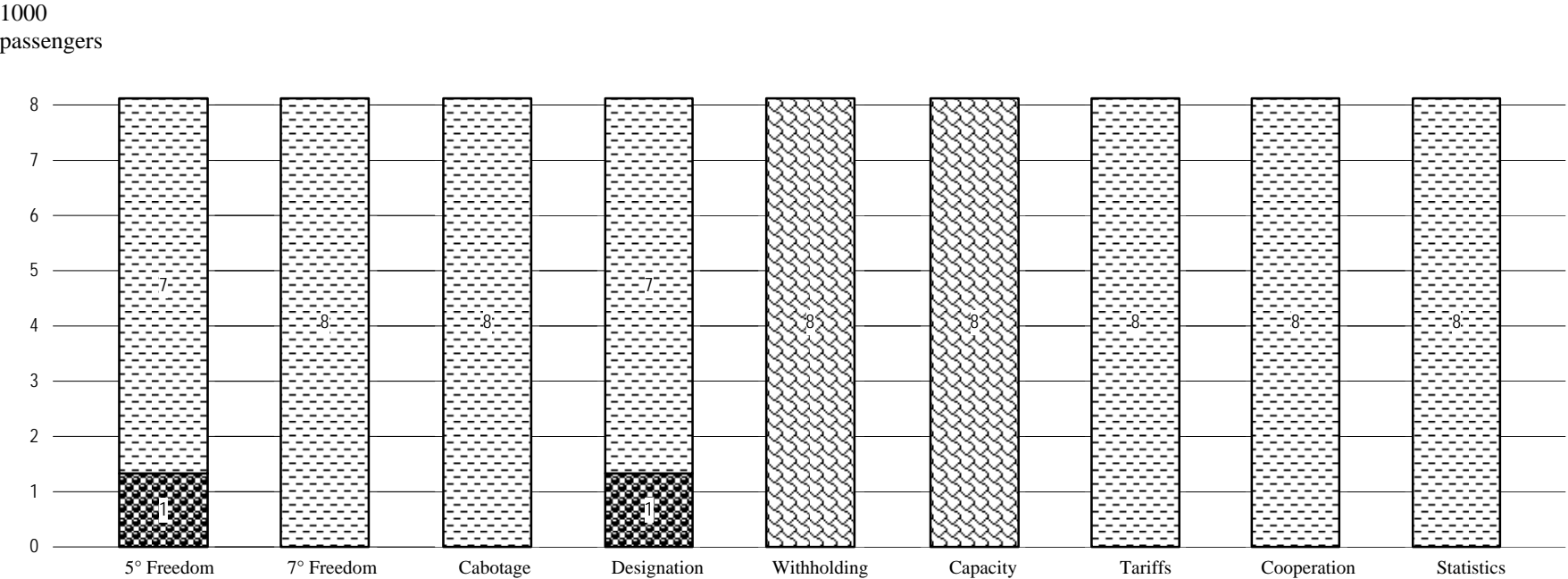


1 Africa; 2 Asia and Oceania;
3 Commonwealth of Independent States;
4 Europe; 5 Middle East; 6 North America;
7 South and Central America and the Caribbean

SOLOMON ISLANDS

Chart 4

Distribution of traffic by feature of bilateral Air Services Agreements (thousand passengers, 2005)



5° Freedom, 7° Freedom, Cabotage,
Designation, Cooperation, Statistics

- With
- Without

Withholding

- Principal Place of Business
- Community of Interest
- Substantial Ownership and Effective Control
- Undetermined

Capacity

- Free Determination
- Bermuda I
- Pre-Determination
- Undetermined

Tariffs

- Free Pricing
- Zone Pricing
- Double Disapproval
- Country of Origin
- Double Approval
- Undetermined

SOLOMON ISLANDS

Table 2

Bilateral Air Services Agreements recorded by ICAO, selected indicators (2005)

Party	Date	Direct Services	ALI Standard	ALI 5th+	ALI OWN+	ALI DES+	Type	Distance (km)	Traffic Range (passengers)
FIJI	23/05/1991	Yes	0	0.0	0.0	0.0	A	2214	1-500000
NEW ZEALAND	30/05/1990	No	10	15.5	8.5	13.0	E	4131	1-500000

Table 3

Direct air transportation services (passengers) not covered by a bilateral Air Services Agreement as recorded by ICAO (2005)

Countries or territories	Traffic range
Australia	1-500000
Nauru	1-500000
Papua New Guinea	1-500000

Countries or territories	Traffic range
Vanuatu	1-500000
Kiribati	1-500000