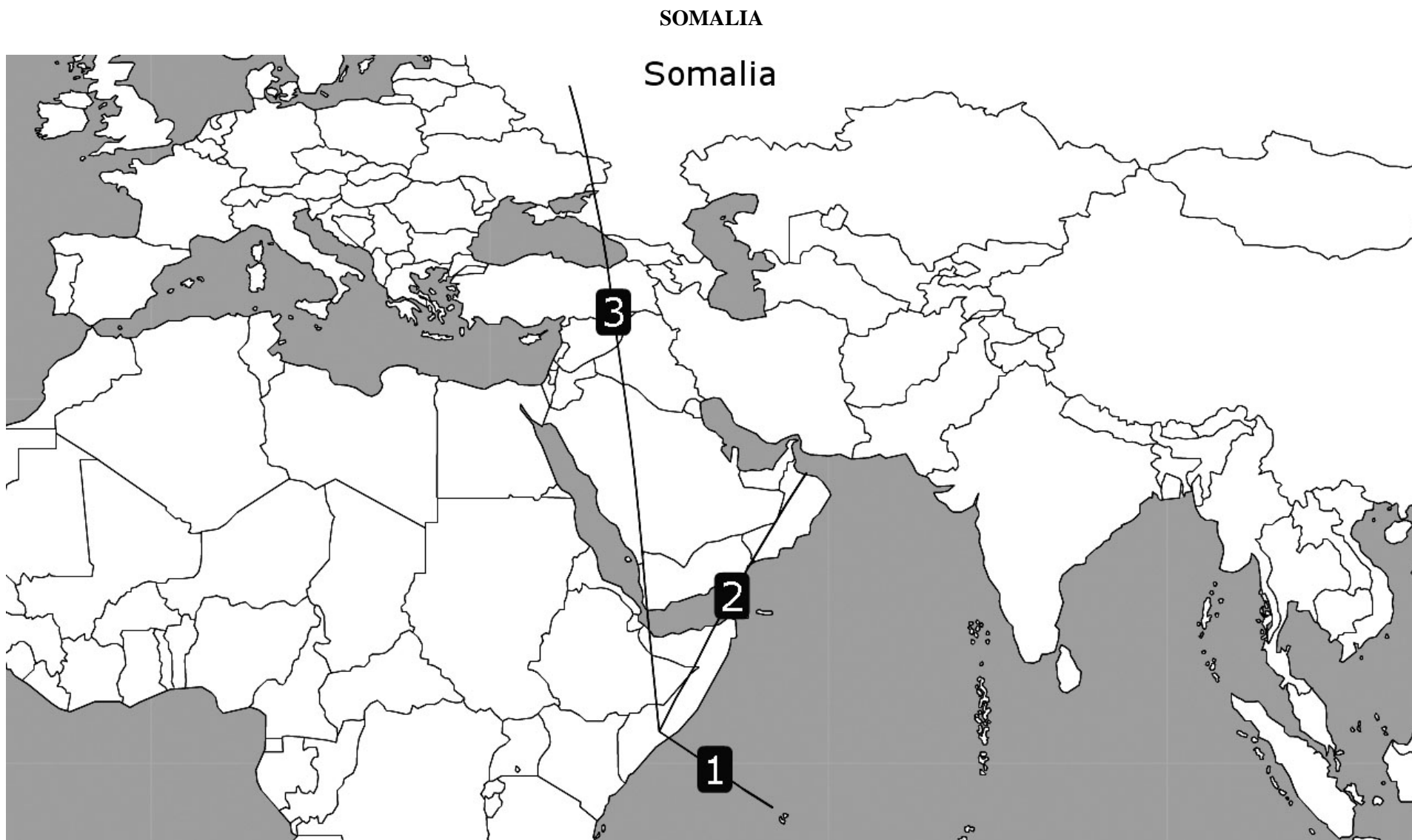


SOMALIA



SOMALIA

Table 1
Selected indicators

STATISTICAL DATA						POLICY DATA			
General (2004)		Trade (2004)		Air transport (2004)		Trade (2006)		Air Transport (2005)	
Population (million)	7.96	Total trade (million US\$)	...	WASA traffic (passengers) (2005)	48	Final bound MFN tariffs (%)	-	Traffic weighted average ALI (Standard)	6.6
Share in world population (%)	0.13	Share in world trade (%)	...	Share of total WASA traffic (%) (2005)	0.00	Services sectors committed (out of ~160)	-	Traffic weighted average ALI (5th+)	12.6
GDP (million current US\$)	...	Trade per capita (US\$)	...	Number of planes (of which, in parenthesis, jets) (2005)	0	Tourism and travel-related services sectors committed (out of 3)	-	Traffic weighted average ALI (OWN+)	5.6
Share in world GDP (%)	...	Trade to GDP ratio (%)	...	Number of international airports (2005)	7	Services auxiliary to all modes of transport committed (out of 4)	-	Traffic weighted average ALI (DES+)	6.1
GDP per capita (current US\$)	...	Commercial services trade (million US\$)	...	Domestic traffic (passengers) (2005)	...	Air transport services sectors committed (out of 4)	-	Dispersion of ALI (standard)	6-7
Size (km²)	627,340	Share in world commercial services trade (%)	...	Air transport services (million US\$)	...	MFN exemptions on air transport services	-	National ownership regime (2004)	...
Density (pop. by km²)	13	Travel services (million US\$)	...	Passenger air transport services (million US\$)	...	Number of bilateral FTAs	0	Number of bilateral ASAs recorded by ICAO	3
				Freight air transport services (million US\$)	...	Number of regional FTAs	0	Number of plurilateral ASAs recorded by ICAO (2006)	2

SOMALIA

Chart 1

Share of traffic by ALI range
(percentage, 2005)

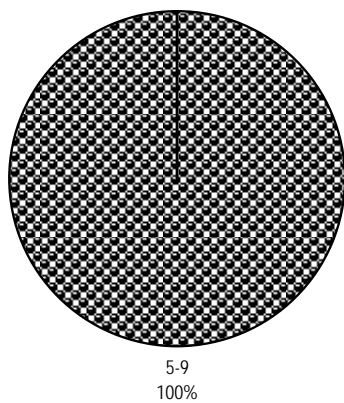


Chart 2

Share of traffic by type
(percentage, 2005)

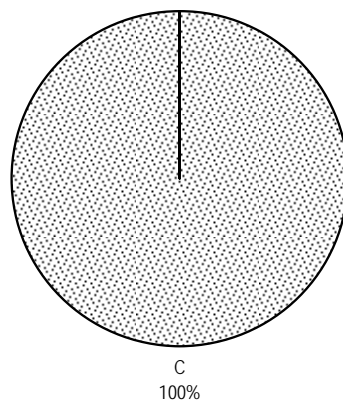
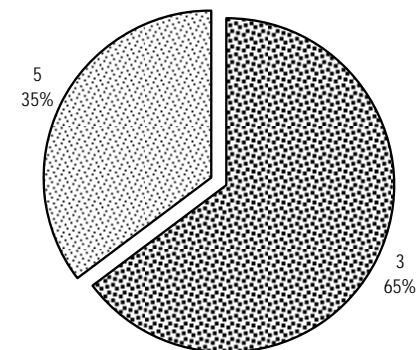


Chart 3

Share of traffic by region of partner
(percentage, 2005)

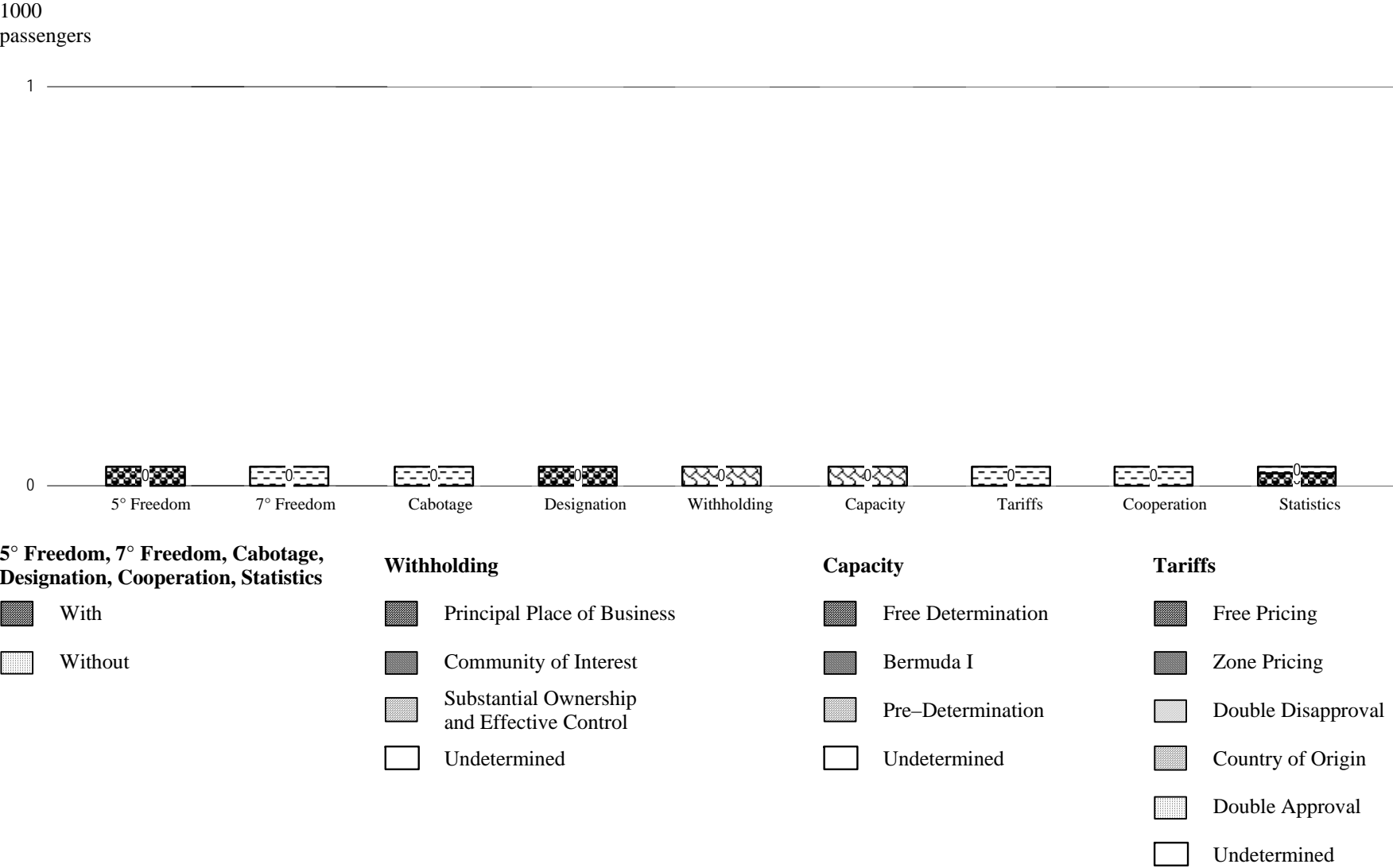


1 Africa; 2 Asia and Oceania;
3 Commonwealth of Independent States;
4 Europe; 5 Middle East; 6 North America;
7 South and Central America and the Caribbean

SOMALIA

Chart 4

Distribution of traffic by feature of bilateral Air Services Agreements (thousand passengers, 2005)



SOMALIA

Table 2
Bilateral Air Services Agreements recorded by ICAO, selected indicators (2005)

Party	Date	Direct Services	ALI Standard	ALI 5th+	ALI OWN+	ALI DES+	Type	Distance (km)	Traffic Range (passengers)
RUSSIAN FEDERATION	22/10/1963	No	7	13.0	6.0	6.5	C	6018	1-500000
OMAN	19/03/1983	No	6	12.0	5.0	5.5	C	2796	1-500000
SEYCHELLES	22/09/1978	No	6	12.0	5.0	5.5	C	1348	<1

Table 3
Direct air transportation services (passengers) not covered by a bilateral Air Services Agreement as recorded by ICAO (2005)

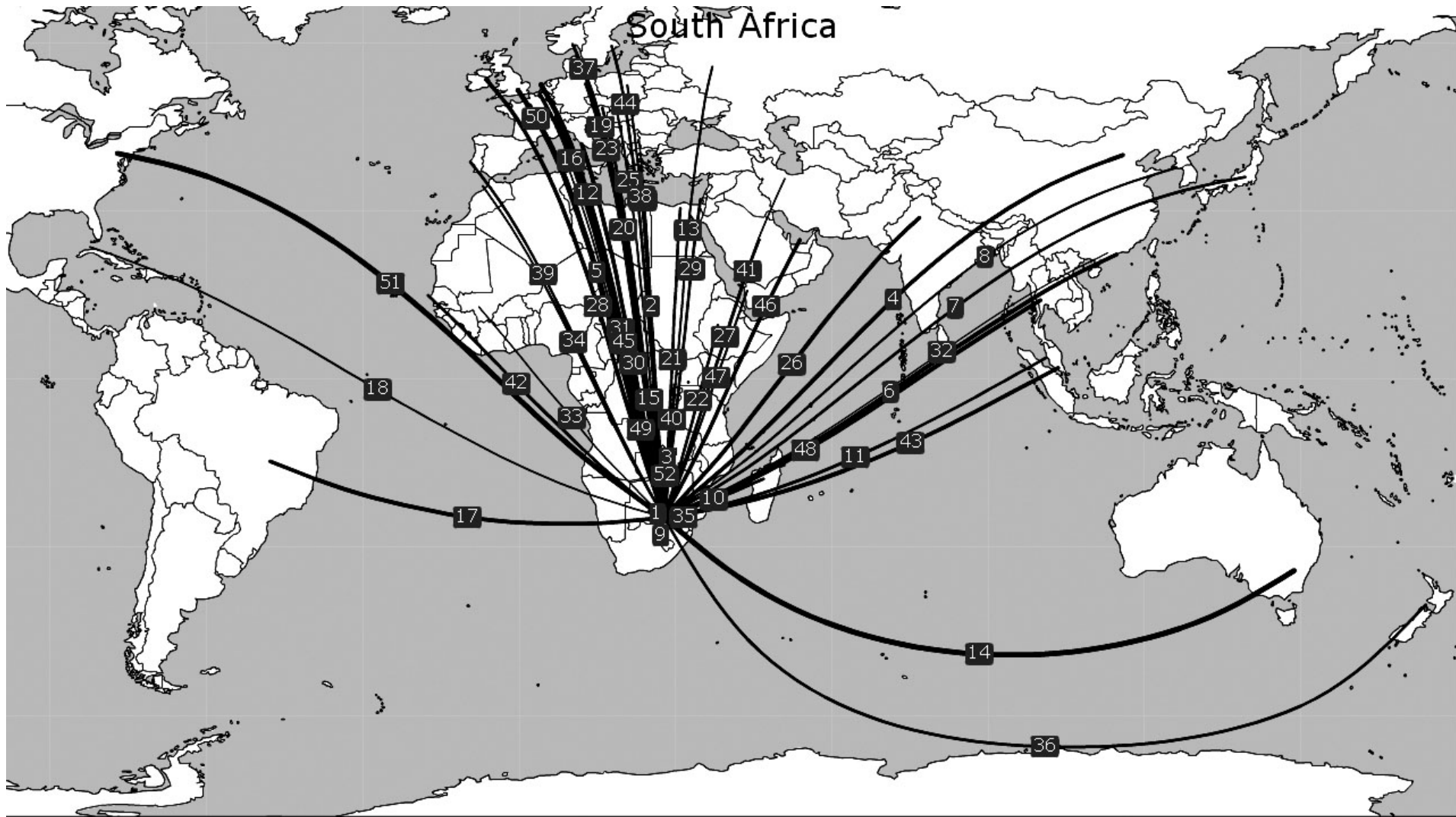
Countries or territories	Traffic range
Djibouti	1-500000
United Arab Emirates	1-500000
Kenya	1-500000

Countries or territories	Traffic range
Ethiopia	1-500000
Saudi Arabia	1-500000

SOUTH AFRICA

SOUTH AFRICA

South Africa



SOUTH AFRICA

Table 1
Selected indicators

STATISTICAL DATA						POLICY DATA			
General (2004)		Trade (2004)		Air transport (2004)		Trade (2006)		Air Transport (2005)	
Population (million)	45.51	Total trade (million US\$)	115,601	WASA traffic (passengers) (2005)	5,611,179	Final bound MFN tariffs (%)	19.1	Traffic weighted average ALI (Standard)	9.9
Share in world population (%)	0.71	Share in world trade (%)	0.52	Share of total WASA traffic (%) (2005)	0.81	Services sectors committed (out of ~160)	91	Traffic weighted average ALI (5th+)	10.9
GDP (million current US\$)	212,777	Trade per capita (US\$)	2,540	Number of planes (of which, in parenthesis, jets) (2005)	314 (178)	Tourism and travel-related services sectors committed (out of 3)	3	Traffic weighted average ALI (OWN+)	8.8
Share in world GDP (%)	0.52	Trade to GDP ratio (%)	54.3	Number of international airports (2005)	5	Services auxiliary to all modes of transport committed (out of 4)	0	Traffic weighted average ALI (DES+)	11.7
GDP per capita (current US\$)	4,675	Commercial services trade (million US\$)	18,846	Domestic traffic (passengers) (2005)	8,447,246	Air transport services sectors committed (out of 4)	0	Dispersion of ALI (standard)	0-21
Size (km ²)	1,214,470	Share in world commercial services trade (%)	0.44	Air transport services (million US\$)	...	MFN exemptions on air transport services	0	National ownership regime (2004)	...
Density (pop. by km ²)	37	Travel services (million US\$)	9,479	Passenger air transport services (million US\$)	...	Number of bilateral FTAs	3	Number of bilateral ASAs recorded by ICAO	52
				Freight air transport services (million US\$)	...	Number of regional FTAs	2	Number of plurilateral ASAs recorded by ICAO (2006)	1

SOUTH AFRICA

Chart 1

Share of traffic by ALI range
(percentage, 2005)

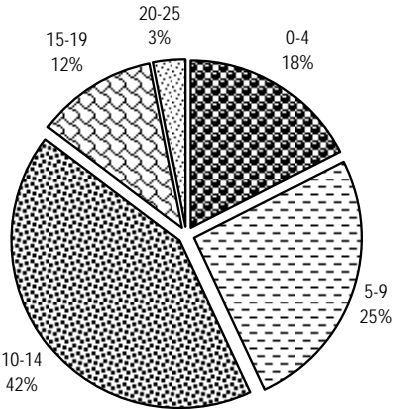


Chart 2

Share of traffic by type
(percentage, 2005)

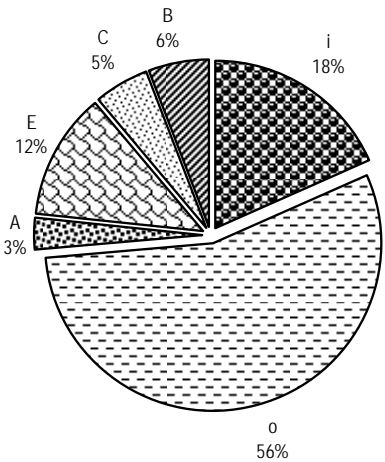
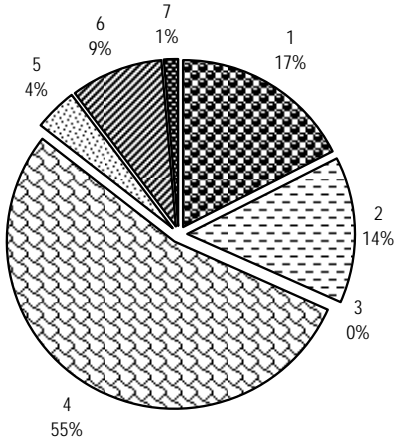


Chart 3

Share of traffic by region of partner
(percentage, 2005)

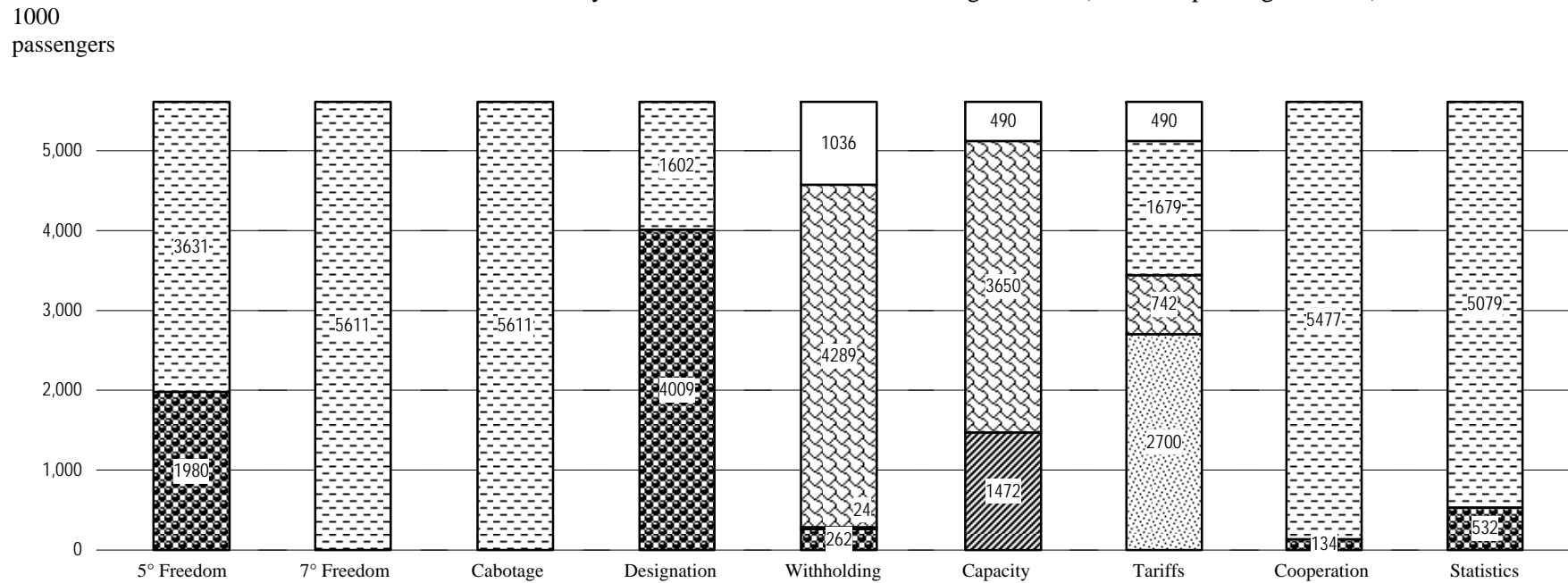


1 Africa; 2 Asia and Oceania;
3 Commonwealth of Independent States;
4 Europe; 5 Middle East; 6 North America;
7 South and Central America and the Caribbean

SOUTH AFRICA

Chart 4

Distribution of traffic by feature of bilateral Air Services Agreements (thousand passengers, 2005)



5° Freedom, 7° Freedom, Cabotage, Designation, Cooperation, Statistics

- With
- Without

Withholding

- Principal Place of Business
- Community of Interest
- Substantial Ownership and Effective Control
- Undetermined

Capacity

- Free Determination
- Bermuda I
- Pre-Determination
- Undetermined

Tariffs

- Free Pricing
- Zone Pricing
- Double Disapproval
- Country of Origin
- Double Approval
- Undetermined

SOUTH AFRICA

Table 2
Bilateral Air Services Agreements recorded by ICAO, selected indicators (2005)

Party	Date	Direct Services	ALI Standard	ALI 5th+	ALI OWN+	ALI DES+	Type	Distance (km)	Traffic Range (passengers)
UNITED KINGDOM	11/08/1992	Yes	14	12.0	12.0	16.5	o	9682	1000001-1500000
GERMANY	10/03/1998	Yes	7	6.0	6.0	10.0	i	9571	500001-1000000
UNITED STATES	30/10/1990	Yes	1	1.0	1.0	1.0	i	12582	1-500000
ZAMBIA	30/10/1992	Yes	10	15.5	8.5	13.0	E	2279	1-500000
BOTSWANA	23/07/1991	Yes	6	5.0	5.0	5.5	o	1251	1-500000
MOZAMBIQUE	10/05/2002	Yes	9	14.5	7.5	8.0	o	1622	1-500000
NETHERLANDS	26/05/1992	Yes	16	20.5	13.5	18.5	o	9694	1-500000
FRANCE	08/10/1993	Yes	10	15.5	8.5	13.0	E	9354	1-500000
AUSTRALIA	08/07/1995	Yes	16	20.5	13.5	18.5	o	11015	1-500000
UNITED ARAB EMIRATES	03/02/2001	Yes	16	20.5	13.5	18.5	o	7530	1-500000
HONG KONG, CHINA	18/03/2000	Yes	12	10.5	17.5	15.0	o	11877	1-500000
SWITZERLAND	19/10/1959	Yes	6	12.0	5.0	5.5	C	9070	1-500000
INDIA	05/12/1998	Yes	4	3.5	3.5	7.5	B	9311	1-500000
ITALY	21/05/1956	No	6	12.0	5.0	5.5	C	8460	1-500000
BRAZIL	26/11/1996	Yes	10	15.5	8.5	13.0	E	6355	1-500000
CHINA	02/02/1999	No	4	3.5	3.5	7.5	B	12968	1-500000
SINGAPORE	22/05/1992	Yes	16	20.5	13.5	18.5	o	9671	1-500000
BELGIUM	02/05/2000	No	0	0.0	0.0	0.0	A	9536	1-500000
THAILAND	04/03/1993	Yes	6	12.0	5.0	5.5	C	10150	1-500000
IRELAND	10/11/1994	No	10	8.5	8.5	13.0	o	10002	1-500000
SWEDEN	11/09/2001	No	21	18.0	25.0	23.0	o	10381	1-500000
MALAYSIA	05/01/1993	Yes	4	3.5	3.5	7.5	B	9589	1-500000
DENMARK	11/09/2001	No	21	18.0	25.0	23.0	o	9988	1-500000
ISRAEL	05/05/1953	Yes	7	13.0	6.0	6.5	i	7544	1-500000
PORTUGAL	23/05/1997	Yes	10	15.5	8.5	13.0	E	8574	1-500000
GREECE	19/11/1998	Yes	6	5.0	5.0	5.5	o	8025	1-500000
SAUDI ARABIA	28/05/2000	Yes	10	8.5	8.5	13.0	o	7174	1-500000

SOUTH AFRICA

Party	Date	Direct Services	ALI Standard	ALI 5th+	ALI OWN+	ALI DES+	Type	Distance (km)	Traffic Range (passengers)
AUSTRIA	20/02/1995	No	4	3.5	3.5	7.5	B	9146	1-500000
EGYPT	26/08/1997	Yes	6	5.0	5.0	5.5	o	7247	1-500000
NEW ZEALAND	19/08/1997	No	20	24.0	17.0	22.0	o	11004	1-500000
NORWAY	11/09/2001	No	21	18.0	25.0	23.0	o	10470	1-500000
LESOTHO	02/11/1990	Yes	0	0.0	0.0	0.0	A	996	1-500000
MADAGASCAR	14/08/1990	Yes	0	0.0	0.0	0.0	A	3327	1-500000
JAPAN	08/03/1994	No	10	15.5	8.5	13.0	E	14746	1-500000
ETHIOPIA	14/05/1997	Yes	0	0.0	0.0	0.0	A	5246	1-500000
SENEGAL	30/07/1996	Yes	10	15.5	12.0	9.0	o	6611	1-500000
KOREA, REPUBLIC OF	07/07/1995	No	4	3.5	3.5	7.5	B	13723	1-500000
RWANDA	11/11/1993	Yes	4	3.5	3.5	7.5	B	3760	1-500000
POLAND	03/09/1993	No	0	0.0	0.0	0.0	A	9595	1-500000
RUSSIAN FEDERATION	03/08/1992	No	10	8.5	8.5	13.0	o	10148	1-500000
CZECH REPUBLIC	16/08/1993	No	16	20.5	13.5	18.5	o	9361	1-500000
HUNGARY	31/08/1993	No	0	0.0	0.0	0.0	A	9064	1-500000
YEMEN	27/02/2000	Yes	6	5.0	5.0	5.5	o	6133	1-500000
MOROCCO	18/02/1994	No	4	3.5	3.5	7.5	B	8013	1-500000
BULGARIA	27/08/1993	No	16	20.5	13.5	18.5	o	8540	1-500000
TUNISIA	02/07/1997	No	4	3.5	3.5	7.5	B	7923	1-500000
MALI	09/07/2002	Yes	10	15.5	12.0	9.0	o	5895	1-500000
LUXEMBOURG	17/02/1994	No	16	20.5	13.5	18.5	o	9377	1-500000
IRAN, ISLAMIC REP. OF	27/01/2001	No	13	11.0	11.0	15.5	o	8471	1-500000
CUBA	27/03/2001	No	4	3.5	3.5	7.5	B	12388	1-500000
BURUNDI	06/02/1992	No	0	0.0	0.0	0.0	A	3583	1-500000
MACAO, CHINA	04/04/1998	No	18	15.5	22.5	20.5	o	11825	1-500000

SOUTH AFRICA

Table 3

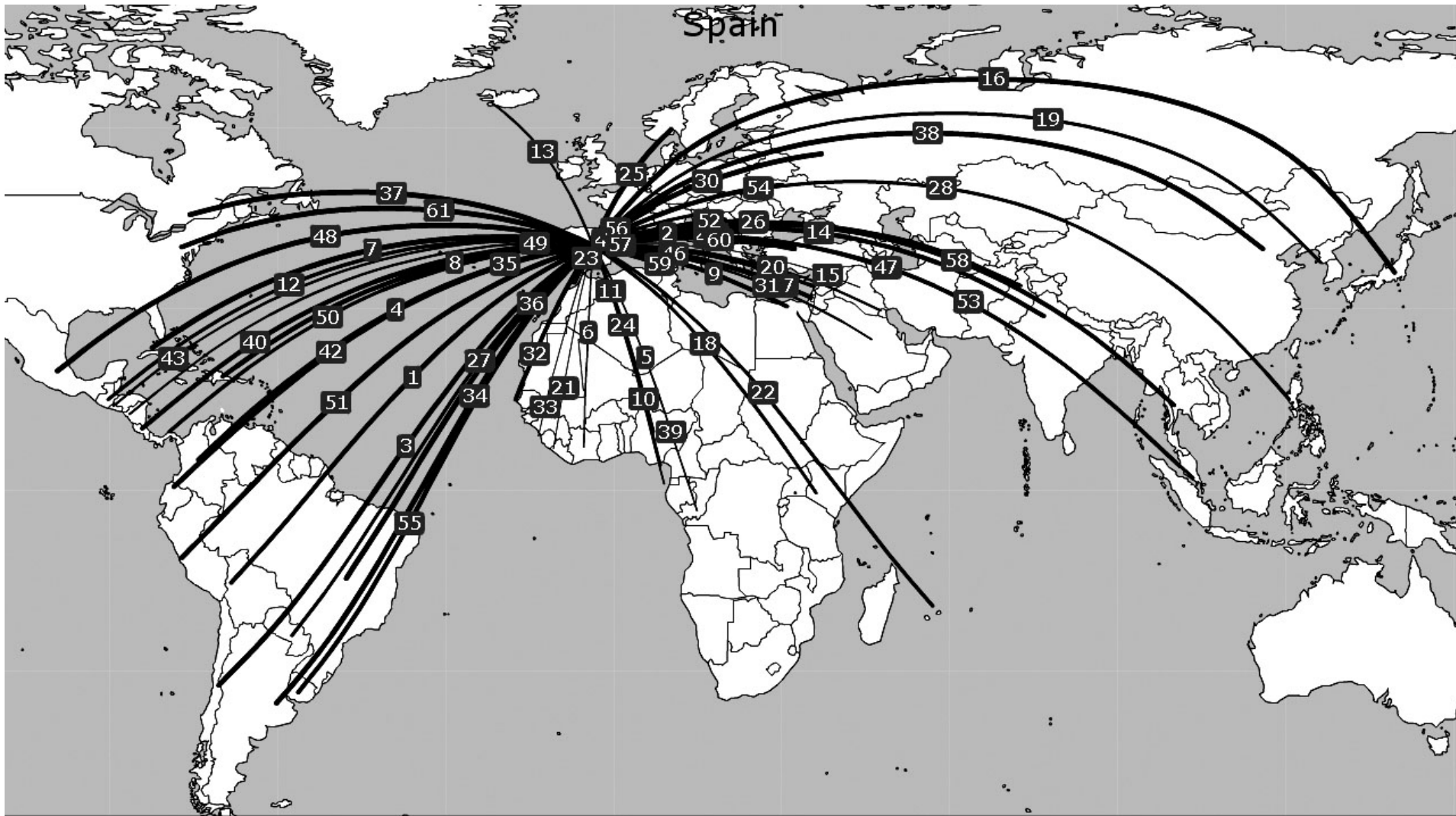
Direct air transportation services (passengers) not covered by a bilateral Air Services Agreement as recorded by ICAO (2005)

Countries or territories	Traffic range
Zimbabwe	1-500000
Namibia	1-500000
Mauritius	1-500000
Kenya	1-500000
Angola	1-500000
Tanzania	1-500000
Malawi	1-500000
Nigeria	1-500000
Spain	1-500000
Argentina	1-500000
Swaziland	1-500000
Côte d'Ivoire	1-500000
Uganda	1-500000

Countries or territories	Traffic range
Ghana	1-500000
Gabon	1-500000
Seychelles	1-500000
Cameroon	1-500000
Reunion	1-500000
Comoros	1-500000
Congo	1-500000
Cape Verde	1-500000
Qatar	1-500000
Bahrain	1-500000
Benin	1-500000
Chad	1-500000
Congo, Dem. Rep. of	...

SPAIN

SPAIN



SPAIN

Table 1
Selected indicators

STATISTICAL DATA						POLICY DATA			
General (2004)		Trade (2004)		Air transport (2004)		Trade (2006)		Air Transport (2005)	
Population (million)	42.69	Total trade (million US\$)	581,273	WASA traffic (passengers) (2005)	11,367,617	Final bound MFN tariffs (%)	4.1	Traffic weighted average ALI (Standard)	8.3
Share in world population (%)	0.67	Share in world trade (%)	2.60	Share of total WASA traffic (%) (2005)	1.63	Services sectors committed (out of ~160)	115	Traffic weighted average ALI (5th+)	11.2
GDP (million current US\$)	1,039,927	Trade per capita (US\$)	13,616	Number of planes (of which, in parenthesis, jets) (2005)	524 (409)	Tourism and travel-related services sectors committed (out of 3)	3	Traffic weighted average ALI (OWN+)	7.2
Share in world GDP (%)	2.52	Trade to GDP ratio (%)	55.9	Number of international airports (2005)	31	Services auxiliary to all modes of transport committed (out of 4)	3	Traffic weighted average ALI (DES+)	10.1
GDP per capita (current US\$)	24,360	Commercial services trade (million US\$)	144,125	Domestic traffic (passengers) (2005)	33,944,283	Air transport services sectors committed (out of 4)	CRS; Sell/Mark; Maint	Dispersion of ALI (standard)	0-27
Size (km ²)	499,210	Share in world commercial services trade (%)	3.34	Air transport services (million US\$)	13,041	MFN exemptions on air transport services	CRS; Sell/Mark	National ownership regime (2004)	Community of interest ¹
Density (pop. by km ²)	86	Travel services (million US\$)	57,220	Passenger air transport services (million US\$)	7,442	Number of bilateral FTAs	24 ²	Number of bilateral ASAs recorded by ICAO	61
				Freight air transport services (million US\$)	458	Number of regional FTAs	2 ²	Number of plurilateral ASAs recorded by ICAO (2006)	3

¹ The airline has to be established in the territory of Spain under the Treaty establishing the European Community; has to have received an Operating Licence in accordance with European Community law; effective regulatory control of the airline has to be exercised and maintained by the European Community Member State responsible for issuing its Air Operators Certificate; and the relevant aeronautical authority has to be clearly identified in the designation (Commission Decision of 29 March 2005 on approving the standard clauses for inclusion in bilateral Air Service Agreements between Member States and third countries jointly laid down by the Commission and the Member States.

² Via EC membership.

SPAIN

Chart 1

Share of traffic by ALI range
(percentage, 2005)

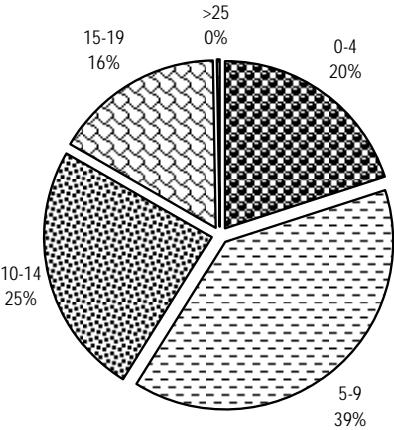


Chart 2

Share of traffic by type
(percentage, 2005)

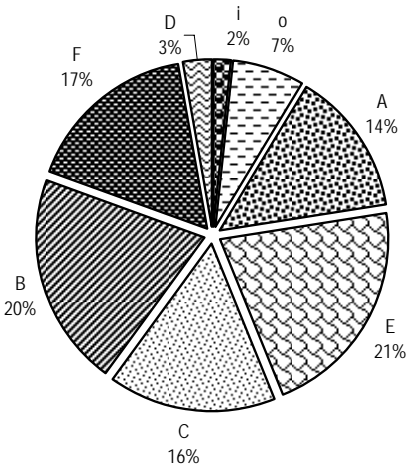
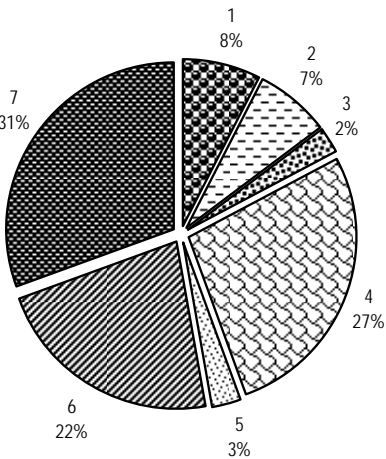


Chart 3

Share of traffic by region of partner
(percentage, 2005)

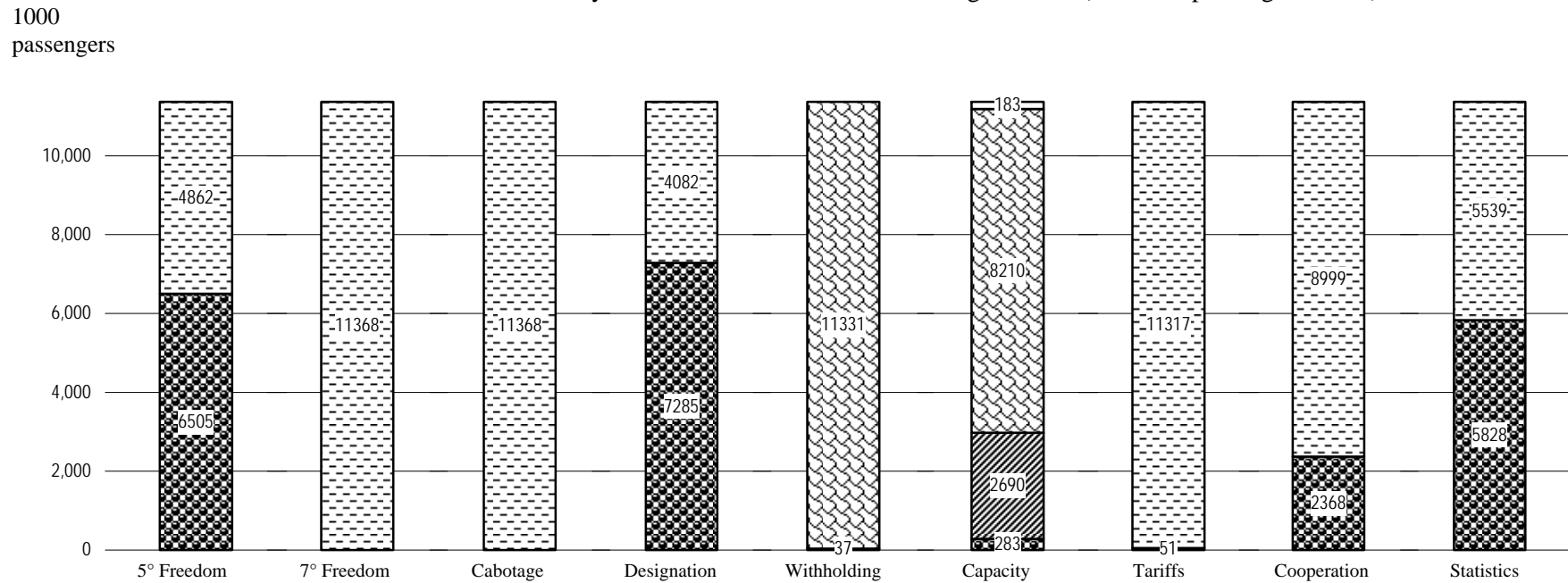


1 Africa; 2 Asia and Oceania;
3 Commonwealth of Independent States;
4 Europe; 5 Middle East; 6 North America;
7 South and Central America and the Caribbean

SPAIN

Chart 4

Distribution of traffic by feature of bilateral Air Services Agreements (thousand passengers, 2005)



5° Freedom, 7° Freedom, Cabotage,
Designation, Cooperation, Statistics

With
Without

Withholding

Principal Place of Business
Community of Interest
Substantial Ownership
and Effective Control
Undetermined

Capacity

Free Determination
Bermuda I
Pre-Determination
Undetermined

Tariffs

Free Pricing
Zone Pricing
Double Disapproval
Country of Origin
Double Approval
Undetermined

SPAIN

Table 2
Bilateral Air Services Agreements recorded by ICAO, selected indicators (2005)

Party	Date	Direct Services	ALI Standard	ALI 5th+	ALI OWN+	ALI DES+	Type	Distance (km)	Traffic Range (passengers)
UNITED STATES	20/02/1973	Yes	18	22.5	15.5	20.0	F	5770	1500001-2000000
SWITZERLAND	03/08/1950	Yes	5	4.5	4.5	8.5	B	1153	1500001-2000000
ARGENTINA	01/03/1947	Yes	11	16.5	9.5	14.0	E	10066	500001-1000000
NORWAY	05/05/1965	Yes	11	16.5	9.5	14.0	E	2391	500001-1000000
MEXICO	21/11/1978	Yes	0	0.0	0.0	0.0	A	9074	500001-1000000
BRAZIL	28/11/1949	Yes	10	15.5	8.5	13.0	E	8390	1-500000
MOROCCO	07/07/1970	Yes	8	7.0	7.0	11.0	o	763	1-500000
COLOMBIA	11/12/1951	Yes	7	13.0	6.0	6.5	C	8107	1-500000
TURKEY	15/07/1975	Yes	13	18.0	11.0	11.5	D	2740	1-500000
BOLIVARIAN REP. OF VENEZUELA	25/07/1972	Yes	0	0.0	0.0	0.0	A	6995	1-500000
CHINA	19/06/1978	Yes	8	7.0	7.0	7.5	o	9232	1-500000
ECUADOR	08/03/1974	Yes	6	12.0	5.0	5.5	C	8751	1-500000
DOMINICAN REPUBLIC	15/03/1968	Yes	4	3.5	3.5	7.5	B	6688	1-500000
CUBA	19/06/1951	Yes	6	12.0	5.0	5.5	C	7450	1-500000
PERU	31/03/1954	Yes	7	13.0	6.0	6.5	C	9522	1-500000
RUSSIAN FEDERATION	12/05/1976	Yes	0	0.0	0.0	0.0	A	3449	1-500000
CHILE	17/12/1974	Yes	7	13.0	6.0	6.5	C	10715	1-500000
CANADA	15/09/1988	Yes	10	15.5	8.5	13.0	E	6040	1-500000
ROMANIA	10/01/1980	Yes	4	3.5	3.5	7.5	i	2477	1-500000
JAPAN	18/03/1980	No	10	15.5	8.5	13.0	E	10777	1-500000
ISRAEL	31/07/1989	Yes	0	0.0	0.0	0.0	A	3546	1-500000
TUNISIA	11/01/1977	Yes	0	0.0	0.0	0.0	A	1274	1-500000
EGYPT	12/03/1991	Yes	4	3.5	3.5	7.5	B	3356	1-500000
BULGARIA	06/11/1971	Yes	6	12.0	5.0	5.5	C	2255	1-500000
INDIA	10/04/1987	No	6	12.0	5.0	5.5	C	7282	1-500000
BOLIVIA	12/09/1974	Yes	6	12.0	5.0	5.5	C	9181	1-500000

SPAIN

COSTA RICA	16/11/1979	Yes	0	0.0	0.0	0.0	A	8484	1-500000
THAILAND	06/09/1979	Yes	6	12.0	5.0	5.5	C	10194	1-500000
URUGUAY	13/08/1979	Yes	10	15.5	8.5	13.0	E	9957	1-500000
UKRAINE	07/10/1996	Yes	7	6.0	6.0	10.0	B	2864	1-500000
SENEGAL	26/08/1968	Yes	4	3.5	3.5	7.5	B	3164	1-500000
JORDAN	18/05/1977	Yes	5	4.5	4.5	4.5	o	3652	1-500000
KOREA, REPUBLIC OF	21/06/1989	No	0	0.0	0.0	0.0	A	10013	1-500000
PANAMA	07/08/2001	Yes	27	30.0	30.0	28.5	o	8170	1-500000
MAURITANIA	11/05/1965	Yes	4	3.5	3.5	7.5	B	2742	1-500000
KENYA	03/03/1981	No	6	12.0	5.0	5.5	C	6197	1-500000
PHILIPPINES	06/10/1951	No	10	15.5	8.5	13.0	E	11665	1-500000
PAKISTAN	19/06/1979	No	6	12.0	5.0	5.5	C	6652	1-500000
EQUATORIAL GUINEA	24/07/1971	Yes	8	7.0	7.0	11.0	o	4270	1-500000
SYRIAN ARAB REPUBLIC	01/02/1979	Yes	0	0.0	0.0	0.0	A	3611	1-500000
CROATIA	21/07/1997	No	7	6.0	6.0	10.0	B	1702	1-500000
PARAGUAY	12/05/1976	No	14	19.0	12.0	16.5	F	9194	1-500000
GUATEMALA	03/05/1971	Yes	10	15.5	8.5	13.0	E	8701	1-500000
SERBIA AND MONTENEGRO	11/04/1979	No	0	0.0	0.0	0.0	A	2035	1-500000
NIGERIA	26/03/1975	Yes	6	12.0	5.0	5.5	C	3848	1-500000
SINGAPORE	11/03/1992	No	7	6.0	6.0	10.0	B	11400	1-500000
NICARAGUA	24/07/1992	No	10	15.5	8.5	13.0	E	8524	1-500000
SAUDI ARABIA	29/09/1987	No	0	0.0	0.0	0.0	A	4976	1-500000
EL SALVADOR	10/03/1997	No	13	11.0	11.0	15.5	o	8656	1-500000
ICELAND	01/12/1965	Yes	11	16.5	9.5	14.0	E	2895	1-500000
MALAYSIA	23/03/1993	No	10	15.5	8.5	13.0	E	11085	1-500000
IRAN, ISLAMIC REP. OF	24/06/1996	No	0	0.0	0.0	0.0	A	4785	1-500000
KUWAIT	03/12/1979	No	6	12.0	5.0	5.5	C	4809	1-500000
CÔTE D'IVOIRE	15/07/1976	No	6	12.0	5.0	5.5	C	3907	1-500000
FYR MACEDONIA	02/03/1999	No	4	3.5	3.5	7.5	B	2108	1-500000
GABON	03/05/1976	No	6	12.0	5.0	5.5	C	4650	1-500000

SPAIN

CONGO, DEM. REPUBLIC OF	14/06/1969	No	12	17.0	10.0	14.5	i	5342	1-500000
CONGO	08/01/1986	No	0	0.0	0.0	0.0	A	5333	1-500000
LIBERIA	20/08/1977	No	6	5.0	5.0	9.0	i	3858	1-500000
SIERRA LEONE	04/06/1976	No	6	12.0	5.0	5.5	C	3677	1-500000
IRAQ	12/06/1980	No	4	3.5	3.5	3.5	o	4305	<1

Table 3

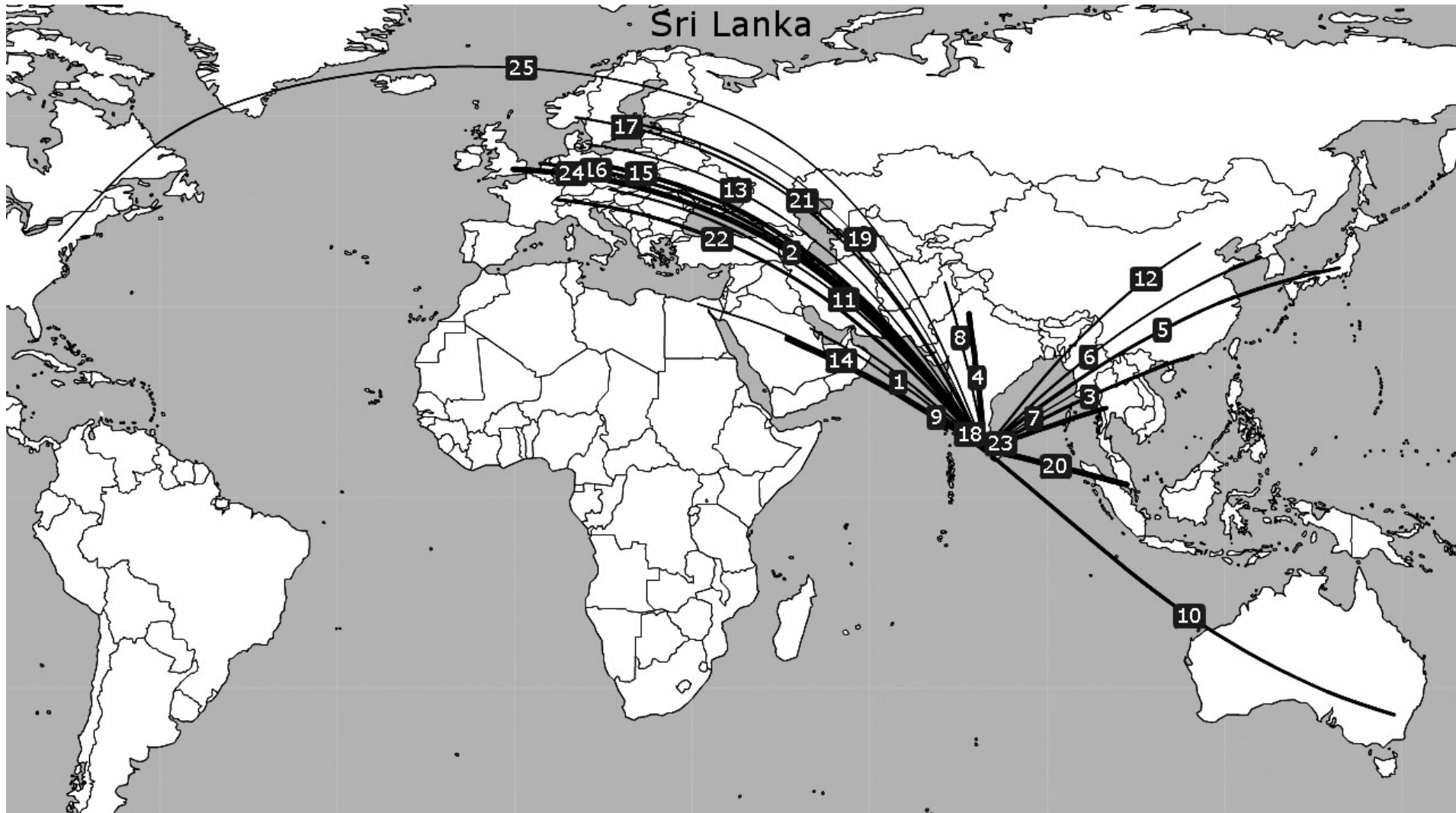
Direct air transportation services (passengers) not covered by a bilateral Air Services Agreement as recorded by ICAO (2005)

Countries or territories	Traffic range
Algeria	1-500000
South Africa	1-500000
Lebanon	1-500000
Cape Verde	1-500000

Countries or territories	Traffic range
Honduras	1-500000
Qatar	1-500000
Puerto Rico	...

SRI LANKA

SRI LANKA



SRI LANKA

Table 1
Selected indicators

STATISTICAL DATA						POLICY DATA			
General (2004)		Trade (2004)		Air transport (2004)		Trade (2006)		Air Transport (2005)	
Population (million)	19.42	Total trade (million US\$)	16,336	WASA traffic (passengers) (2005)	1,778,863	Final bound MFN tariffs (%)	29.8	Traffic weighted average ALI (Standard)	8.6
Share in world population (%)	0.31	Share in world trade (%)	0.07	Share of total WASA traffic (%) (2005)	0.26	Services sectors committed (out of ~160)	27	Traffic weighted average ALI (5th+)	12.3
GDP (million current US\$)	20,055	Trade per capita (US\$)	841	Number of planes (of which, in parenthesis, jets) (2005)	21 (16)	Tourism and travel-related services sectors committed (out of 3)	2	Traffic weighted average ALI (OWN+)	7.5
Share in world GDP (%)	0.05	Trade to GDP ratio (%)	81.5	Number of international airports (2005)	1	Services auxiliary to all modes of transport committed (out of 4)	0	Traffic weighted average ALI (DES+)	9.6
GDP per capita (current US\$)	1,033	Commercial services trade (million US\$)	3,379	Domestic traffic (passengers) (2005)	0	Air transport services sectors committed (out of 4)	0	Dispersion of ALI (standard)	0-28
Size (km ²)	64,630	Share in world commercial services trade (%)	0.08	Air transport services (million US\$)	...	MFN exemptions on air transport services	0	National ownership regime (2004)	...
Density (pop. by km ²)	300	Travel services (million US\$)	809	Passenger air transport services (million US\$)	...	Number of bilateral FTAs	2	Number of bilateral ASAs recorded by ICAO	25
				Freight air transport services (million US\$)	...	Number of regional FTAs	4	Number of plurilateral ASAs recorded by ICAO (2006)	0

SRI LANKA

Chart 1

Share of traffic by ALI range
(percentage, 2005)

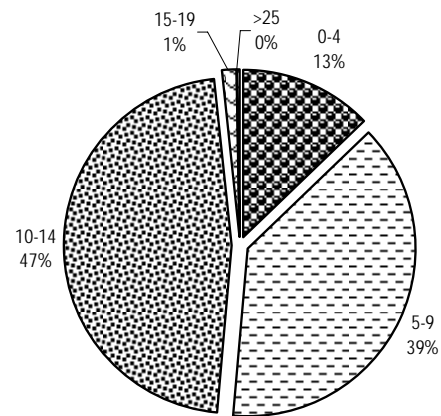


Chart 2

Share of traffic by type
(percentage, 2005)

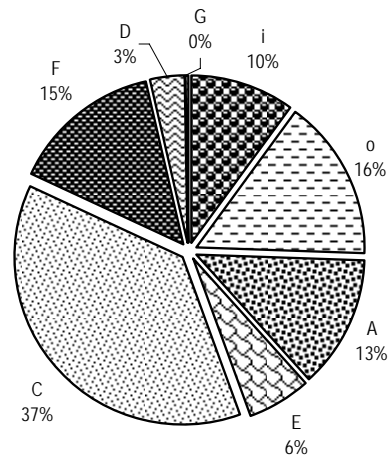
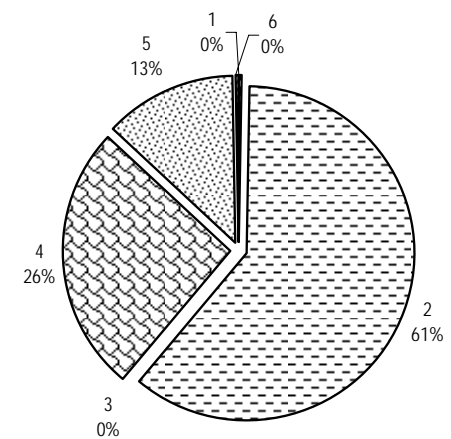


Chart 3

Share of traffic by region of partner
(percentage, 2005)

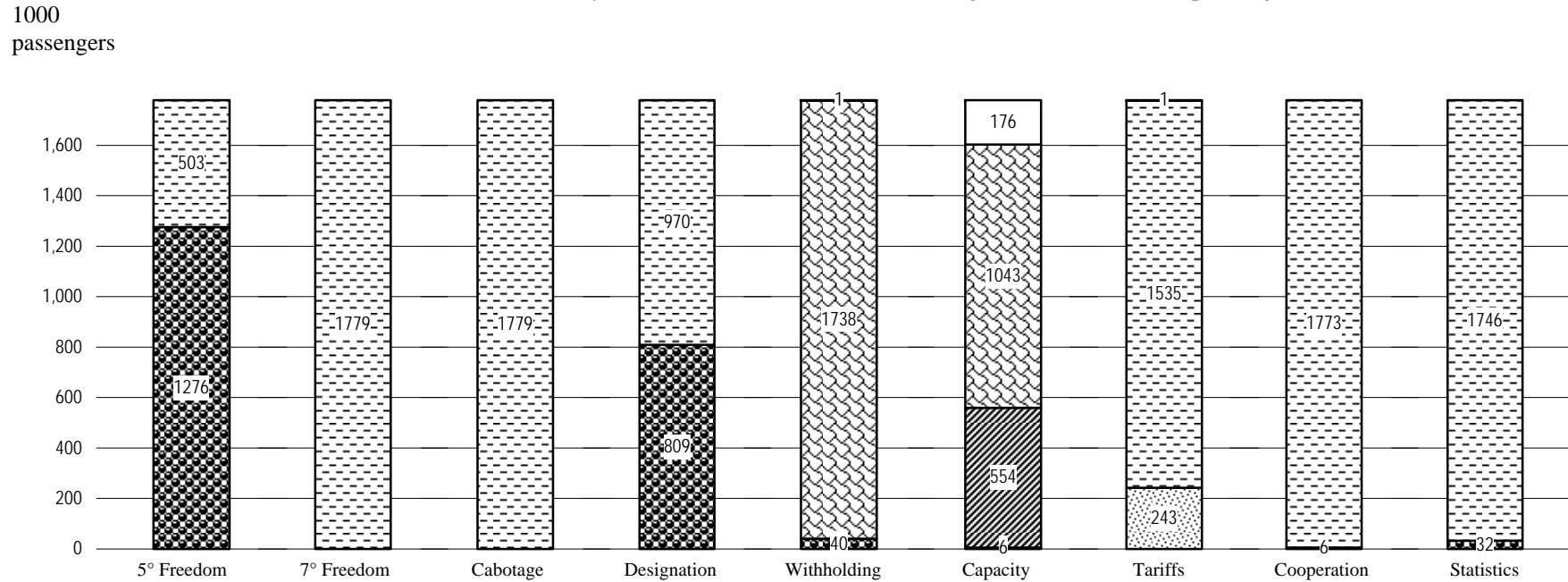


1 Africa; 2 Asia and Oceania;
3 Commonwealth of Independent States;
4 Europe; 5 Middle East; 6 North America;
7 South and Central America and the Caribbean

SRI LANKA

Chart 4

Distribution of traffic by feature of bilateral Air Services Agreements (thousand passengers, 2005)



5° Freedom, 7° Freedom, Cabotage, Designation, Cooperation, Statistics

- With
- Without

Withholding

- Principal Place of Business
- Community of Interest
- Substantial Ownership and Effective Control
- Undetermined

Capacity

- Free Determination
- Bermuda I
- Pre-Determination
- Undetermined

Tariffs

- Free Pricing
- Zone Pricing
- Double Disapproval
- Country of Origin
- Double Approval
- Undetermined

SRI LANKA

Table 2
Bilateral Air Services Agreements recorded by ICAO, selected indicators (2005)

Party	Date	Direct Services	ALI Standard	ALI 5th+	ALI OWN+	ALI DES+	Type	Distance (km)	Traffic Range (passengers)
INDIA	21/12/1948	Yes	6	12.0	5.0	5.5	C	2431	500001-1000000
UNITED KINGDOM	22/04/1998	Yes	14	12.0	12.0	16.5	o	8725	1-500000
SINGAPORE	29/08/1985	Yes	14	19.0	12.0	16.5	F	2734	1-500000
SAUDI ARABIA	08/06/1991	Yes	0	0.0	0.0	0.0	A	4039	1-500000
THAILAND	24/02/1950	Yes	12	17.0	10.0	14.5	i	2382	1-500000
GERMANY	24/07/1973	Yes	6	12.0	5.0	5.5	C	8232	1-500000
AUSTRALIA	12/01/1950	No	10	15.5	8.5	13.0	E	8752	1-500000
SWITZERLAND	19/05/1966	No	10	15.5	8.5	9.0	D	8124	1-500000
HONG KONG, CHINA	31/03/1993	Yes	12	10.5	17.5	15.0	o	4053	1-500000
JAPAN	22/02/1984	Yes	10	15.5	8.5	13.0	E	6861	1-500000
NETHERLANDS	14/09/1953	Yes	15	20.0	13.0	17.5	F	8388	1-500000
PAKISTAN	03/01/1949	Yes	8	13.5	6.5	7.0	i	3057	1-500000
OMAN	29/11/1981	Yes	0	0.0	0.0	0.0	A	2933	1-500000
BAHRAIN	23/10/1996	Yes	6	12.0	5.0	5.5	C	3768	1-500000
CHINA	26/03/1959	Yes	0	0.0	0.0	0.0	A	5171	1-500000
KOREA, REPUBLIC OF	20/01/1978	No	10	15.5	8.5	9.0	D	5841	1-500000
NORWAY	29/05/1959	No	10	15.5	8.5	13.0	E	8197	1-500000
AUSTRIA	15/02/1978	Yes	6	12.0	5.0	5.5	C	7497	1-500000
SWEDEN	29/05/1959	No	10	15.5	8.5	13.0	E	7784	1-500000
UNITED STATES	11/06/2002	No	28	31.0	24.0	29.5	G	14093	1-500000
DENMARK	29/05/1959	No	10	15.5	8.5	13.0	E	7969	1-500000
EGYPT	26/09/1950	No	12	17.0	10.0	14.5	i	5684	1-500000
CZECH REPUBLIC	30/11/1977	Yes	10	15.5	8.5	9.0	D	7688	1-500000
RUSSIAN FEDERATION	22/02/1964	No	7	13.0	6.0	6.5	i	6577	1-500000
MYANMAR	29/06/1950	No	11	16.5	9.5	10.0	i	2085	1-500000

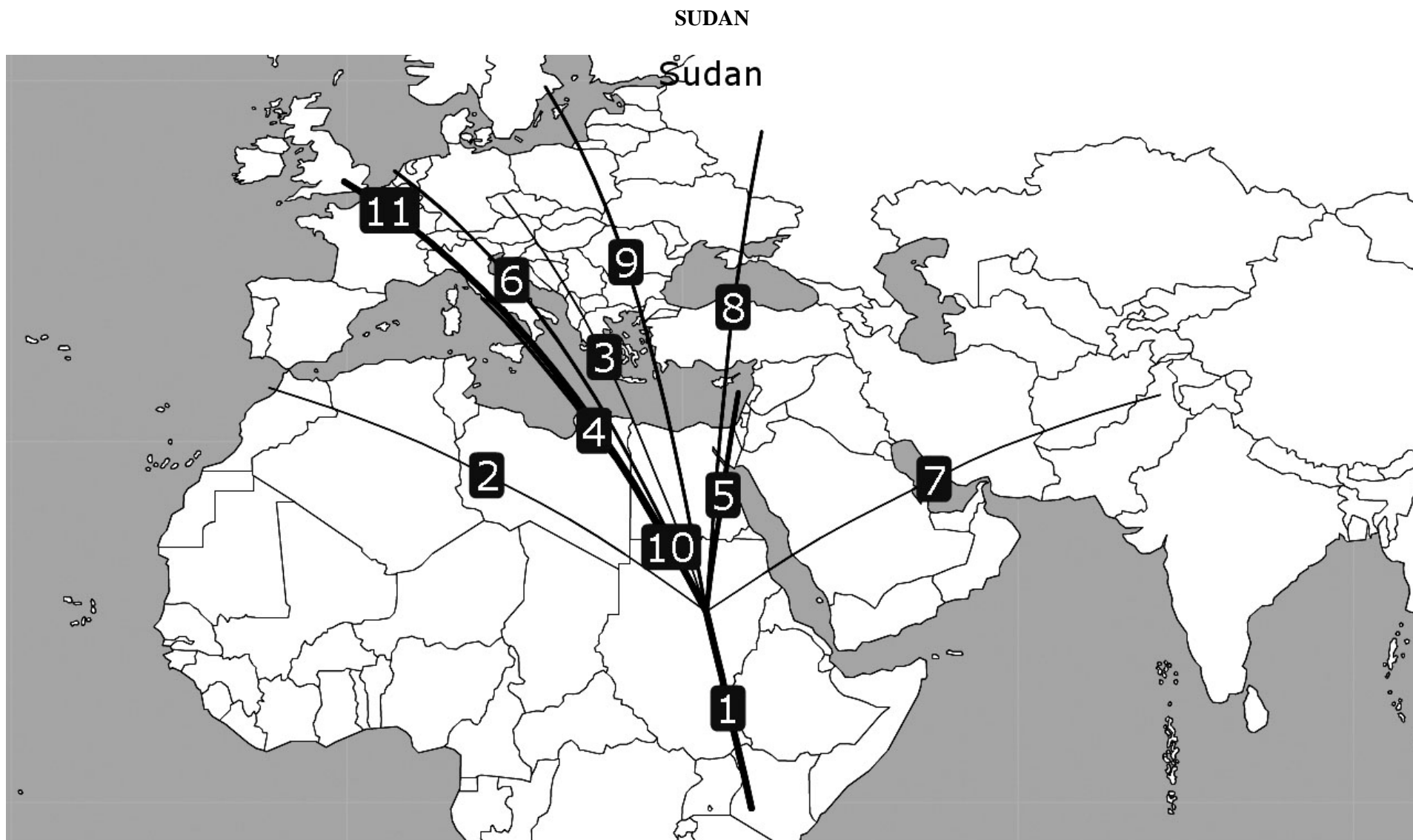
Table 3

Direct air transportation services (passengers) not covered by a bilateral Air Services Agreement as recorded by ICAO (2005)

Countries or territories	Traffic range
United Arab Emirates	1-500000
Maldives	1-500000
Malaysia	1-500000
Qatar	1-500000
Kuwait	1-500000

Countries or territories	Traffic range
France	1-500000
Italy	1-500000
Jordan	1-500000
Indonesia	1-500000

SUDAN



SUDAN

Table 1
Selected indicators

STATISTICAL DATA						POLICY DATA			
General (2004)		Trade (2004)		Air transport (2004)		Trade (2006)		Air Transport (2005)	
Population (million)	35.52	Total trade (million US\$)	8,422	WASA traffic (passengers) (2005)	101,069	Final bound MFN tariffs (%)	-	Traffic weighted average ALI (Standard)	10.0
Share in world population (%)	0.56	Share in world trade (%)	0.04	Share of total WASA traffic (%) (2005)	0.01	Services sectors committed (out of ~160)	-	Traffic weighted average ALI (5th+)	15.5
GDP (million current US\$)	21,098	Trade per capita (US\$)	237	Number of planes (of which, in parenthesis, jets) (2005)	60 (18)	Tourism and travel-related services sectors committed (out of 3)	-	Traffic weighted average ALI (OWN+)	8.5
Share in world GDP (%)	0.05	Trade to GDP ratio (%)	39.9	Number of international airports (2005)	7	Services auxiliary to all modes of transport committed (out of 4)	-	Traffic weighted average ALI (DES+)	11.3
GDP per capita (current US\$)	594	Commercial services trade (million US\$)	1,058	Domestic traffic (passengers) (2005)	185,361	Air transport services sectors committed (out of 4)	-	Dispersion of ALI (standard)	0-14
Size (km²)	2,376,000	Share in world commercial services trade (%)	0.02	Air transport services (million US\$)	...	MFN exemptions on air transport services	-	National ownership regime (2004)	...
Density (pop. by km²)	15	Travel services (million US\$)	197	Passenger air transport services (million US\$)	...	Number of bilateral FTAs	0	Number of bilateral ASAs recorded by ICAO	11
				Freight air transport services (million US\$)	...	Number of regional FTAs	3	Number of plurilateral ASAs recorded by ICAO (2006)	3

SUDAN

Chart 1

Share of traffic by ALI range
(percentage, 2005)

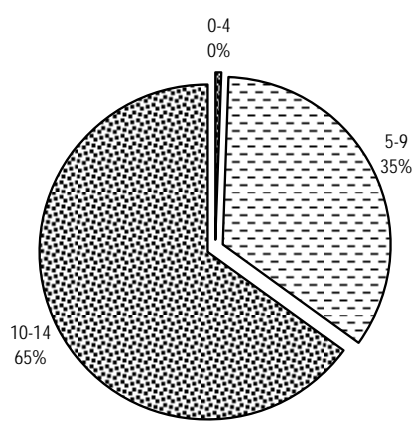


Chart 2

Share of traffic by type
(percentage, 2005)

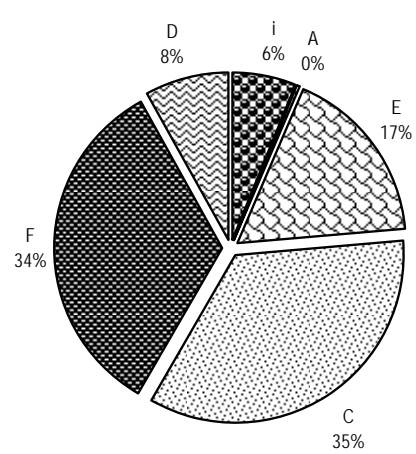
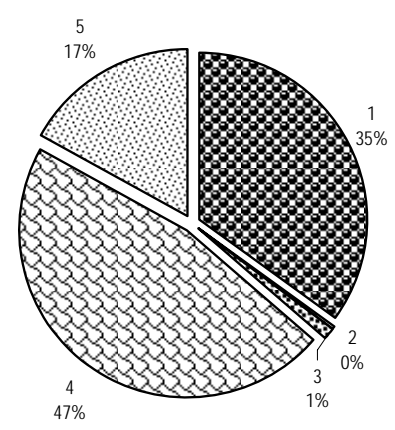


Chart 3

Share of traffic by region of partner
(percentage, 2005)

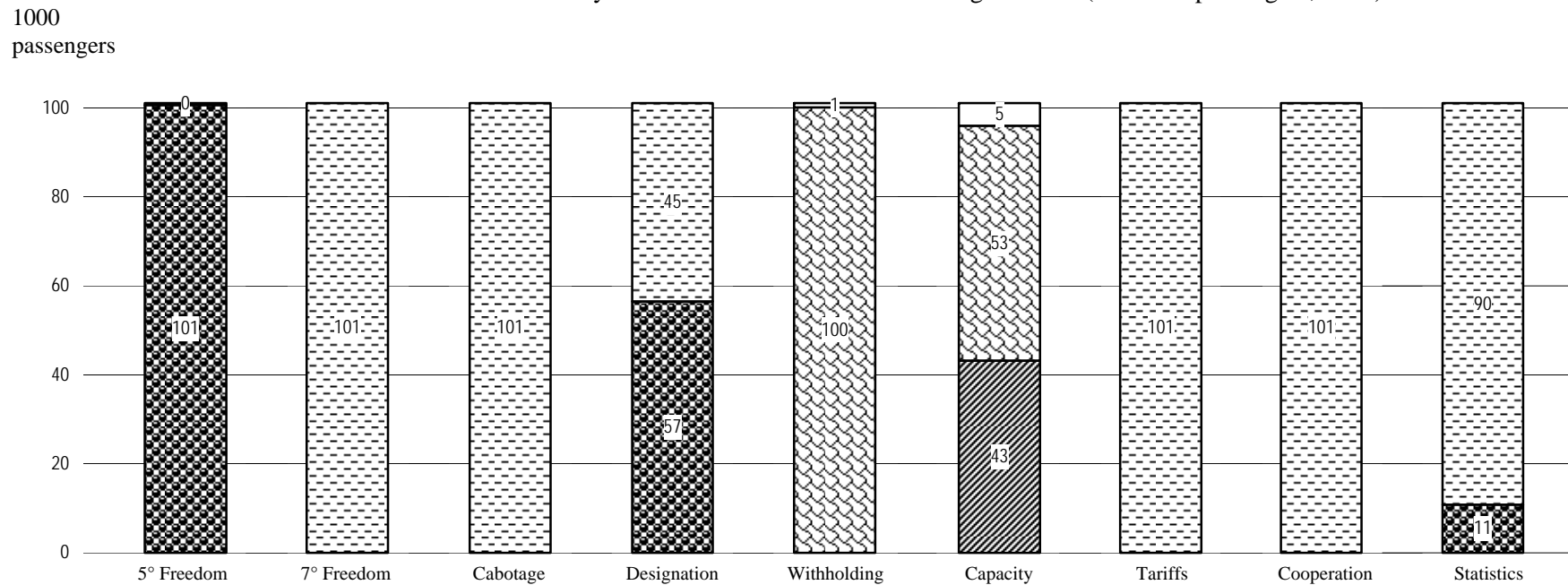


1 Africa; 2 Asia and Oceania;
3 Commonwealth of Independent States;
4 Europe; 5 Middle East; 6 North America;
7 South and Central America and the Caribbean

SUDAN

Chart 4

Distribution of traffic by feature of bilateral Air Services Agreements (thousand passengers, 2005)



5° Freedom, 7° Freedom, Cabotage, Designation, Cooperation, Statistics

- With
- Without

Withholding

- Principal Place of Business
- Community of Interest
- Substantial Ownership and Effective Control
- Undetermined

Capacity

- Free Determination
- Bermuda I
- Pre-Determination
- Undetermined

Tariffs

- Free Pricing
- Zone Pricing
- Double Disapproval
- Country of Origin
- Double Approval
- Undetermined

SUDAN

Table 2
Bilateral Air Services Agreements recorded by ICAO, selected indicators (2005)

Party	Date	Direct Services	ALI Standard	ALI 5th+	ALI OWN+	ALI DES+	Type	Distance (km)	Traffic Range (passengers)
KENYA	27/02/1981	Yes	6	12.0	5.0	5.5	C	1932	1-500000
UNITED KINGDOM	16/01/1961	Yes	14	19.0	12.0	16.5	F	4942	1-500000
LEBANON	02/09/1971	Yes	10	15.5	8.5	13.0	E	2060	1-500000
ITALY	04/09/1975	No	11	16.5	9.5	10.0	D	3504	1-500000
NETHERLANDS	12/02/1956	Yes	11	16.5	9.5	14.0	i	4765	1-500000
SWITZERLAND	18/02/1963	No	10	15.5	8.5	9.0	D	4194	1-500000
SWEDEN	17/02/1958	No	14	19.0	12.0	16.5	F	5015	1-500000
RUSSIAN FEDERATION	20/10/1962	No	10	15.5	8.5	9.0	i	4496	1-500000
PAKISTAN	23/02/1975	No	0	0.0	0.0	0.0	A	4537	1-500000
MOROCCO	24/06/1978	No	11	16.5	9.5	14.0	E	4441	1-500000
CZECH REPUBLIC	14/05/1966	No	14	19.0	12.0	16.5	F	4177	1-500000

Table 3
Direct air transportation services (passengers) not covered by a bilateral Air Services Agreement as recorded by ICAO (2005)

Countries or territories	Traffic range
Saudi Arabia	1-500000
United Arab Emirates	1-500000
Egypt	1-500000
Qatar	1-500000
Syrian Arab Republic	1-500000
Jordan	1-500000
Nigeria	1-500000
Libyan Arab Jamahiriya	1-500000
Yemen	1-500000
Ethiopia	1-500000
France	1-500000

Countries or territories	Traffic range
Comoros	1-500000
Chad	1-500000
Oman	1-500000
Germany	1-500000
Eritrea	1-500000
Bahrain	1-500000
Central African Republic	1-500000
Turkey	1-500000
Niger	1-500000
Uganda	1-500000

SURINAME

SURINAME

Suriname

3
1

SURINAME

Table 1
Selected indicators

STATISTICAL DATA						POLICY DATA			
General (2004)		Trade (2004)		Air transport (2004)		Trade (2006)		Air Transport (2005)	
Population (million)	0.45	Total trade (million US\$)	1,902	WASA traffic (passengers) (2005)	44,726	Final bound MFN tariffs (%)	18.5	Traffic weighted average ALI (Standard)	13.6
Share in world population (%)	0.01	Share in world trade (%)	0.01	Share of total WASA traffic (%) (2005)	0.01	Services sectors committed (out of ~160)	12	Traffic weighted average ALI (5th+)	18.6
GDP (million current US\$)	1,109	Trade per capita (US\$)	4,261	Number of planes (of which, in parenthesis, jets) (2005)	8 (2)	Tourism and travel-related services sectors committed (out of 3)	2	Traffic weighted average ALI (OWN+)	15.0
Share in world GDP (%)	0.00	Trade to GDP ratio (%)	171.5	Number of international airports (2005)	2	Services auxiliary to all modes of transport committed (out of 4)	0	Traffic weighted average ALI (DES+)	15.9
GDP per capita (current US\$)	2,484	Commercial services trade (million US\$)	380	Domestic traffic (passengers) (2005)	6,959	Air transport services sectors committed (out of 4)	CRS; Sell/Mark; Maint	Dispersion of ALI (standard)	6-14
Size (km ²)	156,000	Share in world commercial services trade (%)	0.01	Air transport services (million US\$)	179	MFN exemptions on air transport services	0	National ownership regime (2004)	SOEC ¹
Density (pop. by km ²)	3	Travel services (million US\$)	31	Passenger air transport services (million US\$)	106	Number of bilateral FTAs	3	Number of bilateral ASAs recorded by ICAO	3
				Freight air transport services (million US\$)	40	Number of regional FTAs	1	Number of plurilateral ASAs recorded by ICAO (2006)	2

¹ In dealing with airline designation in the future, Suriname is willing to accept criteria other than the traditional ownership and control for itself and its foreign partners, after the amendment of the relevant legislation.

SURINAME

Chart 1
Share of traffic by ALI range
(percentage, 2005)

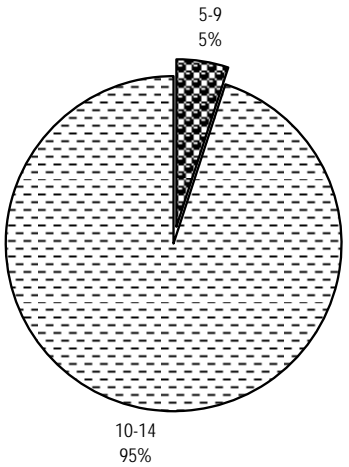


Chart 2
Share of traffic by type
(percentage, 2005)

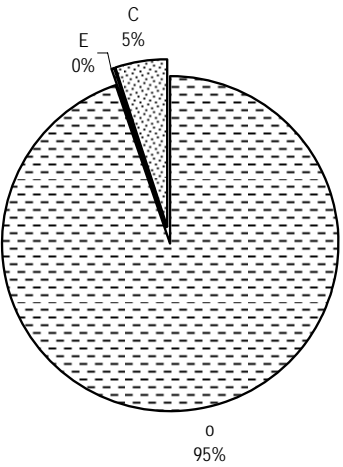
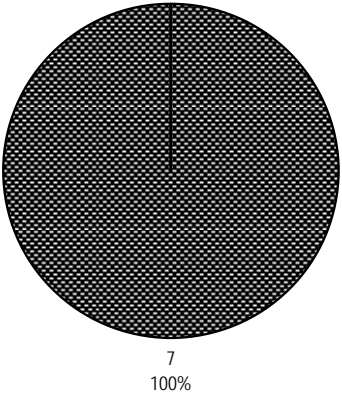


Chart 3
Share of traffic by region of partner
(percentage, 2005)

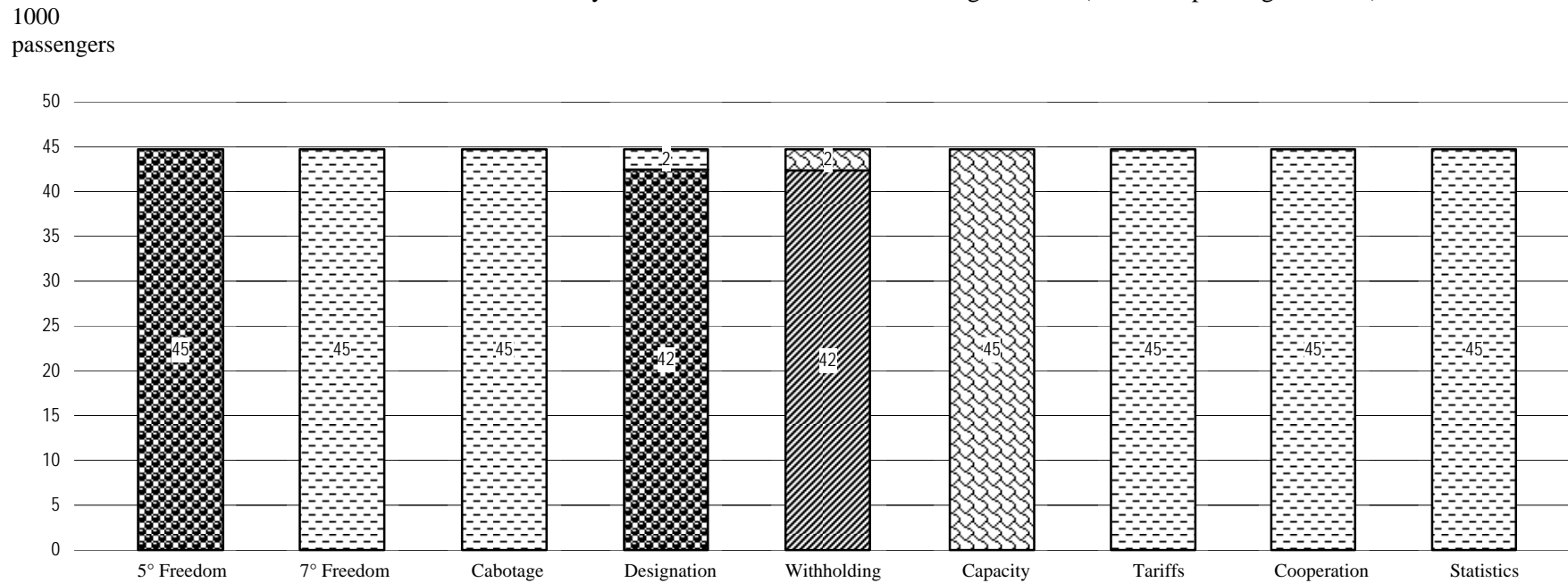


1 Africa; 2 Asia and Oceania;
3 Commonwealth of Independent States;
4 Europe; 5 Middle East; 6 North America;
7 South and Central America and the Caribbean

SURINAME

Chart 4

Distribution of traffic by feature of bilateral Air Services Agreements (thousand passengers, 2005)



5° Freedom, 7° Freedom, Cabotage, Designation, Cooperation, Statistics



With



Without

Withholding



Principal Place of Business



Community of Interest



Substantial Ownership and Effective Control



Undetermined

Capacity



Free Determination



Bermuda I



Pre-Determination



Undetermined

Tariffs



Free Pricing



Zone Pricing



Double Disapproval



Country of Origin



Double Approval



Undetermined

SURINAME

Table 2

Bilateral Air Services Agreements recorded by ICAO, selected indicators (2005)

Party	Date	Direct Services	ALI Standard	ALI 5th+	ALI OWN+	ALI DES+	Type	Distance (km)	Traffic Range (passengers)
TRINIDAD AND TOBAGO	18/08/1993	Yes	14	19.0	15.5	16.5	o	872	1-500000
BARBADOS	04/04/1996	No	6	12.0	5.0	5.5	C	938	1-500000
GRENADA	17/05/1996	No	10	15.5	8.5	13.0	E	993	1-500000

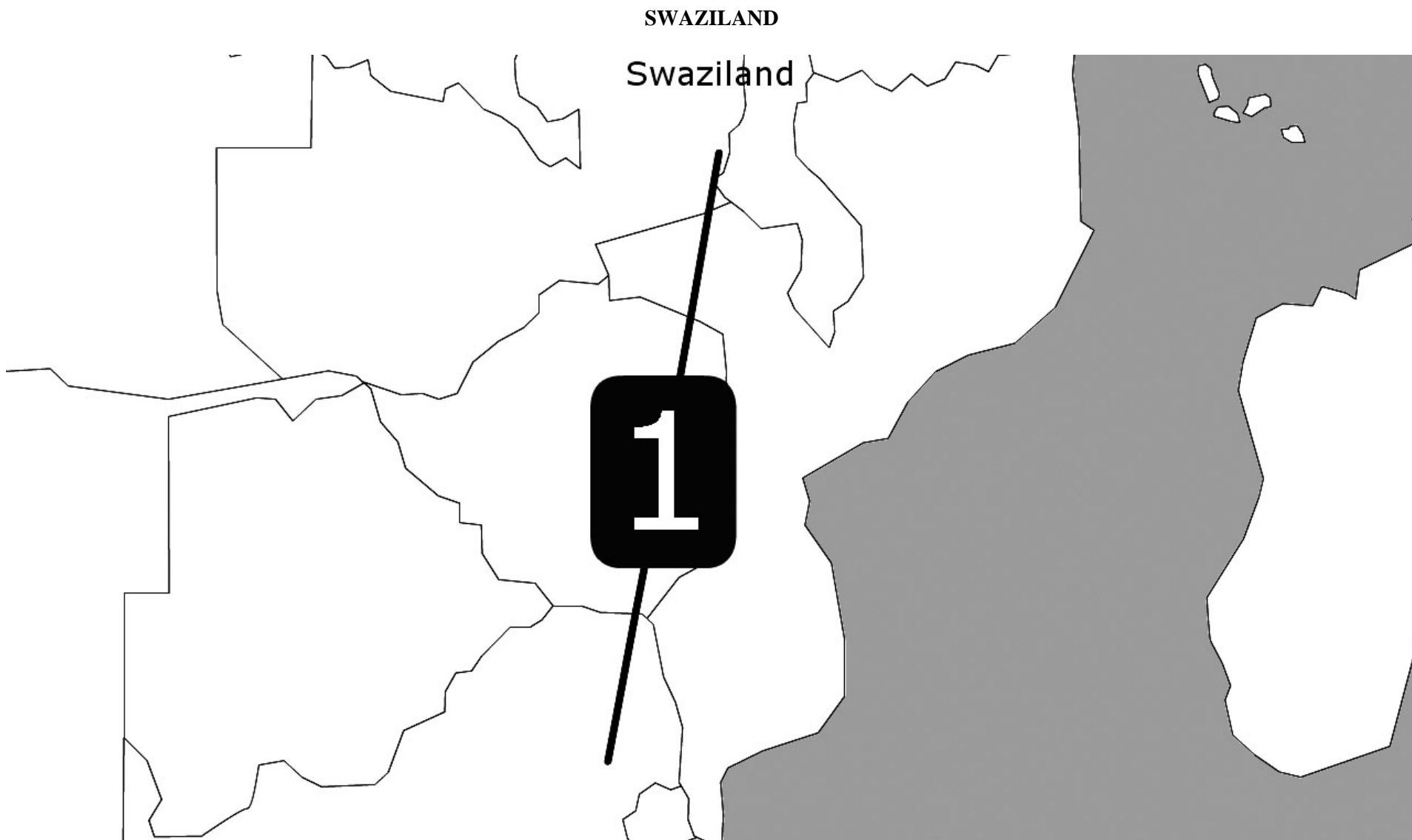
Table 3

Direct air transportation services (passengers) not covered by a bilateral Air Services Agreement as recorded by ICAO (2005)

Countries or territories	Traffic range
Netherlands	1-500000
Brazil	1-500000
Netherlands Antilles	1-500000

Countries or territories	Traffic range
Guyana	1-500000
Aruba	1-500000
Jamaica	1-500000

SWAZILAND



SWAZILAND

Swaziland

SWAZILAND

Table 1
Selected indicators

STATISTICAL DATA						POLICY DATA			
General (2004)		Trade (2004)		Air transport (2004)		Trade (2006)		Air Transport (2005)	
Population (million)	1.12	Total trade (million US\$)	4,854	WASA traffic (passengers) (2005)	1-500000	Final bound MFN tariffs (%)	19.1	Traffic weighted average ALI (Standard)	14.0
Share in world population (%)	0.02	Share in world trade (%)	0.02	Share of total WASA traffic (%) (2005)	0.00	Services sectors committed (out of ~160)	9	Traffic weighted average ALI (5th+)	19.0
GDP (million current US\$)	2,396	Trade per capita (US\$)	4,335	Number of planes (of which, in parenthesis, jets) (2005)	34 (14)	Tourism and travel-related services sectors committed (out of 3)	1	Traffic weighted average ALI (OWN+)	12.0
Share in world GDP (%)	0.01	Trade to GDP ratio (%)	202.6	Number of international airports (2005)	1	Services auxiliary to all modes of transport committed (out of 4)	0	Traffic weighted average ALI (DES+)	16.5
GDP per capita (current US\$)	2,140	Commercial services trade (million US\$)	1,002	Domestic traffic (passengers) (2005)	...	Air transport services sectors committed (out of 4)	0	Dispersion of ALI (standard)	14-14
Size (km²)	17,200	Share in world commercial services trade (%)	0.02	Air transport services (million US\$)	52	MFN exemptions on air transport services	0	National ownership regime (2004)	...
Density (pop. by km²)	65	Travel services (million US\$)	147	Passenger air transport services (million US\$)	13 (2003)	Number of bilateral FTAs	0	Number of bilateral ASAs recorded by ICAO	1
				Freight air transport services (million US\$)	0	Number of regional FTAs	3	Number of plurilateral ASAs recorded by ICAO (2006)	2

SWAZILAND

Chart 1

Share of traffic by ALI range
(percentage, 2005)

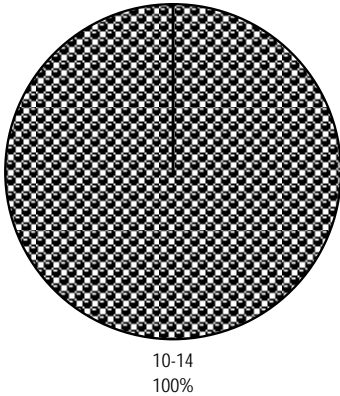


Chart 2

Share of traffic by type
(percentage, 2005)

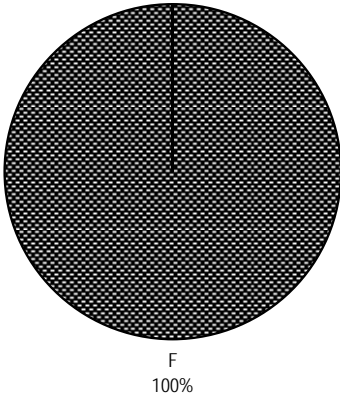
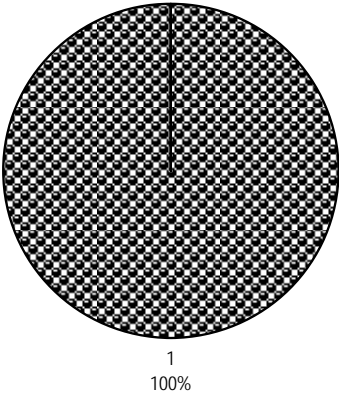


Chart 3

Share of traffic by region of partner
(percentage, 2005)



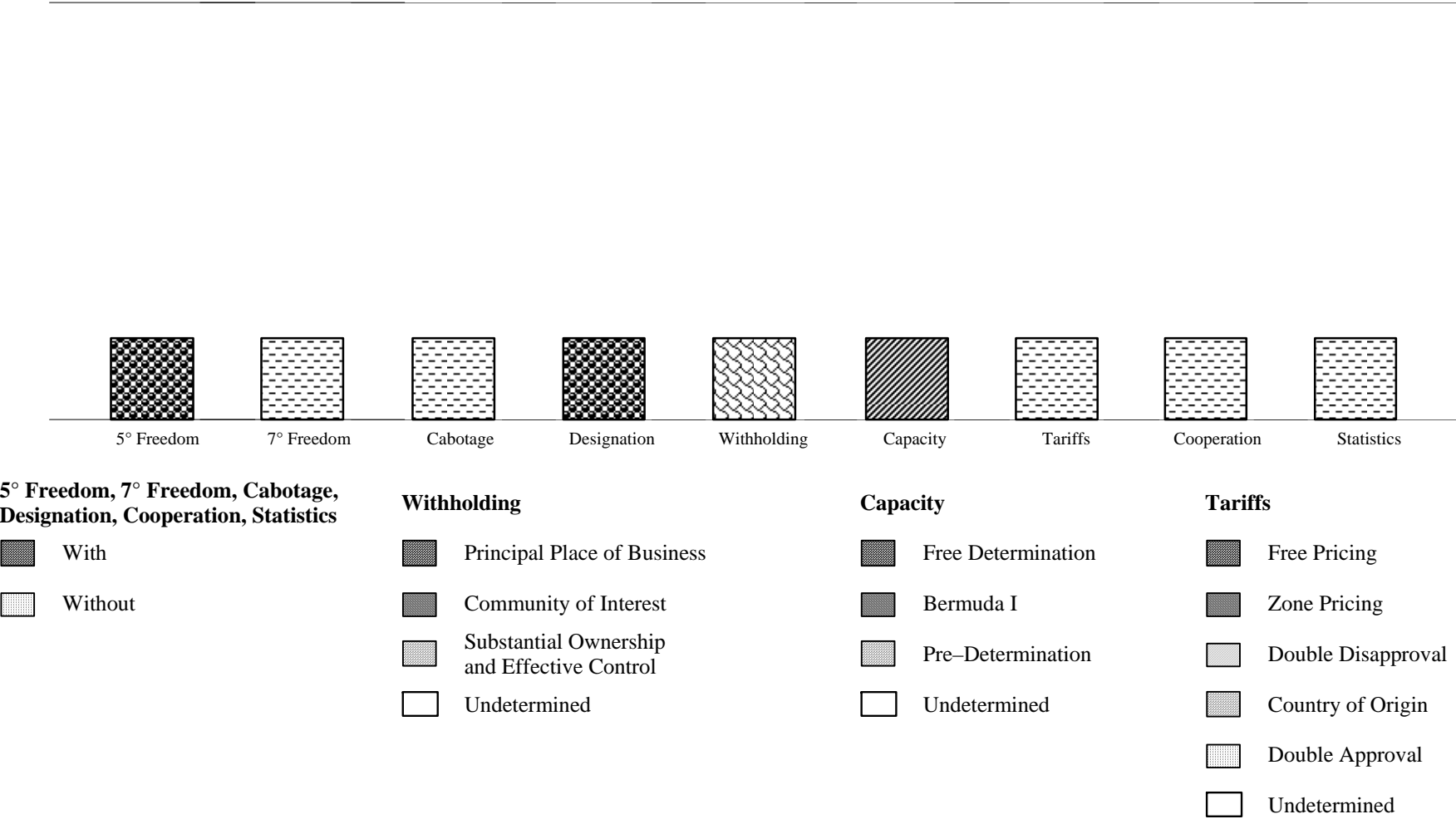
1 Africa; 2 Asia and Oceania;
3 Commonwealth of Independent States;
4 Europe; 5 Middle East; 6 North America;
7 South and Central America and the Caribbean

SWAZILAND

Chart 4

Distribution of traffic by feature of bilateral Air Services Agreements (thousand passengers, 2005)

1000
passengers



SWAZILAND

Table 2

Bilateral Air Services Agreements recorded by ICAO, selected indicators (2005)

Party	Date	Direct Services	ALI Standard	ALI 5th+	ALI OWN+	ALI DES+	Type	Distance (km)	Traffic Range (passengers)
MALAWI	26/07/1973	No	14	19.0	12.0	16.5	F	1405	1-500000

Table 3

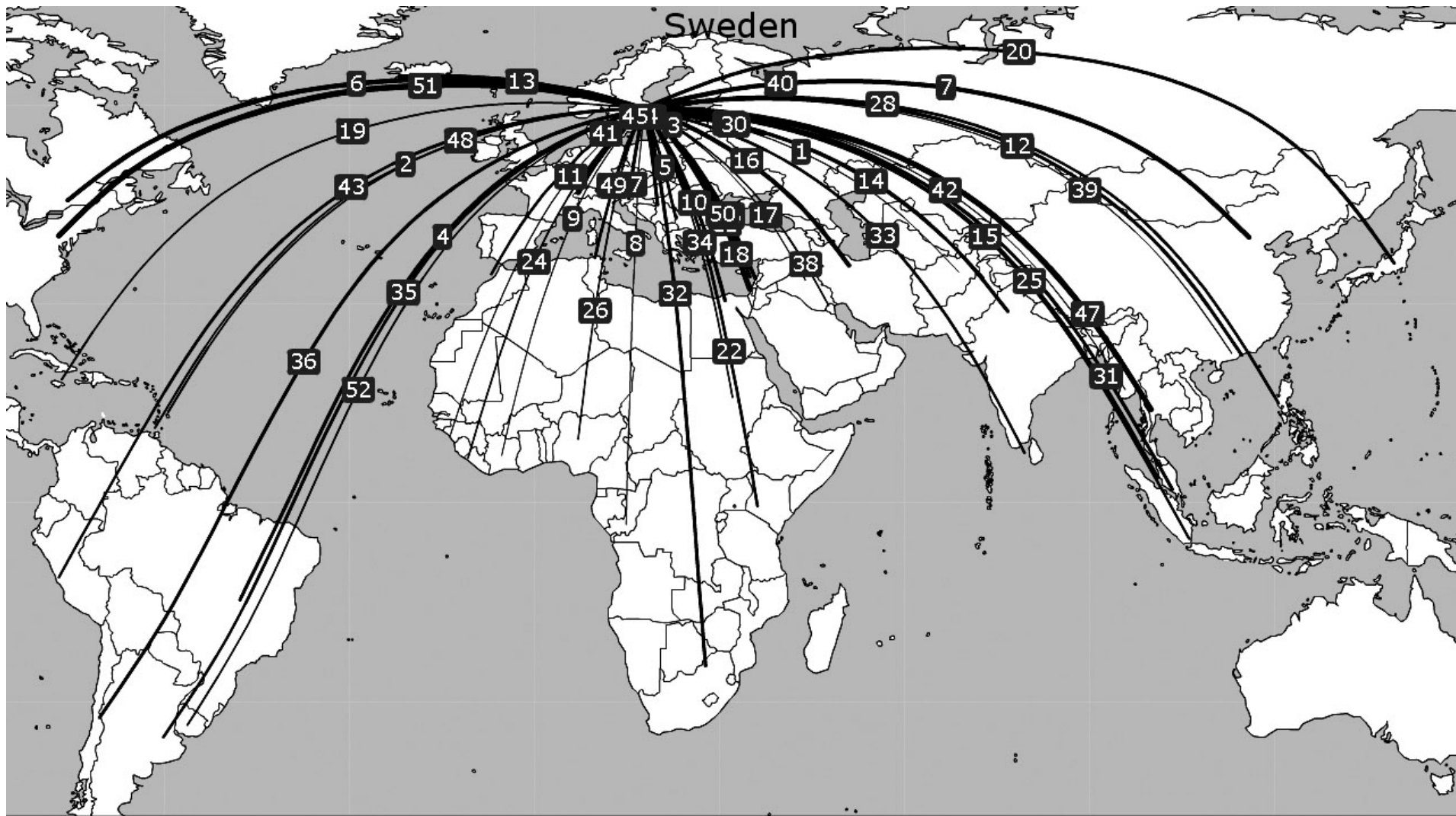
Direct air transportation services (passengers) not covered by a bilateral Air Services Agreement as recorded by ICAO (2005)

Countries or territories	Traffic range
South Africa	1-500000

Countries or territories	Traffic range
Mozambique	1-500000

SWEDEN

SWEDEN



SWEDEN

Table 1
Selected indicators

STATISTICAL DATA						POLICY DATA			
General (2004)		Trade (2004)		Air transport (2004)		Trade (2006)		Air Transport (2005)	
Population (million)	8.99	Total trade (million US\$)	298,241	WASA traffic (passengers) (2005)	2,707,043	Final bound MFN tariffs (%)	4.1	Traffic weighted average ALI (Standard)	9.0
Share in world population (%)	0.14	Share in world trade (%)	1.33	Share of total WASA traffic (%) (2005)	0.39	Services sectors committed (out of ~160)	98	Traffic weighted average ALI (5th+)	12.1
GDP (million current US\$)	346,412	Trade per capita (US\$)	33,167	Number of planes (of which, in parenthesis, jets) (2005)	162 (83)	Tourism and travel-related services sectors committed (out of 3)	3	Traffic weighted average ALI (OWN+)	8.1
Share in world GDP (%)	0.84	Trade to GDP ratio (%)	86.1	Number of international airports (2005)	19	Services auxiliary to all modes of transport committed (out of 4)	0	Traffic weighted average ALI (DES+)	10.4
GDP per capita (current US\$)	38,525	Commercial services trade (million US\$)	71,228	Domestic traffic (passengers) (2005)	1,762,426	Air transport services sectors committed (out of 4)	CRS; Sell/Mark; Maint	Dispersion of ALI (standard)	0-28
Size (km ²)	410,330	Share in world commercial services trade (%)	1.65	Air transport services (million US\$)	3,139	MFN exemptions on air transport services	CRS; Sell/Mark	National ownership regime (2004)	Community of interest ^{1,2}
Density (pop. by km ²)	22	Travel services (million US\$)	16,292	Passenger air transport services (million US\$)	2,177	Number of bilateral FTAs	24 ³	Number of bilateral ASAs recorded by ICAO	52
				Freight air transport services (million US\$)	85	Number of regional FTAs	2 ³	Number of plurilateral ASAs recorded by ICAO (2006)	3

¹ In dealing with airline designation in the future, Sweden is willing to accept criteria other than the traditional ownership and control for itself and its foreign partners.

² The airline has to be established in the territory of Sweden under the Treaty establishing the European Community; has to have received an Operating Licence in accordance with European Community law; effective regulatory control of the airline has to be exercised and maintained by the European Community Member State responsible for issuing its Air Operators Certificate; and the relevant aeronautical authority has to be clearly identified in the designation (Commission Decision of 29 March 2005 on approving the standard clauses for inclusion in bilateral Air Service Agreements between Member States and third countries jointly laid down by the Commission and the Member States.

³ Via EC membership.

SWEDEN

Chart 1
Share of traffic by ALI range
(percentage, 2005)

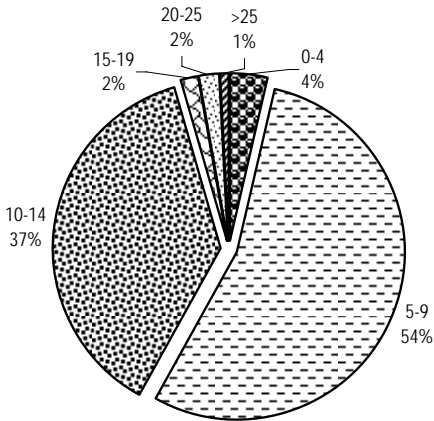


Chart 2
Share of traffic by type
(percentage, 2005)

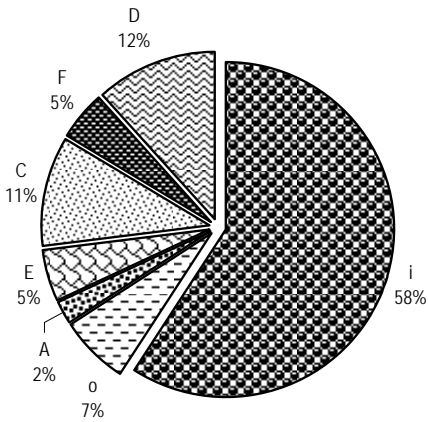
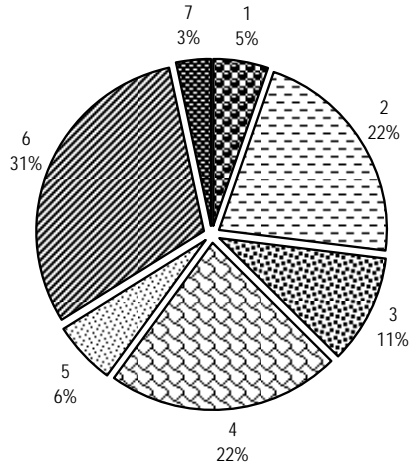


Chart 3
Share of traffic by region of partner
(percentage, 2005)

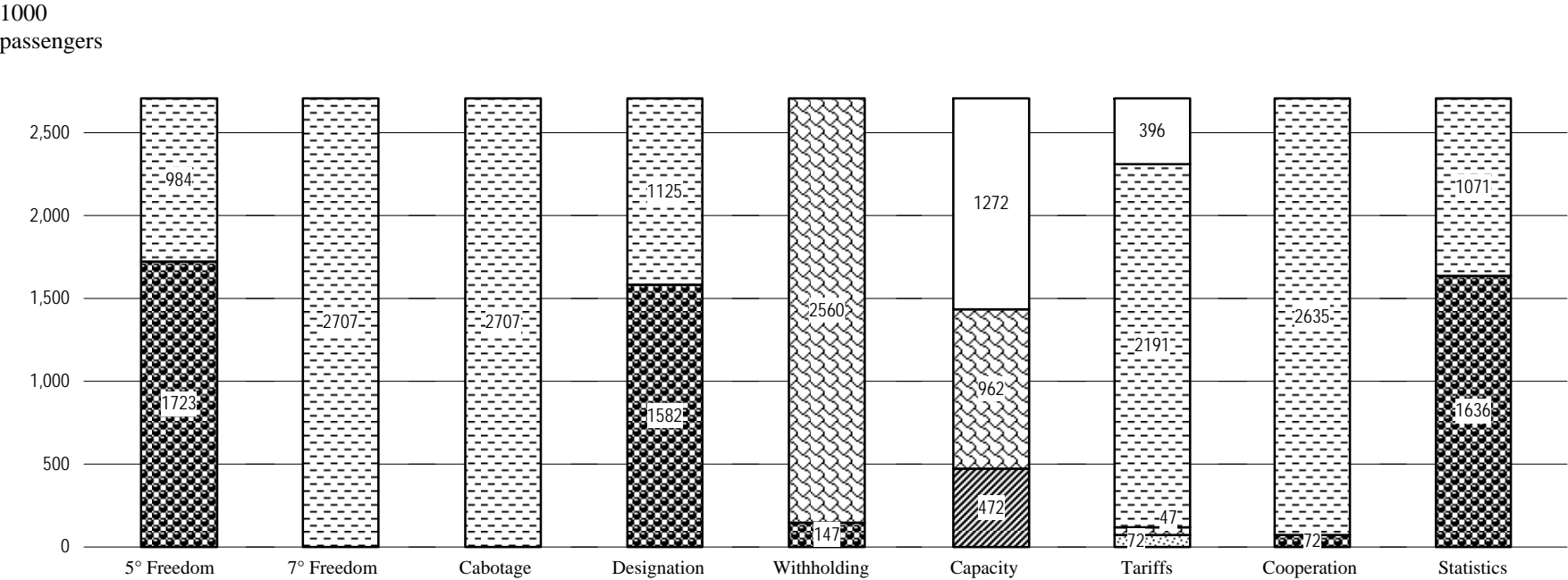


1 Africa; 2 Asia and Oceania;
3 Commonwealth of Independent States;
4 Europe; 5 Middle East; 6 North America;
7 South and Central America and the Caribbean

SWEDEN

Chart 4

Distribution of traffic by feature of bilateral Air Services Agreements (thousand passengers, 2005)



5° Freedom, 7° Freedom, Cabotage,
Designation, Cooperation, Statistics

- With
- Without

Withholding

- Principal Place of Business
- Community of Interest
- Substantial Ownership and Effective Control
- Undetermined

Capacity

- Free Determination
- Bermuda I
- Pre-Determination
- Undetermined

Tariffs

- Free Pricing
- Zone Pricing
- Double Disapproval
- Country of Origin
- Double Approval
- Undetermined

SWEDEN

Table 2
Bilateral Air Services Agreements recorded by ICAO, selected indicators (2005)

Party	Date	Direct Services	ALI Standard	ALI 5th+	ALI OWN+	ALI DES+	Type	Distance (km)	Traffic Range (passengers)
UNITED STATES	16/12/1944	Yes	7	6.0	6.0	10.0	i	6323	500001-1000000
SWITZERLAND	18/10/1950	Yes	11	16.5	9.5	10.0	D	1547	1-500000
RUSSIAN FEDERATION	31/03/1956	Yes	7	13.0	6.0	6.5	i	1232	1-500000
THAILAND	23/11/1949	Yes	12	17.0	10.0	14.5	i	8276	1-500000
TURKEY	13/11/1970	Yes	10	15.5	8.5	13.0	E	2173	1-500000
CHINA	01/06/1973	Yes	6	12.0	5.0	5.5	C	6714	1-500000
CANADA	27/06/1947	No	7	13.0	6.0	6.5	i	6335	1-500000
IRAN, ISLAMIC REP. OF	10/06/1975	Yes	6	12.0	5.0	5.5	C	3566	1-500000
ICELAND	12/05/1960	Yes	11	16.5	9.5	14.0	i	2138	1-500000
PAKISTAN	06/03/1958	Yes	8	13.5	6.5	7.0	i	4891	1-500000
SOUTH AFRICA	11/09/2001	No	21	18.0	25.0	23.0	o	10381	1-500000
SERBIA AND MONTENEGRO	18/04/1958	No	11	16.5	9.5	14.0	i	1622	1-500000
INDIA	19/12/1995	No	0	0.0	0.0	0.0	A	5574	1-500000
JAPAN	20/02/1953	No	14	19.0	12.0	16.5	F	8181	1-500000
BRAZIL	18/03/1969	No	6	12.0	5.0	5.5	C	10936	1-500000
EGYPT	12/12/1949	No	12	17.0	10.0	14.5	i	3407	1-500000
CROATIA	06/03/1996	Yes	15	13.0	20.0	17.5	o	1513	1-500000
SYRIAN ARAB REPUBLIC	09/03/1955	Yes	14	19.0	12.0	16.5	F	3173	1-500000
ISRAEL	09/11/1977	Yes	4	3.5	3.5	3.5	o	3277	1-500000
MALAYSIA	19/10/1967	Yes	14	19.0	12.0	16.5	F	9355	1-500000
HONG KONG, CHINA	14/03/2000	No	12	10.5	17.5	15.0	o	8233	1-500000
SINGAPORE	20/12/1966	No	10	15.5	8.5	9.0	D	9654	1-500000
CHILE	27/06/2001	No	28	31.0	31.0	29.5	o	13104	1-500000
ROMANIA	15/04/1957	No	7	13.0	6.0	6.5	i	1747	1-500000
LEBANON	23/03/1953	No	13	18.0	11.0	15.5	i	3110	1-500000
BULGARIA	17/04/1957	Yes	7	13.0	6.0	6.5	C	1889	1-500000
KENYA	17/05/1979	No	6	12.0	5.0	5.5	C	6943	1-500000
MOROCCO	14/11/1977	No	0	0.0	0.0	0.0	A	3356	1-500000

SWEDEN

Party	Date	Direct Services	ALI Standard	ALI 5th+	ALI OWN+	ALI DES+	Type	Distance (km)	Traffic Range (passengers)
TUNISIA	19/03/1959	Yes	13	18.0	11.0	15.5	i	2567	1-500000
PHILIPPINES	08/05/1969	No	7	13.0	6.0	6.5	C	9333	1-500000
INDONESIA	23/06/1971	No	14	19.0	12.0	16.5	F	10528	1-500000
JORDAN	09/01/1961	No	11	16.5	9.5	14.0	i	3325	1-500000
ARGENTINA	16/06/1988	No	6	12.0	5.0	5.5	C	12585	1-500000
BELARUS	24/11/1995	Yes	15	13.0	20.0	17.5	o	838	1-500000
PERU	14/07/1960	No	9	14.5	7.5	8.0	i	11464	1-500000
SRI LANKA	29/05/1959	No	10	15.5	8.5	13.0	E	7784	1-500000
KUWAIT	24/06/1976	No	6	12.0	5.0	5.5	i	4031	1-500000
NIGERIA	11/03/1977	No	6	12.0	5.0	5.5	C	6016	1-500000
TRINIDAD AND TOBAGO	02/11/1969	No	10	15.5	8.5	13.0	E	8411	1-500000
URUGUAY	18/12/1981	No	6	12.0	5.0	5.5	C	12494	1-500000
BARBADOS	31/10/1969	No	10	15.5	8.5	13.0	E	8069	1-500000
SUDAN	17/02/1958	No	14	19.0	12.0	16.5	F	5015	1-500000
JAMAICA	13/10/1976	No	2	1.5	1.5	1.5	i	8576	1-500000
LIBERIA	09/12/1959	No	11	16.5	9.5	14.0	i	6388	1-500000
CÔTE D'IVOIRE	07/06/1966	No	10	15.5	8.5	13.0	E	6301	1-500000
MONGOLIA	19/06/1997	No	15	13.0	20.0	17.5	o	5543	1-500000
GUINEA	17/06/1961	No	11	16.5	9.5	14.0	i	6225	1-500000
MYANMAR	14/09/1950	No	15	20.0	13.0	17.5	i	7742	1-500000
CONGO	27/02/1967	No	6	12.0	5.0	5.5	C	7079	1-500000
MACAO, CHINA	12/12/1996	No	12	10.5	17.5	15.0	o	8201	1-500000
AFGHANISTAN	24/05/1967	No	15	20.0	13.0	17.5	F	4597	1-500000
IRAQ	02/07/1981	No	10	15.5	8.5	9.0	D	3483	<1

SWEDEN

Table 3

Direct air transportation services (passengers) not covered by a bilateral Air Services Agreement as recorded by ICAO (2005)

Countries or territories	Traffic range
Norway	1-500000
Serbia and Montenegro	1-500000

Countries or territories	Traffic range
Ukraine	1-500000
Ethiopia	1-500000